

LDB5525

Easi - T 5 Lever BS Deadlock
64mm (2.5")

Variations

LDB5530 - 76mm (3")



BS3621



BS EN 12209



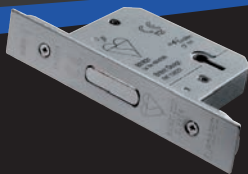
FD3040



PVD



SSS



LSB5525

Easi - T 5 Lever BS Sashlock
64mm (2.5")

Variations

LSB5530 - 76mm (3")



BS3621



BS EN 12209



FD3040



PVD



SSS



EDB5025

**Easi - T Euro Profile BS Cylinder
Deadlock - Complete Set**
64mm (2.5")

Variations

EDB5030 - 76mm (3")



BS3621



BS EN 1303



BS EN 12209



FD3040



PVD



SSS



NOTES:

Radius forend and strike pack available as an accessory. Rebates available as an accessory. LDB and LSB to BS 3621:2007. Florentine bronze accessory packs available for LDB and LSB BS locks. Call sales for details.



PVD 
SSS 



ESB5026

**Easi - T Euro Profile BS Cylinder
Sashlock - Complete Set**
64mm (2.5")

Variations

ESB5030 - 76mm (3")



BS3621



BS EN 1303



BS EN 12209



FD30/60



PVD 
SSS 



EDB5025/CT

**Easi - T Euro Profile BS Cylinder
and Turn Deadlock**
- Complete Set
64mm (2.5")

Variations

EDB5030/CT - 76mm (3")



BS3621



BS EN 1303



BS EN 12209



FD30/60



PVD 
SSS 



EDB5025/CT

**Easi - T Euro Profile BS Cylinder
and Turn Sashlock**
- Complete Set
64mm (2.5")

Variations

ESB5030/CT - 76mm (3")



BS3621



BS EN 1303



BS EN 12209



FD30/60



NOTES:

Radius forend and strike pack available as an accessory. 1/2" and 1" SSS and PVD rebates available as an accessory. Call sales for details.

DLS0060EP

Easi - T Din Euro Profile Deadlock

Dimensions

Backset: 60mm
Lockcase: 85x150mm

Variations

DLS0060EPSSS/R - Radius



DLS0060L

Easi - T Din Latch

Dimensions

Backset: 60mm
Lockcase: 85x150mm

Variations

DLS0060LSSS/R - Radius



DLS7260EP

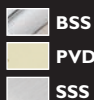
Easi - T Din Euro Profile Sashlock

Dimensions

Backset: 60mm
Lockcase: 85x150mm
Centres: 72mm

Variations

DLS7260EPSSS/R - Radius



NOTES:

1/2 Set fixing plate ALP5038 for B/T furniture available. 100mm Split Spindle with lock back feature ASS5100 available. BSS and PVD versions only available by adding strike plate and forend kit. Call sales for details.



BSS 
PVD 
SSS 

DLS7260NLA

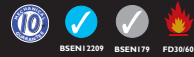
**Easi - T Din Euro Profile
Nightlatch Anti Thrust Snib**

Dimensions

Backset: 60mm
Lockcase: 85x150mm
Centres: 72mm

Variations

DLS7260NLASSS/R - Radius



BSS 
PVD 
SSS 

DLS7860WC

Easi - T Din Bathroom Lock

Dimensions

Backset: 60mm
Lockcase: 85x150mm
Centres: 78mm

Variations

DLS7860WCSSS/R - Radius

DLS7860WC/8/SSS - 8mm Follower

DLS7860WC/8/SSS/R - 8mm Follower Radius



BSS 
PVD 
SSS 

DLS7260ESC

**Easi - T Din Euro Profile
Escape Lock**

Dimensions

Backset: 60mm
Lockcase: 85x150mm
Centres: 72mm

Variations

DLS7260ESCSSS/R - Radius



NOTES:

CE category of use 3 - e.g. public buildings successfully tested to 200,000 cycles with a constant side force of 25N. Radius forend and strike pack available as an accessory. Rebates available as an accessory. Call sales for details.

LDS5325

Easi - T 3 Lever Deadlock
64mm (2.5")

Variations

LDS5330 - 3 Lever 76mm (3")

LDS5525 - 5 Lever 64mm (2.5")

LDS5530 - 5 Lever 76mm (3")



LSS5325

Easi - T 3 Lever Sashlock
64mm (2.5")

Variations

LSS5330 - 3 Lever 76mm (3")

LSS5525 - 5 Lever 64mm (2.5")

LSS5530 - 5 Lever 76mm (3")



RSL5030

**Easi - T Roller Bolt Euro
Profile Deadlock**
76mm (3")



NOTES:

Radius forend and strike pack available as an accessory. Rebates available as an accessory. Call sales for details.



PVD 

SSS 

B

EDS5025

Easi - T Euro Profile Deadlock
64mm (2.5")

Variations

EDS5030 - 76mm (3")



PVD 

SSS 

B

ESS5025

Easi - T Euro Profile Sashlock
64mm (2.5")

Variations

ESS5030 - 76mm (3")



PVD 

SSS 

ODS5025

Easi - T Oval Profile Cylinder Deadlock
64mm (2.5")

Variations

ODS5030 - 76mm (3")



NOTES:

Florentine bronze accessory packs are available for Easi - T locks.
Call sales for details.

OSS5025

**Easi - T Oval Profile Cylinder
Sashlock**
64mm (2.5")

Variations

OSS5030 - 76mm (3")



BAS5025

Easi - T Bathroom Lock
5mm Follower - 64mm (2.5")

Variations

BAS5030 - 5mm Follower 76mm (3")



MCN5025

**Easi - T Euro Profile Cylinder
Night Latch - Case Only**
64mm (2.5")



LCPI000

**Security Cylinder Pull
with Mini Lever**





FLD8025

Flat Deadlock
64mm (2.5")

Variations

FLD8030 - 76mm (3")
FLD8040 - 102mm (4")



FLL8025

Original Flat Latch
64mm (2.5")

Variations

FLL8030 - 76mm (3")
FLL8040 - 102mm (4")



FLL5025

Easi-T Flat Latch
64mm (2.5")

Variations

FLL5030 - 76mm (3")
FLL5040 - 102mm (4")



FLE8030

Mortice Box Latch
76mm (3")

NOTES:

Radius forend and strike pack available as an accessory. Rebates available as an accessory. Call sales for details.

TLD5030

Easi - T Tubular Dead Bolt 5mm Follower - 76mm (3")

Variations

TLD5040 - 5mm Follower 102mm (4")

TLD5050 - 5mm Follower 127mm (5")

TLD5830 - 8mm Follower 76mm (3")

TLD5840 - 8mm Follower 102mm (4")

TLD5850 - 8mm Follower 127mm (5")

EB

SSS

B



BSEN 12209 FD30/60



TLS5030

Easi - T Heavy Sprung Tubular Latch 76mm (3")

Variations

TLS5025 - 8mm Follower 64mm (2.5")

TLS5040 - 8mm Follower 102mm (4")

TLS5050 - 8mm Follower 127mm (5")

BSS

EB

SSS

B



BSEN 12209 FD30/60



TLS8030

Easi - T Heavy Sprung Tubular Latch 8mm Follower - 76mm (3")

EB

NP

SC



BSEN 12209 FD30/60



ULS5025

Easi - T Upright Latch 64mm (2.5")

Variations

ULS5030 - 76mm (3")

PVD

SSS



BSEN 12209 FD30/60



NOTES:

Conversion kit available for TLD5030 - TLD5850.

* TLS5025 is not bolt through.



PVD 
SSS 

URLS5325

**Universal Replacement 3 Lever
Sashlock**
64mm (2.5")

Variations

URLS5330 - 3 Lever 76mm (3")

URLS5525 - 5 Lever 64mm (2.5")

URLS5530 - 5 Lever 76mm (3")



PVD 
SSS 

URES5025

**Universal Replacement Euro
Profile Sashlock**
64mm (2.5")

Variations

URES5030 - 76mm (3")



PVD 
SSS 

UROS5025

**Universal Replacement Oval
Profile Sashlock**
64mm (2.5")

Variations

UROS5030 - 76mm (3")



PVD 
SSS 

URBS5025

**Universal Replacement
Bathroom Sashlock**
64mm (2.5")

Variations

URBS5030 - 76mm (3")

NOTES:

Universal replacement deadlocks also available URLD (Lever Dead), URED (Euro Dead) and UROD (Oval Dead). Call sales for details. Easily replaces 1st fix UK lock profiles.

DLE0055L

Easi - T Contract Din Latch 55mm

Dimensions

Backset: 55mm
Lockcase: 85x150mm

Variations

DLE0055L/R - 55mm Radius



DLE0055EP

Easi - T Contract Din Euro Profile Deadlock 55mm

Dimensions

Backset: 55mm
Lockcase: 85x150mm

Variations

DLE0055EP/R - 55mm Radius



DLE7255EP

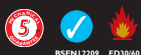
Easi - T Contract Din Euro Profile Sashlock 55mm

Dimensions

Backset: 60mm
Lockcase: 85x150mm
Centres: 72mm

Variations

DLE7255EP/R - 55mm Radius



NOTES:

CE successfully tested to 200,000 cycles with a constant side force of 25N. For use on doors up to 200kg. Rebates available as an accessory. Call sales for details.



PVD 
SSS 

DLE7255NL

**Easi - T Contract Din Euro
Profile Nightlatch**
55mm

Dimensions

Backset: 55mm
Lockcase: 85x150mm
Centres: 72mm

Variations

DLE7255NL/R - 55mm Radius



DLE7855WC

**Easi - T Contract Din
Bathroom Lock**
55mm - 5mm Follower

Dimensions

Backset: 55mm
Lockcase: 85x150mm
Centres: 78mm

Variations

DLE7855WC/R - 55mm Radius
DLE7855WCSSS/8 - With 8mm Follower



PVD 
SSS 

NOTES:

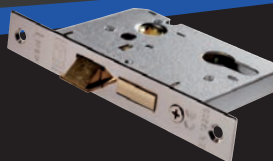
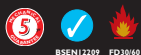
CE category of use 3. For use in public areas where there is little incentive to take care and where there is a high chance of misuse. Rebates available as an accessory. Call sales for details.

ESE5025

**Easi - T Economy Euro
Profile Sashlock**
64mm (2.5")

Variations

ESE5030 - 76mm (3")

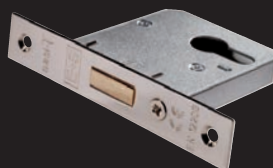


EDE5025

**Easi - T Economy Euro
Profile Deadlock**
64mm (2.5")

Variations

EDE5030 - 76mm (3")

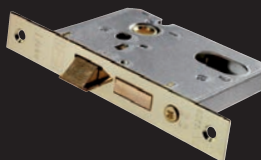
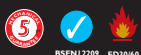


OSE5025

**Easi - T Economy Oval
Profile Sashlock**
64mm (2.5")

Variations

OSE5030 - 76mm (3")





EB



NP



ODE5025

Easi - T Economy Oval Profile Deadlock
64mm (2.5")

Variations

ODE5030 - 76mm (3")



BS EN 12209 FD 30/60



BLACK



EB



NP



B

BAE5025

Easi - T Contract Bathroom Lock
64mm (2.5")

Variations

BAE5025/R - 64mm (2.5") Radius

BAE5030 - 76mm (3")

BAE5030/R - 76mm (3") Radius



BS EN 12209 FD 30/60



EB



NP



ULE5025

Easi - T Contract Upright Latch
64mm (2.5")

Variations

ULE5025/R - 64mm (2.5") Radius

ULE5030 - 76mm (3")

ULE5030/R - 76mm (3") Radius



BS EN 12209 FD 30/60



NOTES:

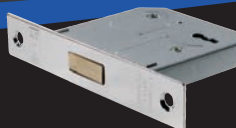
Rebate kits available. Call sales for details.

LDE5325

**Easi - T Contract 3 Lever
Deadlock**
64mm (2.5")

Variations

LDE5330 - 76mm (3")

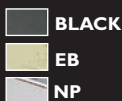


LSE5225

**Easi - T Contract 2 Lever
Sashlock**
64mm (2.5")

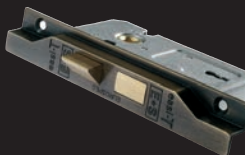
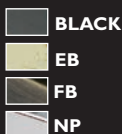
Variations

LSE5225/R - 2 Lever 64mm (2.5") Radius
LSE5230 - 2 Lever 76mm (3")
LSE5230/R - 2 Lever 76mm (3") Radius
LSE5325 - 3 Lever 64mm (2.5")
LSE5325/R - 3 Lever 64mm (2.5") Radius
LSE5330 - 3 Lever 76mm (3")
LSE5330/R - 3 Lever 76mm (3") Radius



LSE5225/REB

**Easi - T Contract 2 Lever
Sashlock Rebated**
64mm (2.5")



NOTES:

Rebate kits available for LSE sash locks. Call sales for details.



JAP 
PB 
PC 
SC 

B

RDE8043

Contract Rim Deadlock
102x76mm (4x3")



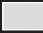


Variations

RLE8043 - Rim Latch
RSE8053 - 140x76mm (5.5x3") Rim Lock
RSE8064 - 152x102mm (6x4") Rim Lock



BSEN12209 FD30/60



BLACK 
EB 
PC 
SC 
WHITE 

B

DSB8225

Contract Door Security Bolt
57mm (2.25")

Variations

WSB8125 - 32mm (1.25") Window Bolt



FD30/60



DSK8000B

Door Security Bolt
Key - 35mm Length

Variations

DSK8000L - 65mm



EB 
NP 

B

TLE5025

Bolt Through Contract Tubular Latch
64mm (2.5")

Variations

TLE5030 - 76mm (3")



FD30/60

NOTES:
TLE5025/30 c/w radius and square face plates.

RCB8260**Contract Rim Cylinder
Rollerbolt**60mm c/w Matching Finish
Cylinder and 3 Keys**Variations****RCB8260L** - 60mm Lockcase Only

FD30/60

**EB****PC****SC****RCN8240****Contract Rim Cylinder
Nightlatch**40mm c/w Matching Finish
Cylinder and 3 Keys**Variations****RCN8240L** - 40mm Lockcase Only

FD30/60

**EB****PC****SC****RCN8260****Contract Rim Cylinder
Nightlatch**60mm c/w Matching Finish
Cylinder and 3 Keys**Variations****RCN8260L** - 60mm Lockcase Only

FD30/60

**EB****PC****SC****NOTES:**

Outward opening striker plate AOS5000 for rim cylinder nightlatch available. RCB8260, RCN8240, RCN8260, RCN8340 and RCN8360 also available in white with EB cylinder.

EB GN **RCN8160****Traditional Rim Cylinder Nightlatch**

60mm c/w PB Rim Cylinder



FD30/60

EB PC SC **RCN8340****Deadlocking Rim Cylinder Nightlatch**

40mm c/w Matching Finish Cylinder and 3 Keys

Variations**RCN8340L** - 40mm Lockcase Only

FD30/60

EB PC SC **RCN8360****Deadlocking Rim Cylinder Nightlatch**

60mm c/w Matching Finish Cylinder and 3 Keys

Variations**RCN8360L** - 60mm Lockcase Only

FD30/60

CYP71141

Patented 15 Pin
Euro Single Cylinder

Dimensions

Length: 41mm

- PB
- PC
- SC



Variations



| Code | Description | Size | Finish |
|----------|----------------------|------|----------|
| CYP71145 | Euro Single Cylinder | 45mm | PB/PC/SC |

CYP71262

Patented 15 Pin
Euro Double Cylinder

Dimensions

Length: 62mm

- PB
- PC
- SC



Variations



| Code | Description | Size | Finish |
|----------|----------------------|------|----------|
| CYP71270 | Euro Double Cylinder | 70mm | PB/PC/SC |
| CYP71282 | Euro Double Cylinder | 82mm | PB/PC/SC |

NOTES:
Also available keyed alike and under master key. Supplied with 2 keys. Patented until 2022. For cylinder queries and orders call the cylinder shop on 01254 274140.



CYP73526

**Patented 15 Pin
Standard Rim Cylinder**

Dimensions

Diameter: 32mm



FD30/60



CYP71362

**Patented 15 Pin
Euro Cylinder and Turn**

Dimensions

Length: 62mm

| Code | Description | Size | Finish |
|----------|------------------------|------|----------|
| CYP71370 | Euro Cylinder and Turn | 70mm | PB/PC/SC |
| CYP71382 | Euro Cylinder and Turn | 82mm | PB/PC/SC |

Variations



BSEN1303



FD30/60



SECURITY CARD INFORMATION

DISTRIBUTOR

This security card is retained by the Distributor and a copy of this card must be produced to Eurospec with any orders for additional keys or cylinders.

The Distributor Card contains either the key number or Master Key System reference number.

OWNER

This security card is retained by the owner of the cylinder or Master Key System and must be produced to the Distributor with any orders for additional keys or cylinders.

The Owner Card contains either the key number or Master Key System reference number in addition to all Distributor details.

Patented until 2022



CYH71142

Architectural Range 10 Pin Euro Single Cylinder

Dimensions

Length: 42mm

| Code | Description | Size | Finish |
|----------|----------------------|------|----------|
| CYH71146 | Euro Single Cylinder | 46mm | PB/PC/SC |
| CYH71150 | Euro Single Cylinder | 50mm | PB/PC/SC |

Variations



CYH71264

Architectural Range 10 Pin Euro Double Cylinder

Dimensions

Length: 64mm

| Code | Description | Size | Finish |
|-----------|----------------------|-------|----------|
| CYH71270 | Euro Double Cylinder | 70mm | PB/PC/SC |
| CYH71280 | Euro Double Cylinder | 80mm | PB/PC/SC |
| CYH71290 | Euro Double Cylinder | 90mm | PB/PC/SC |
| CYH712100 | Euro Double Cylinder | 100mm | PB/PC/SC |

Variations



NOTES:

Also available keyed alike and under master key from stock.
Supplied with 3 keys. For cylinder queries and orders call the
cylinder shop on 01254 274140.

CYH7123240

Architectural Range 10 Pin Euro Double Offset Cylinder

Dimensions

Offset: 32/40mm

Variations



| Code | Description | Size | Finish |
|------------|-----------------------------|---------|----------|
| CYH7123240 | Euro Double Offset Cylinder | 32/40mm | PB/PC/SC |
| CYH7123250 | Euro Double Offset Cylinder | 32/50mm | PB/PC/SC |
| CYH7123540 | Euro Double Offset Cylinder | 35/40mm | PB/PC/SC |
| CYH7123545 | Euro Double Offset Cylinder | 35/45mm | PB/PC/SC |
| CYH7123550 | Euro Double Offset Cylinder | 35/50mm | PB/PC/SC |
| CYH7124045 | Euro Double Offset Cylinder | 40/45mm | PB/PC/SC |
| CYH7124050 | Euro Double Offset Cylinder | 40/50mm | PB/PC/SC |
| CYH7124550 | Euro Double Offset Cylinder | 45/50mm | PB/PC/SC |
| CYH7124555 | Euro Double Offset Cylinder | 45/55mm | PB/PC/SC |
| CYH7124060 | Euro Double Offset Cylinder | 40/60mm | PB/PC/SC |

CYH71364

Architectural Range 10 Pin Euro Cylinder and Turn

Dimensions

Length: 64mm

Variations



| Code | Description | Size | Finish |
|-----------|------------------------|-------|----------|
| CYH71370 | Euro Cylinder and Turn | 70mm | PB/PC/SC |
| CYH71380 | Euro Cylinder and Turn | 80mm | PB/PC/SC |
| CYH71390 | Euro Cylinder and Turn | 90mm | PB/PC/SC |
| CYH713100 | Euro Cylinder and Turn | 100mm | PB/PC/SC |

NOTES:

Also available keyed alike and under master key from stock.
Supplied with 3 keys. For cylinder queries and orders call the cylinder shop on 01254 274140.



PB 

PC 

SC 



| Code | Description | Size | Finish |
|------------|-------------------------------|---------|----------|
| CYH7133240 | Euro Offset Cylinder and Turn | 32/40mm | PB/PC/SC |
| CYH7133545 | Euro Offset Cylinder and Turn | 35/45mm | PB/PC/SC |
| CYH7134032 | Euro Offset Cylinder and Turn | 40/32mm | PB/PC/SC |
| CYH7134050 | Euro Offset Cylinder and Turn | 40/50mm | PB/PC/SC |
| CYH7134060 | Euro Offset Cylinder and Turn | 40/60mm | PB/PC/SC |
| CYH7134535 | Euro Offset Cylinder and Turn | 45/35mm | PB/PC/SC |
| CYH7134550 | Euro Offset Cylinder and Turn | 45/50mm | PB/PC/SC |
| CYH7135040 | Euro Offset Cylinder and Turn | 50/40mm | PB/PC/SC |
| CYH7135045 | Euro Offset Cylinder and Turn | 50/45mm | PB/PC/SC |
| CYH7136040 | Euro Offset Cylinder and Turn | 60/40mm | PB/PC/SC |



PB 

PC 

SC 



| Code | Description | Size | Finish |
|----------|-------------------------|------|----------|
| CYH72146 | UK Oval Single Cylinder | 46mm | PB/PC/SC |

CYH7133240

Architectural Range 10 Pin Euro Offset Cylinder and Turn

Dimensions

Offset: 32/40mm

Variations



BSEN1303 FD30/60

CYH72142

Architectural Range 10 Pin UK Oval Single Cylinder

Dimensions

Length: 42mm

Variations



BSEN1303 FD30/60

CYH72264

Architectural Range 10 Pin UK Oval Double Cylinder

Dimensions

Length: 64mm



Variations



| Code | Description | Size | Finish |
|----------|----------------------|------|----------|
| CYH72270 | Oval Double Cylinder | 70mm | PB/PC/SC |
| CYH72280 | Oval Double Cylinder | 80mm | PB/PC/SC |

CYH72364

Architectural Range 10 Pin UK Oval Cylinder and Turn

Dimensions

Length: 64mm



Variations



| Code | Description | Size | Finish |
|----------|------------------------|------|----------|
| CYH72370 | Oval Cylinder and Turn | 70mm | PB/PC/SC |
| CYH72380 | Oval Cylinder and Turn | 80mm | PB/PC/SC |

NOTES:

Also available keyed alike and under master key from stock.
Supplied with 3 keys. For cylinder queries and orders call the
cylinder shop on 01254 274140.



PB 
PC 
SC 

CYH73525

Architectural Range 10 Pin Universal Rim Cylinder

Dimensions

Diameter: 45mm

Suitable for all major branded rim
nightlatches and easily converts to suit
29mm diameter screw-in mortice locks.



FD30/60



PB 
SC 

CYH72-SP3 I

Architectural Range 10 Pin Scandinavian Oval Cylinder

Dimensions

Outer/Inner Set: 31mm

| Code | Description | Size | Finish |
|-------------|----------------------------|---------------|----------|
| CYH72-S03 I | Scandinavian Oval Cylinder | 31mm Outer | PB/PC/SC |
| CYH72-SI3 I | Scandinavian Oval Cylinder | 31mm Inner | PB/PC/SC |

Variations



FD30/60

CYG71364CR

Classroom Euro Cylinder and Turn

Dimensions

Length: 64mm

Variations



BS EN 1303



FD 30/60



PB



PC



SC



| Code | Description | Size | Finish |
|------------|------------------------|------|----------|
| CYG71370CR | Euro Cylinder and Turn | 70mm | PB/PC/SC |
| CYG71380CR | Euro Cylinder and Turn | 80mm | PB/PC/SC |

CYH7PLO47

Open Shackle Padlock

Dimensions

Width: 47mm



FD 30/60



SC



CYH7PLC55

Closed Shackle Padlock

Dimensions

Width: 55mm



FD 30/60



SC



NOTES:

Also available keyed alike and under master key from stock.
 Supplied with 3 keys. For cylinder queries and orders call the
 cylinder shop on 01254 274140.



SECURITY CARD INFORMATION

DISTRIBUTOR

This security card is retained by the Distributor and a copy of this card must be produced to Eurospec with any orders for additional keys or cylinders.

The Distributor Card contains the Master Key System reference number.

OWNER

This security card is retained by the owner of the cylinder or Master Key System and must be produced to the Distributor with any orders for additional keys or cylinders.

The Owner Card contains either the key number or Master Key System reference number in addition to all Distributor details.

CYA71260

**Architectural Range 5 Pin
Euro Double Cylinder**

Dimensions

Length: 60mm



PB



PC



SC



Variations



FD3060

| Code | Description | Size | Finish |
|------------|-----------------------------|---------|----------|
| CYA71270 | Euro Double Cylinder | 70mm | PB/PC/SC |
| CYA71280 | Euro Double Cylinder | 80mm | PB/PC/SC |
| CYA71290 | Euro Double Cylinder | 90mm | PB/PC/SC |
| CYA712100 | Euro Double Cylinder | 100mm | PB/PC/SC |
| CYA712110 | Euro Double Cylinder | 110mm | PB/PC/SC |
| CYA7123040 | Offset Euro Double Cylinder | 30/40mm | PB/PC/SC |
| CYA7123050 | Offset Euro Double Cylinder | 30/50mm | PB/PC/SC |
| CYA7123540 | Offset Euro Double Cylinder | 35/40mm | PB/PC/SC |
| CYA7123545 | Offset Euro Double Cylinder | 35/45mm | PB/PC/SC |
| CYA7123550 | Offset Euro Double Cylinder | 35/50mm | PB/PC/SC |
| CYA7124050 | Offset Euro Double Cylinder | 40/50mm | PB/PC/SC |
| CYA7124060 | Offset Euro Double Cylinder | 40/60mm | PB/PC/SC |
| CYA7124550 | Offset Euro Double Cylinder | 45/50mm | PB/PC/SC |



PB 
PC 
SC 

CYA71140

**Architectural Range
5 Pin Euro Single Cylinder**

Dimensions

Length: 40mm

| Code | Description | Size | Finish |
|----------|----------------------|------|----------|
| CYA71145 | Euro Single Cylinder | 45mm | PB/PC/SC |
| CYA71150 | Euro Single Cylinder | 50mm | PB/PC/SC |

Variations

FD30/60



PB 
PC 
SC 

CYA71370/73520

**Architectural Range 5 Pin
Rim Cylinder and Euro
Cylinder/Turn Set**

Dimensions

Cylinder: 70mm
Rim Cylinder Dia: 45mm



FD30/60



PB 
PC 
SC 

CYA71370/2

**Architectural Range 5 Pin
Rim Cylinder and Euro
Cylinder/Turn (Pair)**

Dimensions

Length: 70mm

NOTES:

CYA71140-50 Available keyed alike and under master key.
Supplied with 3 keys. CYA71370 supplied with 6 keys. For cylinder
queries and orders call the cylinder shop on 01254 274140.

CYA71360

Architectural Range 5 Pin Euro Cylinder and Turn

Dimensions

Length: 60mm



PB



PC



SC



Variations



FD30/40

| Code | Description | Size | Finish |
|------------|-------------------------------|---------|----------|
| CYA71370 | Euro Cylinder and Turn | 70mm | PB/PC/SC |
| CYA71380 | Euro Cylinder and Turn | 80mm | PB/PC/SC |
| CYA71390 | Euro Cylinder and Turn | 90mm | PB/PC/SC |
| CYA713100 | Euro Cylinder and Turn | 100mm | PB/PC/SC |
| CYA7133040 | Offset Euro Cylinder and Turn | 30/40mm | PB/PC/SC |
| CYA7134030 | Offset Euro Cylinder and Turn | 40/30mm | PB/PC/SC |
| CYA7133545 | Offset Euro Cylinder and Turn | 35/45mm | PB/PC/SC |
| CYA7134535 | Offset Euro Cylinder and Turn | 45/35mm | PB/PC/SC |
| CYA7134060 | Offset Euro Cylinder and Turn | 40/60mm | PB/PC/SC |
| CYA7136040 | Offset Euro Cylinder and Turn | 60/40mm | PB/PC/SC |

NOTES:

Also available keyed alike and under master key. Supplied with 3 keys. For cylinder queries and orders call the cylinder shop on 01254 274140.



PB 
PC 
SC 

CYA72140**Architectural Range 5 Pin
Oval Single Cylinder****Dimensions**

Length: 40mm

| Code | Description | Size | Finish |
|----------|----------------------|------|----------|
| CYA72145 | Oval Single Cylinder | 45mm | PB/PC/SC |
| CYA72150 | Oval Single Cylinder | 50mm | PB/PC/SC |

Variations

PB 
PC 
SC 

CYA72260**Architectural Range 5 Pin
Oval Double Cylinder****Dimensions**

Length: 60mm

| Code | Description | Size | Finish |
|----------|----------------------|------|----------|
| CYA72270 | Oval Double Cylinder | 70mm | PB/PC/SC |
| CYA72280 | Oval Double Cylinder | 80mm | PB/PC/SC |

Variations

CYA72360

Architectural Range 5 Pin Oval Cylinder and Turn

Dimensions

Length: 62mm



PB



PC



SC



Variations



FD30/60

| Code | Description | Size | Finish |
|----------|------------------------|------|----------|
| CYA72370 | Oval Cylinder and Turn | 70mm | PB/PC/SC |
| CYA72380 | Oval Cylinder and Turn | 82mm | PB/PC/SC |

CYA73620

Architectural Range 5 Pin Threaded Rim Cylinder

Dimensions

Diameter: 34mm



PB



PC



SC



Variations

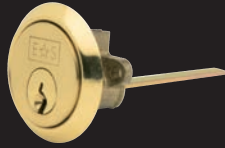


FD30/60

| Code | Description | Size | Finish |
|------------|------------------------------|-----------|----------|
| CYA73620/2 | Threaded Rim Cylinder - Pair | 34mm dia. | PB/PC/SC |

NOTES:

Also available keyed alike and under master key. Supplied with 3 keys. For cylinder queries and orders call the cylinder shop on 01254 274140.



CYA73520

Architectural Range 5 Pin Standard Rim Cylinder

Dimensions

Diameter: 45mm



FD3060

Accessories



| Code | Description | Size | Finish |
|----------|------------------------------|------|----------|
| CYA70445 | Euro Single Thumbturn | 45mm | PB/PC/SC |
| CYA70470 | Euro Bathroom Cylinder | 70mm | PB/PC/SC |
| CYZ70007 | Large Thumbturn | 35mm | PB/PC/SC |
| CYZ70008 | Round Thumbturn | | PB/PC/SC |
| CYZ70009 | Large Thumbturn with Grip | | PB/PC/SC |
| CYZ70011 | Tall Semi-Circular Thumbturn | | PB/PC/SC |
| CYZ70012 | Peanut Shaped Thumbturn | | PB/PC/SC |
| CYZ70016 | Shaped Disabled Thumbturn | | PB/PC/SC |
| CYZ73607 | Cylinder Ring | 7mm | PB/PC/SC |
| CYZ73610 | Cylinder Ring | 10mm | PB/PC/SC |
| CYZ70004 | Screws for Profile Cylinders | 65mm | EB/NP |
| CYZ70040 | Screws for Rim Cylinders | N/A | N/A |
| CYZ70060 | Tail for Rim Cylinders | 55mm | N/A |
| CYZ70002 | Key Rings | 19mm | NP |
| CYZ70003 | Key Tags | 25mm | N/A |

CYE71260

**Contract Range 5 Pin
Euro Double Cylinder**

Dimensions

Length: 60mm



NP



SB



Variations



FD3040

| Code | Description | Size | Finish |
|------------|-----------------------------|-------|--------|
| CYE71270 | Euro Double Cylinder | 70mm | NP/SB |
| CYE71280 | Euro Double Cylinder | 80mm | NP/SB |
| CYE71290 | Euro Double Cylinder | 90mm | NP/SB |
| CYE7123040 | Offset Euro Double Cylinder | 70mm | NP/SB |
| CYE7123050 | Offset Euro Double Cylinder | 80mm | NP/SB |
| CYE7123540 | Offset Euro Double Cylinder | 75mm | NP/SB |
| CYE7123545 | Offset Euro Double Cylinder | 80mm | NP/SB |
| CYE7123550 | Offset Euro Double Cylinder | 85mm | NP/SB |
| CYE7124050 | Offset Euro Double Cylinder | 90mm | NP/SB |
| CYE7124060 | Offset Euro Double Cylinder | 100mm | NP/SB |
| CYE7124550 | Offset Euro Double Cylinder | 95mm | NP/SB |



NP 
SB 

CYE71145

Contract Range 5 Pin Euro Single Cylinder

Dimensions

Length: 45mm

| Code | Description | Size | Finish |
|----------|----------------------|------|--------|
| CYE71140 | Euro Single Cylinder | 40mm | NP/SB |

Variations



NP 
SB 


CYE71360

Contract Range 5 Pin Euro Cylinder and Turn

Dimensions

Length: 60mm

| Code | Description | Size | Finish |
|----------|------------------------|------|--------|
| CYE71370 | Euro Cylinder and Turn | 70mm | NP/SB |
| CYE71380 | Euro Cylinder and Turn | 80mm | NP/SB |
| CYE71390 | Euro Cylinder and Turn | 90mm | NP/SB |

Variations



CYE72140

**Contract Range 5 Pin
Oval Single Cylinder**

Dimensions

Length: 40mm



Variations



| Code | Description | Size | Finish |
|----------|----------------------|------|--------|
| CYE72145 | Oval Single Cylinder | 45mm | NP/SB |

CYE72260

**Contract Range 5 Pin
Oval Double Cylinder**

Dimensions

Length: 60mm



Variations



| Code | Description | Size | Finish |
|----------|----------------------|------|--------|
| CYE72270 | Oval Double Cylinder | 70mm | NP/SB |



NP 
SB 

CYE72360

**Contract Range 5 Pin
Oval Cylinder and Turn**

Dimensions

Length: 60mm

| Code | Description | Size | Finish |
|----------|------------------------|------|--------|
| CYE72370 | Oval Cylinder and Turn | 70mm | NP/SB |

Variations



NP 
SB 

B

CYE73520

**Contract Range 5 Pin
Standard Rim Cylinder**

Dimensions

Diameter: 45mm



CYC71260

Contract Range 5 Pin Euro Double Cylinder

Dimensions

Length: 60mm



Variations



| Code | Description | Size | Finish |
|----------|----------------------|------|--------|
| CYC71270 | Euro Double Cylinder | 70mm | EB/NP |
| CYC71280 | Euro Double Cylinder | 80mm | EB/NP |

CYC71360

Contract Range 5 Pin Euro Cylinder and Turn

Dimensions

Length: 60mm



Variations



| Code | Description | Size | Finish |
|----------|------------------------|------|--------|
| CYC71370 | Euro Cylinder and Turn | 70mm | EB/NP |
| CYC71380 | Euro Cylinder and Turn | 80mm | EB/NP |



In addition to our stocked range of cylinders we are also one of the leading providers of masterkey cylinder locks in the UK.

Our previous systems include hospitals, sports stadiums, schools, universities, shopping centres, offices and even palaces. Masterkey systems are available in 5, 10 and 15 Pin:

15 Pin Offers

**MP
15**

Patented no unauthorised duplication key
65,000 key differs
Pins in 3 axis for security
Tested to BS EN 1303
C/W security card
Secured by Design accredited



10 Pin Offers

**MP
10**

10,000 key differs
Restricted key section
Extensive masterkey options
All keys stamped for ease of re-ordering
C/W security card
Secured by Design accredited



5 Pin Offers

**MP
5**

Entry level
10,000 key differs
Our widest range of sizes and finishes
Wide range of masterkey options at very competitive prices

We offer a comprehensive service from cutting spare keys to producing complex lock charts for customer sign off. Our experienced cylinder team will be happy to discuss your individual requirements. Please call us on 01254 274140 or fax us on 01254 274113.