

GEZE TS 1500 / TS 2000 / TS SYSTEM 4000
OVERHEAD DOOR CLOSERS WITH LINK ARM



CONTENTS

Overview table GEZE System TS 4000/TS 2000	4
Technics - GEZE Overhead door closer TS 4000 / TS 2000	6
General product functions and information	7
Overhead door closers for single-leaf doors	
GEZE TS 1000 C	8
GEZE TS 1500	11
GEZE TS 2000 NV	15
GEZE TS 2000 V	20
GEZE TS 4000 size 1-6	24
GEZE TS 4000 size 5-7	30
GEZE TS 4000 E	35
GEZE TS 4000 R	40
Overhead door closers with freeswing function	
GEZE TS 4000 EFS	44
GEZE TS 4000 RFS	49
Overhead door closer systems for double-leaf doors	
GEZE TS 4000 IS	53
GEZE TS 4000 E-IS	58
GEZE TS 4000 R-IS	64
Overhead door closer for single-leaf doors and gates	
GEZE TS 4000 Tandem	68
General product information	
Cover caps for GEZE door closers	72
Product information for door closers	73

Overview table for GEZE system TS 2000 / TS 4000

For single-leaf doors

	TS 1000 C	TS 1500	TS 2000 NV	TS 2000 V	TS 4000 size 1-6	TS 4000 size 5-7	TS 4000 E	TS 4000 R	TS 4000 EFS	TS 4000 RFS	TS 4000 Tandem
Approval for fire and smoke-proof doors			•		•	•	•	•	•	•	•
Barrier-free accessibility in accordance with DIN 18040 up to leaf width (max.) in mm	EN3 950	EN4 1100	EN4 1100	EN4 1100	EN4 1100		FSA	FSA	FSA FL	FSA FL	
Closing force acc. to EN 1154	2/3	3/4	2/4	2/4/5	1-6	5-7	1-6	1-6	1-6	1-6	> 7
Door leaf width (max.) in mm	950	1100	1100	1250	1400	1600	1400	1400	1400	1400	>1600
Application possibilities											
Door leaf mounted, hinge side	•	•	•	•	•	•	•		•		•
Frame mounted, hinge side							• ⁶⁾	• ⁶⁾		• ⁶⁾	
Opening angle (max.) hinge side ⁸⁾	180°	180°	180°	180°	180°	180°	180°	180°	180°	180°	180°
Door leaf mounted, opposite hinge side			• ⁷⁾	• ⁷⁾	• ⁷⁾	• ⁷⁾					• ⁷⁾
Frame mounted, opposite hinge side	•	•	•	•	•	•	•	•	•	•	•
Functions											
Closing force, adjustable	•	•	•	•	•	•	•	•	•	•	•
Back check, adjustable			• ²⁾	• ²⁾	•	•					•
Hydraulic latching action	•	•	•	•	•	•	•	•	•	•	•
Delayed closing, adjustable					• ¹⁾						
Closing speed, adjustable	•	•	•	•	•	•	•	•	•	•	•
Mechanical hold-open ³⁾	•	•	•	•	•	• ⁴⁾					
Electric hold-open							•	•			
Electric locking for freeswing									•	•	
Smoke switch control unit, integrated								•		•	
Closing sequence control, integrated											

• = yes

¹⁾ Model TS 4000 S with delayed closing action²⁾ Model TS 2000 NV BC/TS 2000 V BC³⁾ Not for F and RD doors⁴⁾ Hold-open linkage only effective up to EN6⁵⁾ System solution comprising a TS 4000 IS/ E-IS/ R-IS on the active leaf in combination with a TS 4000 /E / R-IS second unit on the fixed leaf and release mechanism in the frame⁶⁾ Only with guide rail, closing force EN3, no DIBt approval⁷⁾ In parallel arm mounting⁸⁾ Opening angle (max.) opposite hinge side, see chapter: Further information for overhead door closers

FSA = Hold-open system

FSA FL = Freeswing locking system

For double-leaf doors

	TS 4000 IS ⁵⁾	TS 4000 E-IS ⁵⁾	TS 4000 R-IS ⁵⁾
Approval for fire and smoke-proof doors	•	•	•
Barrier-free accessibility in accordance with DIN 18040 up to leaf width (max.) in mm	EN4 1100	FSA	FSA
Closing force acc. to EN 1154	1-6	1-6	1-6
Door leaf width (max.) in mm	1400	1400	1400

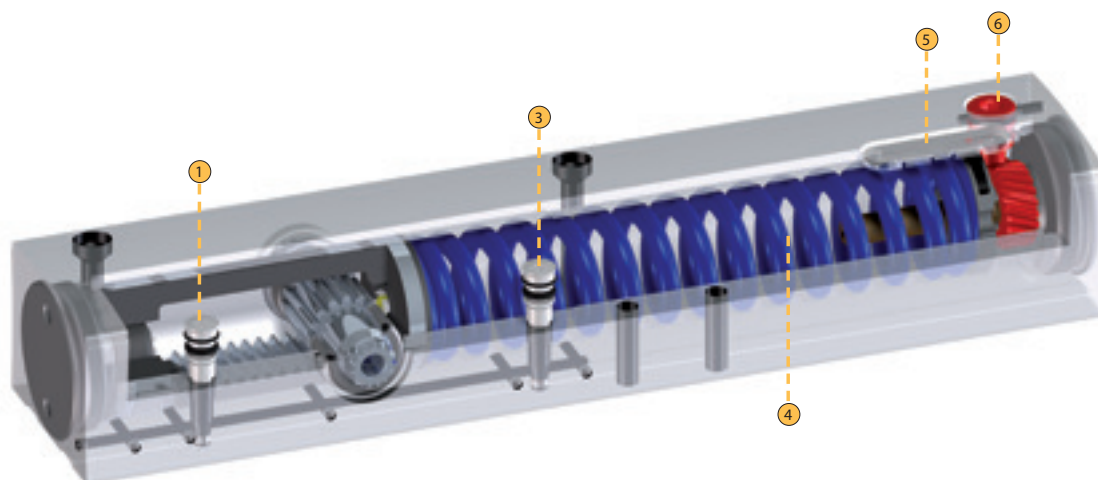
Application possibilities

Door leaf mounted, hinge side	•	•	
Frame mounted, hinge side			
Opening angle (max.) hinge side ⁸⁾	180°	180°	8)
Door leaf mounted, opposite hinge side			
Frame mounted, opposite hinge side	•	•	•

Functions

Closing force, adjustable	•	•	•
Back check, adjustable			
Hydraulic latching action	•	•	•
Delayed closing, adjustable			
Closing speed, adjustable	•	•	•
Mechanical hold-open ³⁾	•		
Electric hold-open		•	•
Electric locking for freeswing			
Smoke switch control unit, integrated			•
Closing sequence control, integrated	•	•	•

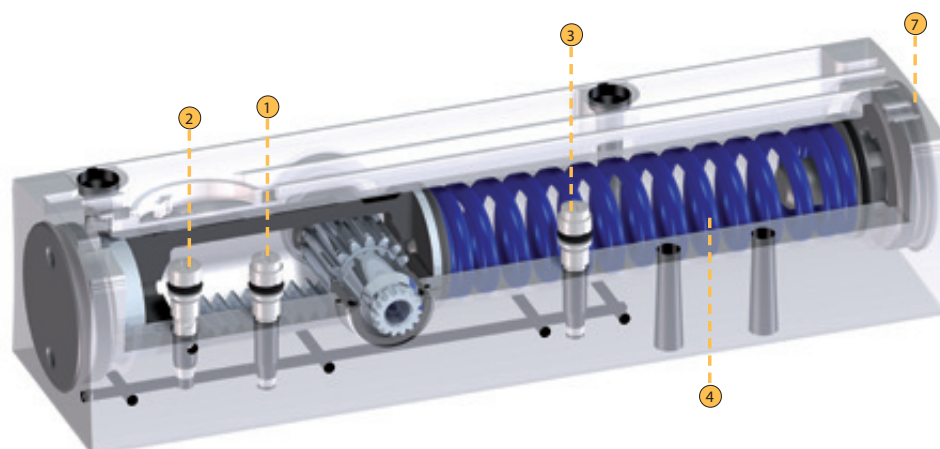
Technics - GEZE Overhead door closer TS 4000



Legende

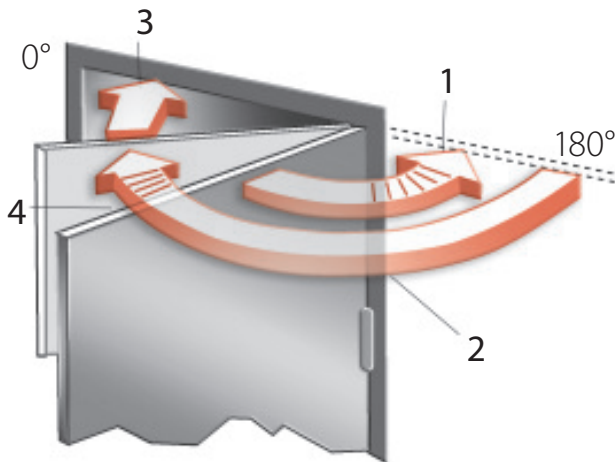
- ① Adjustment closing speed
- ② Adjustment latching action
- ③ Adjustment back check
- ④ Spring package
- ⑤ Display closing force
- ⑥ Adjustment closing force in front
- ⑦ Adjustment closing force on the side

Technics - GEZE Overhead door closer TS 2000 NV BC



General product functions and information

GEZE door closers with link arm



1) Back check

When doors are pushed open forcefully by approximately 90°, this function is activated in order to slow them down. However, it must not be used as a substitute for separate measures designed to limit the opening angle (such as a door stopper or other structural method), e.g. in the case of doors that open outwards or are liable to blow in the wind.

2) Closing speed

The speed at which a door closes can be set on an individual basis.

3) Latching action

When the door is just a few degrees away from reaching the closed position, this function increases the door speed in order to overcome any closing resistance (e.g. in the form of air resistance).

4) Delayed closing action

This function reduces the closing speed of a door or stops the door so that people have enough time to get through it.

GEZE door closers with adjustable closing force:

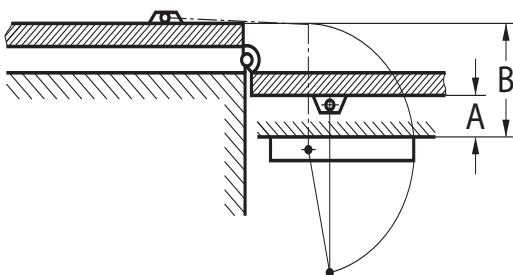
The relevant standards stipulate that the door closer size (closing force of the closer) must be selected in accordance with the door leaf width.

Where necessitated by the structural (door height, door weight) or local conditions (wind), the next size up must be set.

The GEZE TS 4000, TS 2000 and related versions offer several door closer sizes in one housing. The desired size can be selected by means of an adjustment screw or by altering the mounting position. The TS 4000 features an indicator so you can see which size is currently selected.

Door closing force acc. to EN standard	Door leaf width (mm)
Size 1	up to 750
Size 2	over 751 up to 850
Size 3	over 851 up to 950
Size 4	over 951 up to 1100
Size 5	over 1101 up to 1250
Size 6	over 1251 up to 1400
Size 7	over 1401 up to 1600

Specially designed for mounting on opposite hinge side



Dimension A = soffit depth

Dimension B = soffit depth + 2 door thickness
+ 2 pivot point distance

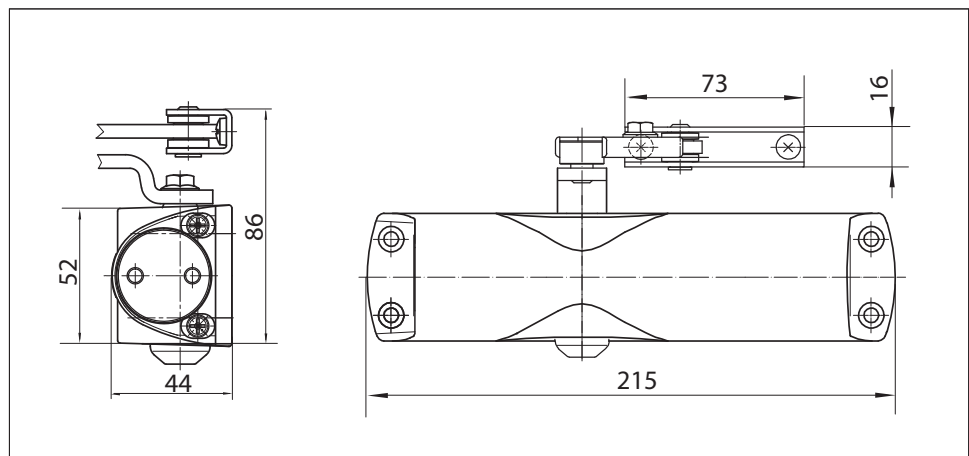
If a door is to be opened 180°,
dimension A = 70 mm and
dimension B = 200 mm
must not be exceeded.

GEZE TS 1000 C**Link arm door closer for single-leaf doors with a leaf width up to 950 mm**

The overhead door closer is suitable for single-leaf doors with a leaf width up to 950 mm. The closing speed and hydraulic latching action can be adjusted. There are two different closing force settings, which can be selected simply by turning the bearing block for the link arm: 'Weak' closing force (size 2 acc. to EN 1154) for door leaf widths up to 850 mm and "strong" closing force (size 3 acc. to EN 1154) for door leaf widths up to 950 mm. The door closer is available with an optional mounting plate. This makes it suitable for left and right single-action doors without the need for conversion.

Special version:

- GEZE TS 1000 C with hold-open linkage featuring adjustable hold-open angle of between 70° and 150°

GEZE TS 1000 C**Application range**

- For internal doors
- For single-action doors, leaf width up to 950 mm
- Compatible with left-hand and right-hand doors without the need for conversion
- Standard mounting on door leaf, hinge side; transom mounting on opposite hinge side also possible

Closer specifications

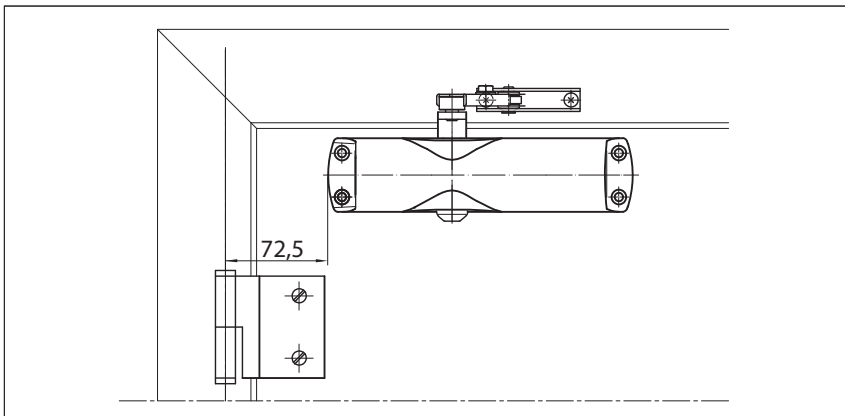
Product features	GEZE TS 1000 C closer
Closing force to EN 1154	2/3
Leaf width recommended up to	950 mm
Identical version DIN-L and DIN-R	●
Product tested in acc. with	Door closer tested in acc. with EN 1154
Length	215 mm
Installation depth	44 mm
Height	52 mm
Functions	
Adjustable closing force	● Via mounting
Adjustable closing speed	●
Adjustable latching action	● Via valve
Integrated back check	○
Closing force adjustment position	Mounting position

● = yes

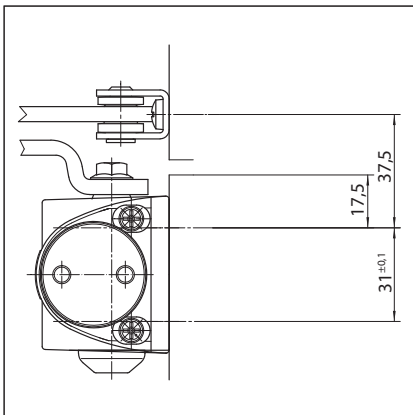
○ = no

Door leaf mounting/hinge side TS 1000 C

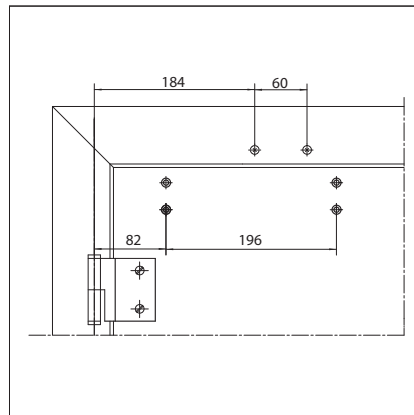
View



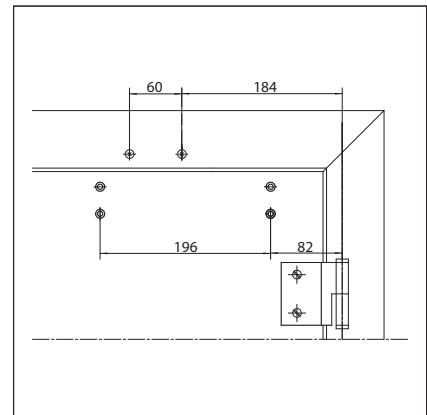
Mounting example for GEZE TS 1000 C

Direct mounting

Cross section = direct mounting

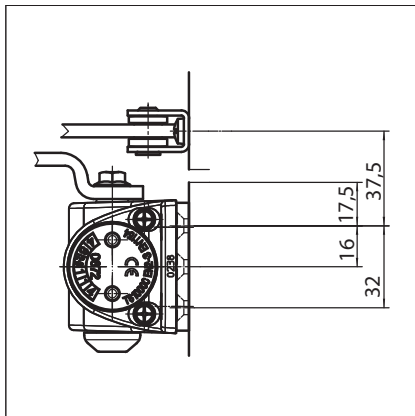


Fitting dimensions for left-hand door

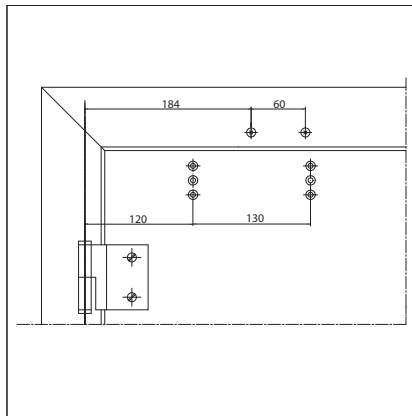


Fitting dimensions for right-hand door

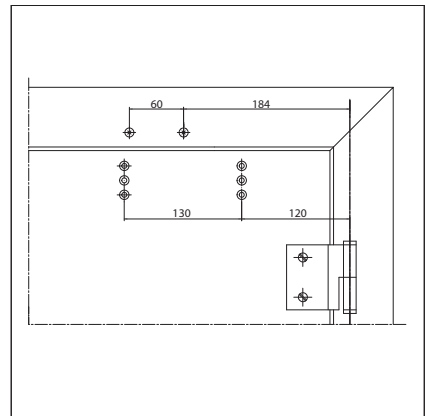
Mounting with mounting plate



Cross section = mounting with mounting plate



Fitting dimensions for left-hand door



Fitting dimensions for right-hand door

GEZE TS 1000 C - Ordering information

Designation	Version	ID no.
GEZE TS 1000 C closer Size EN 2/3 (without link arm)	Silver-coloured	114303
	Dark bronze	114304
	White RAL 9016	114305
	Black RAL 9005	114306
	Brass-coloured	114307
	Acc. to RAL ¹⁾	114308
GEZE TS 1000 C complete package Size EN 2/3, with hold-open linkage	Silver-coloured	101771
	Dark bronze	101772
	White RAL 9016	101773
	Black RAL 9005	101774
	Brass-coloured	101777
	Acc. to RAL	101776
GEZE TS 1000 C complete package Size EN 2/3, with link arm	Silver-coloured	101765
	Dark bronze	101766
	White RAL 9016	101767
	Black RAL 9005	101768
	Brass-coloured	101770
	Acc. to RAL	101769
Link arm TS 1500/1000C With mechanical hold-open	Silver-coloured	101815
	Dark bronze	101816
	White RAL 9016	101817
	Acc. to RAL ¹⁾	101818
Link arm TS 1500/1000C Standard	Silver-coloured	101878
	Dark bronze	101879
	White RAL 9016	101881
	Acc. to RAL ¹⁾	101882
Installation material		
Door closer mounting plate For TS 1000 C	Silver-coloured	072019
	Dark bronze	072020
	White RAL 9016	072021
	Black RAL 9005	072022

¹⁾ Surcharge for special RAL colours, see general information

GEZE TS 1500

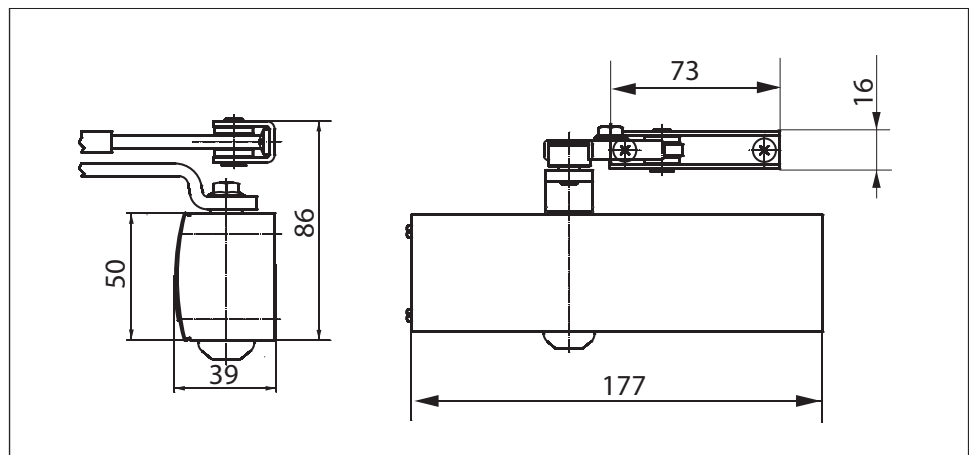
Link arm door closer for single-leaf doors with a leaf width up to 1100 mm

TS 1500 overhead door closer is suitable for single-leaf doors with a leaf width up to 1100 mm. The closing speed and hydraulic latching action can be adjusted. There are two different closing force settings, which can be selected simply by turning the bearing block for the link arm: 'Weak' closing force (size 3 acc. to EN 1154) for door leaf widths up to 950 mm and "strong" closing force (size 4 acc. to EN 1154) for door leaf widths up to 1100 mm. The door closer is available with an optional mounting plate. This makes it suitable for left and right single-action doors without the need for conversion.

Special version:

- GEZE TS 1500 with hold-open linkage featuring adjustable hold-open angle of between 70° and 150°

GEZE TS 1500



Application range

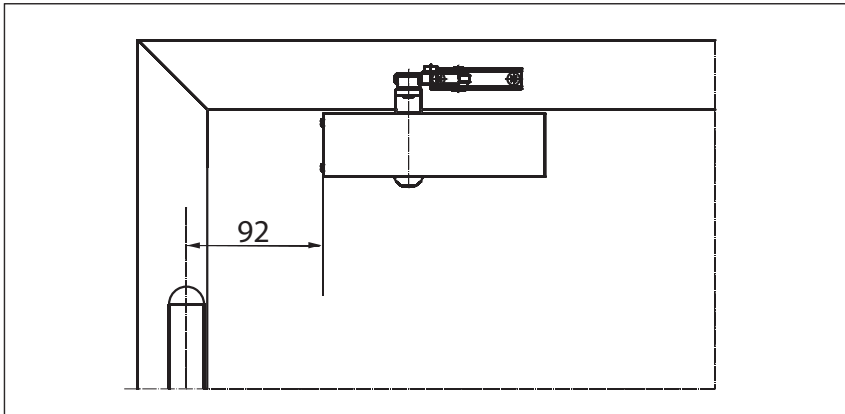
- For internal doors
- For single-action doors, leaf width up to 1100 mm
- Compatible with left-hand and right-hand doors without the need for conversion
- Standard mounting on door leaf, hinge side; transom mounting on opposite hinge side also possible

Closer specifications

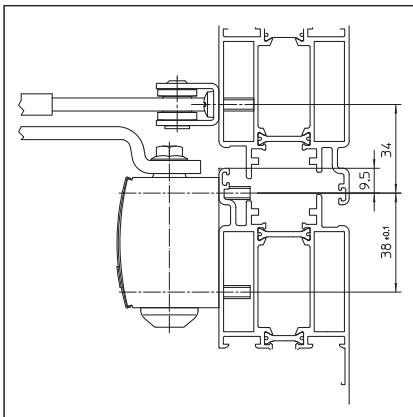
Product features	GEZE TS 1500 closer
Closing force to EN 1154	3/4
Leaf width recommended up to	1100 mm
Identical version DIN-L and DIN-R	●
Product tested in acc. with	Door closer tested in acc. with EN 1154
Length	177 mm
Installation depth	39 mm
Height	50 mm
Functions	
Adjustable closing force	● Via mounting
Adjustable closing speed	●
Adjustable latching action	● Via valve
Integrated back check	○
Closing force adjustment position	Mounting position

● = yes

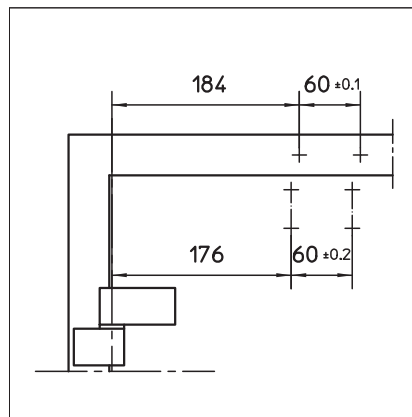
○ = no

Door leaf mounting/hinge side TS 1500**View**

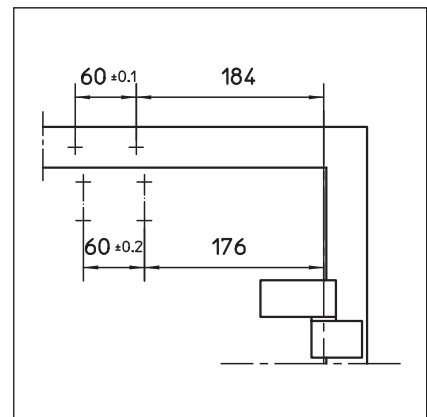
Mounting example for GEZE TS 1500

Direct mounting

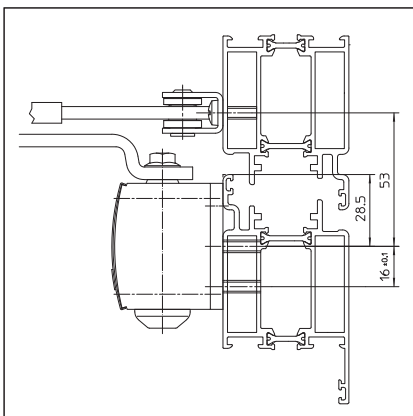
Cross section = direct mounting



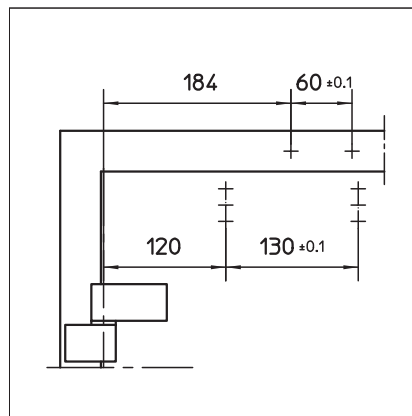
Fitting dimensions for left-hand door



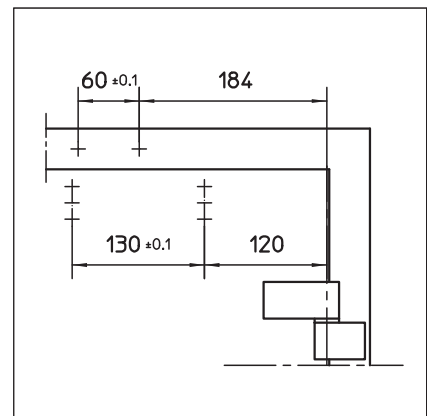
Fitting dimensions for right-hand door

Mounting with mounting plate

Cross section = mounting with mounting plate



Fitting dimensions for left-hand door



Fitting dimensions for right-hand door

GEZE TS 1500 – Ordering information

Designation	Version	ID no.
GEZE TS 1500 closer Size EN 3/4 (without link arm)	Silver-coloured	101792
	Dark bronze	101793
	White RAL 9016	101794
	Acc. to RAL ¹⁾	101875
Link arm TS 1500/1000 C With mechanical hold-open	Silver-coloured	101815
	Dark bronze	101816
	White RAL 9016	101817
	Acc. to RAL ¹⁾	101818
Link arm TS 1500/1000 C Standard	Silver-coloured	101878
	Dark bronze	101879
	White RAL 9016	101881
	Acc. to RAL ¹⁾	101882
Installation material		
Door closer mounting plate For TS 1500	Silver-coloured	029682
	Dark bronze	029683
	White RAL 9016	029685
	Acc. to RAL ¹⁾	029686
Accessories		
Door closer cover cap For TS 1500, only suitable for door leaf installation	Silver-coloured	080147
	Dark bronze	080148
	White RAL 9016	080149
	Acc. to RAL	080150

¹⁾ Surcharge for special RAL colours, see general information

GEZE TS 2000 NV

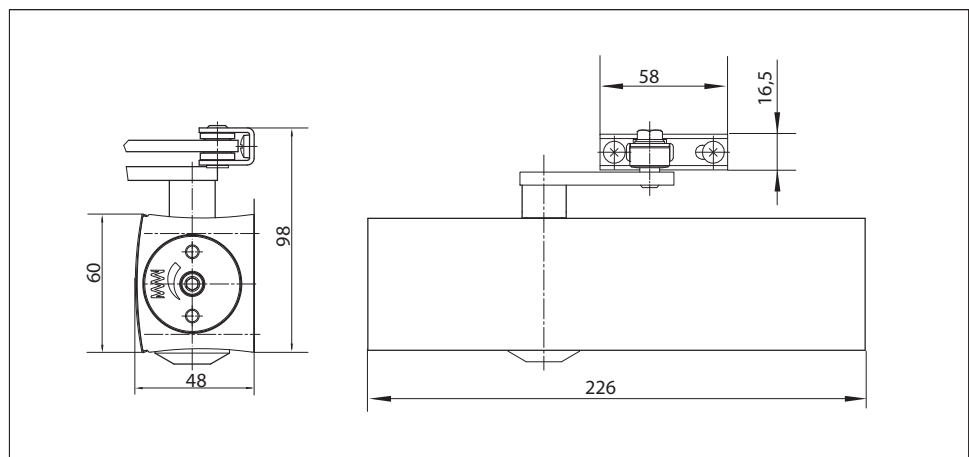
Link arm door closer for single-leaf doors with a leaf width up to 1100 mm

TS 2000 NV overhead door closer is approved for use with left and right single-action doors with leaf widths up to 1100 mm (without any need for conversion) and for use on fire and smoke doors. The closing force to DIN EN 1154 size 2-4 is infinitely variable and is adjusted at the side. The closing speed and latching action can be conveniently adjusted from the front.

Special versions:

- GEZE TS 2000 NV BC
With hydraulic back check that can be adjusted from the front
- GEZE TS 2000 NV/NV BC with hold-open linkage
With adjustable hold-open angle of between 70° and 150°

GEZE TS 2000 NV



Application range

- For single-action doors, leaf width up to 1100 mm
- Compatible with left-hand and right-hand doors without the need for conversion
- For fire and smoke doors (door closers with mounting plate)
- Standard mounting on door leaf, hinge side; transom mounting on opposite hinge side also possible
- Can be installed on door leaf on opposite hinge side with parallel arm mounting

Closer specifications

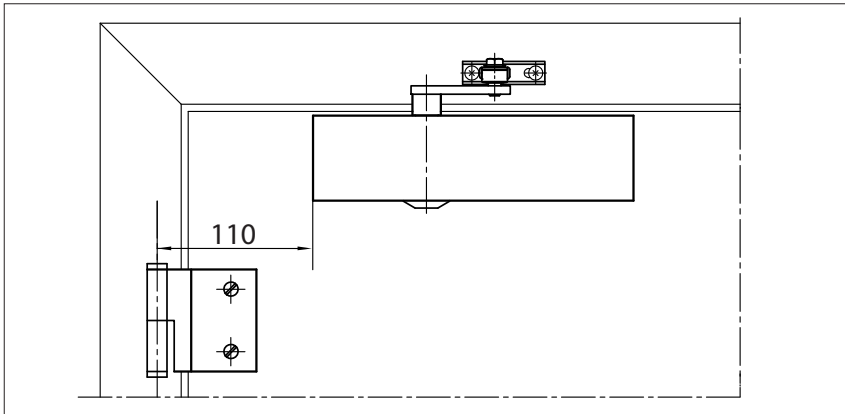
Product features	GEZE TS 2000 NV closer	GEZE TS 2000 NV BC closer
Closing force to EN 1154	2 - 4	
Leaf width recommended up to	1100 mm	
Identical version DIN-L and DIN-R	●	●
Product tested in acc. with	Door closer tested in acc. with EN 1154	
Suitable for fire and smoke doors	●	●
Mounting plate with hole pattern acc. to EN 1154 Supplement 1	●	●
Length	226 mm	
Installation depth	48 mm	
Height	60 mm	
Functions		
Adjustable closing force	● Infinitely variable	
Adjustable closing speed	●	●
Adjustable latching action	● Via valve	
Integrated back check	○	Yes, hydraulically adjustable
Closing force adjustment position	On the side	
Thermo-constant valves	●	●

● = yes

○ = no

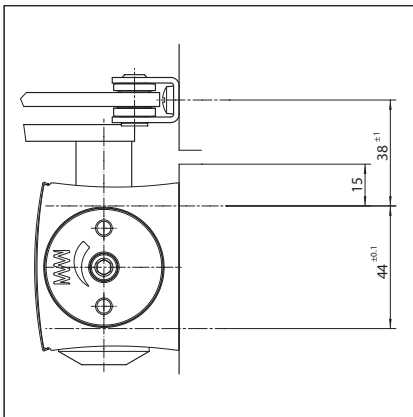
Door leaf mounting/hinge side TS 2000 NV/NV BC

View

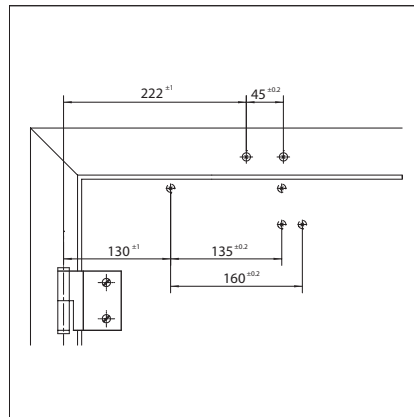


Mounting example for GEZE TS 2000 NV/NV BC

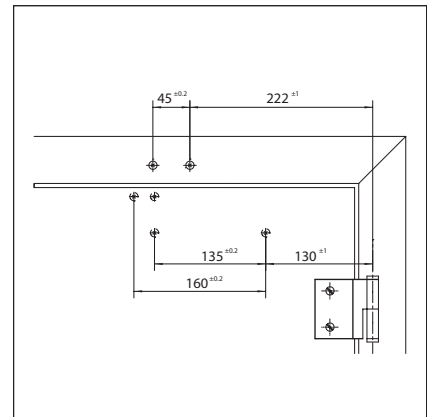
Direct mounting



Cross section = direct mounting

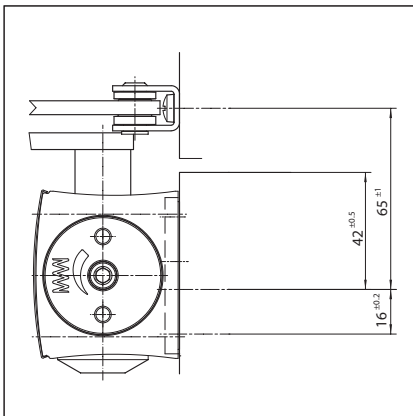


Fitting dimensions for left-hand door

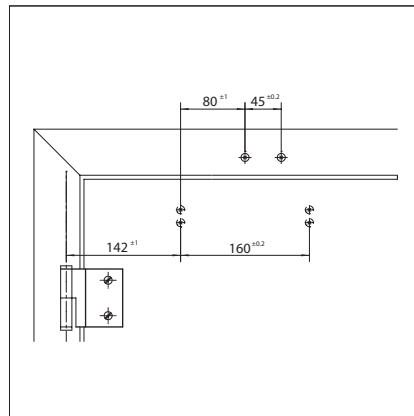


Fitting dimensions for right-hand door

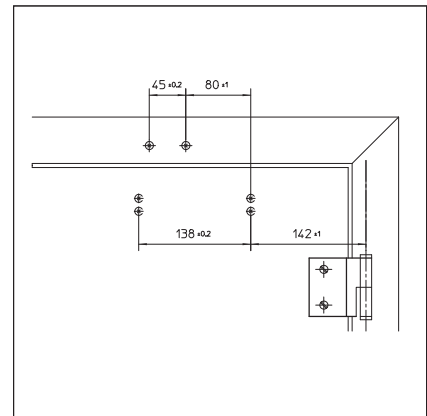
Mounting with mounting plate



Cross section = mounting with mounting plate



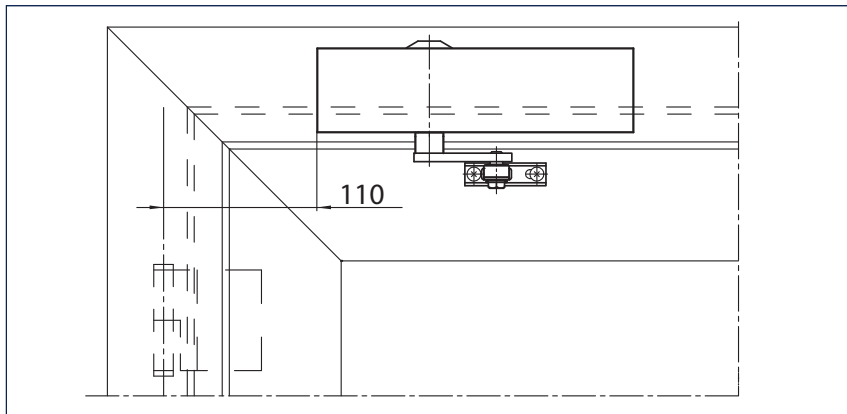
Fitting dimensions for left-hand door



Fitting dimensions for right-hand door

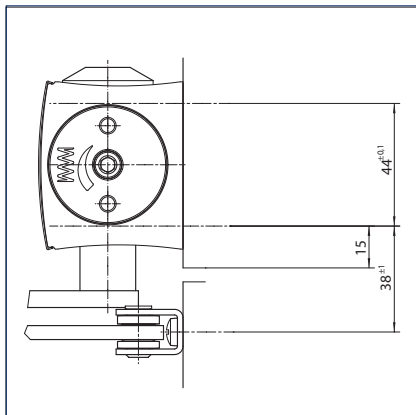
Transom mounting/opposite hinge side TS 2000 NV/NV BC

View

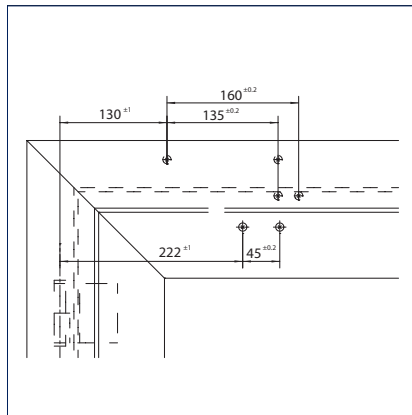


Mounting example for GEZE TS 2000 NV/NV BC

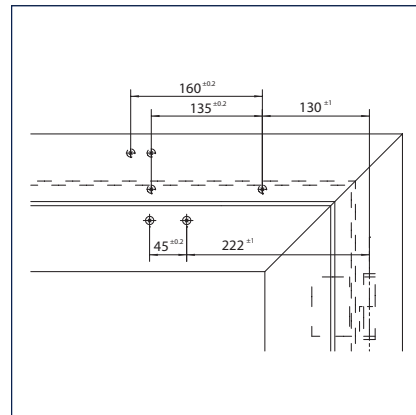
Direct mounting



Cross section = direct mounting

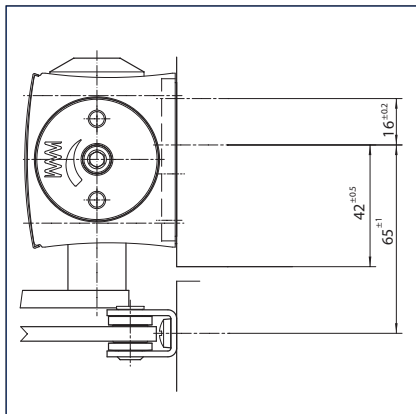


Fitting dimensions for right-hand door

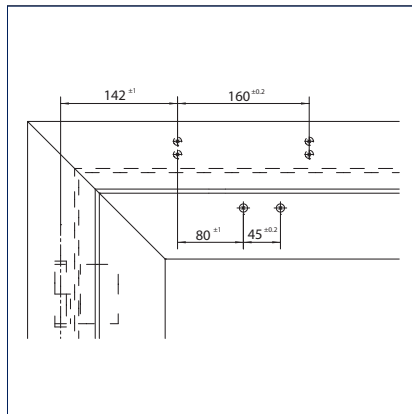


Fitting dimensions for left-hand door

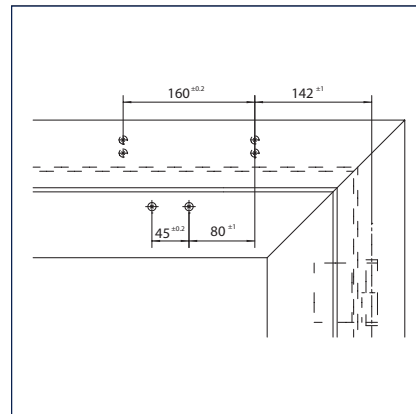
Mounting with mounting plate



Cross section = mounting with mounting plate



Fitting dimensions for right-hand door



Fitting dimensions for left-hand door

GEZE SYSTEM TS 4000 / TS 2000 / TS 1500

GEZE TS 2000 NV - Ordering information

Designation	Ausführung	ID no.
GEZE TS 2000 NV closer Size EN 2-4 (without link arm)	Silver-coloured	128885
	Dark bronze	128886
	White RAL 9016	128887
	Acc. to RAL ²⁾	128888
GEZE TS 2000 NV BC closer Size EN 2-4 with back check (without link arm)	Silver-coloured	124944
	Dark bronze	124945
	White RAL 9016	124946
	Acc. to RAL ²⁾	124947
Link arm TS 4000/2000 ³⁾ With mechanical hold-open	Silver-coloured	102454
	Dark bronze	102455
	White RAL 9016	102456
	Acc. to RAL ²⁾	102457
Link arm TS 4000/2000 With mechanical hold-open that can be switched on and off	Silver-coloured	102445
	Dark bronze	102446
	White RAL 9016	102447
	Acc. to RAL ²⁾	102448
Link arm TS 4000/2000 Extended, for transom mounting with a soffit depth of 70-170 mm	Silver-coloured	102431
	Dark bronze	102432
	White RAL 9016	102433
	Acc. to RAL ²⁾	102434
Link arm TS 4000/2000 Standard	Silver-coloured	102421
	Dark bronze	102422
	White RAL 9016	102423
	Stainless steel effect ¹⁾	102426
	Acc. to RAL ²⁾	102425
Installation material		
Spindle extension for TS 4000/TS 2000 Crown type connection	10 mm Galvanised	103548
	10 mm Black	103677
	15 mm Galvanised	103549
	15 mm Black	103678
	20 mm Galvanised	103550
	20 mm Black	103679
Door closer drilling template For TS 5000/4000/3000/2000		053134
Glass clamping plate for door closer For TS 3000/TS 2000NV	Silver-coloured	014835
	Dark bronze	014836
	White RAL 9016	014843
	nach RAL ²⁾	014845
All-glass door mounting and counter plate For TS 3000/TS 2000NV	Silver-coloured	090259
Link arm mounting plate For TS 4000/2000, with narrow rebates	Silver-coloured	057109
	Acc. to RAL ²⁾	082506
Link arm mounting plate For TS 4000/2000, with parallel arm mounting	Silver-coloured	053318
	Dark bronze	053319
	Acc. to RAL ²⁾	027460
Mounting plate for segmental arch door For TS 2000 NV, max. arch height 130 mm	Silver-coloured	127434
	Acc. to RAL ²⁾	127435
Door closer mounting plate For TS 2000 NV & NV BC with hole pattern acc. to DIN EN 1154 Supplement 1		126234
Lintel casing bracket for transom mounting opposite hinge side For TS 2000 NV	Silver-coloured	127432
Accessories		
Door closer cover cap For TS 3000/TS 2000, only suitable for door leaf installation	Silver-coloured	013487
	Dark bronze	014849
	White RAL 9016	014855
	Brass	072770
	Stainless steel	072769
	Acc. to RAL ²⁾	014856

1) Only suitable for dry rooms

2) Surcharge for special RAL colours, see general information

3) Not approved for fire and smoke doors in Germany

GEZE TS 2000 V

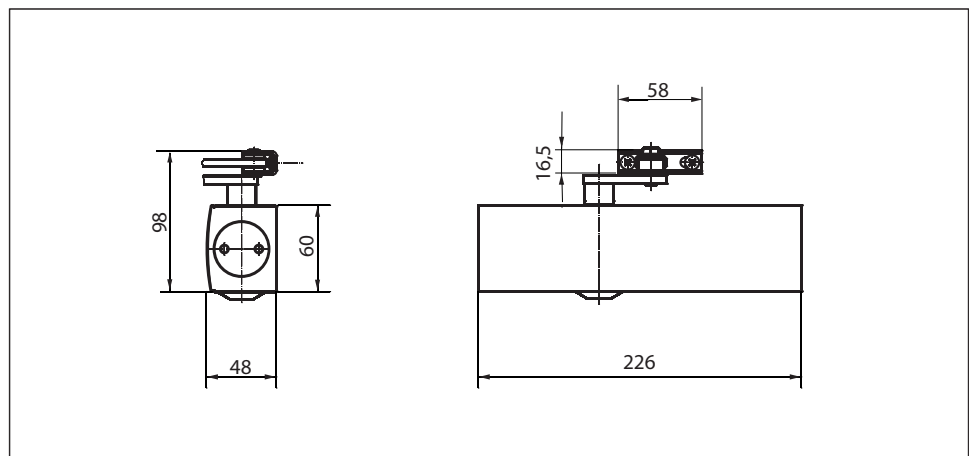
Link arm door closer for single-leaf doors with a leaf width up to 1250 mm

TS 2000 V overhead door closer is suitable for single-leaf doors with a leaf width up to 1250 mm. The closing force is variable in accordance with DIN EN 1154, size 2/4/5 (closing force is varied by changing the mounting position, but same size of closer is used in all cases). The closing speed can be conveniently adjusted from the front and the latching action is adjusted by means of the link arm. The door closer is available with an optional mounting plate. This makes it suitable for left and right single-action doors without the need for conversion.

Special versions:

- GEZE TS 2000 V BC
With hydraulic latching action that can be adjusted from the front and fixed back check setting
- GEZE TS 2000 V with hold-open linkage
With adjustable hold-open angle of between 70° and 150°

GEZE TS 2000 V



Application range

- For single-action doors, leaf width up to 1250 mm
- Compatible with left-hand and right-hand doors without the need for conversion
- Standard mounting on door leaf, hinge side; transom mounting on opposite hinge side also possible
- Can be installed on door leaf on opposite hinge side with parallel arm mounting

Closer specifications

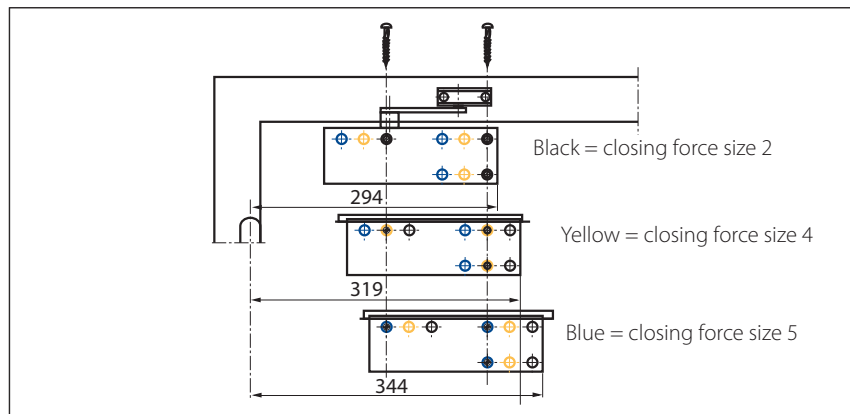
Product features	GEZE TS 2000 V closer	GEZE TS 2000 VBC closer
Closing force to EN 1154	2/4/5	
Leaf width recommended up to	1250 mm	
Identical version DIN-L and DIN-R	●	●
Product tested in acc. with	Door closer tested in acc. with EN 1154	
Length	226 mm	
Installation depth	48 mm	
Height	60 mm	
Functions		
Adjustable closing force	Yes, via mounting	
Adjustable closing speed	●	●
Adjustable latching action	● Via link arm	● Via valve
Integrated back check	○	● Hydraulic, fixed
Closing force adjustment position	Mounting position	
Thermo-constant valves	●	●

● = yes

○ = no

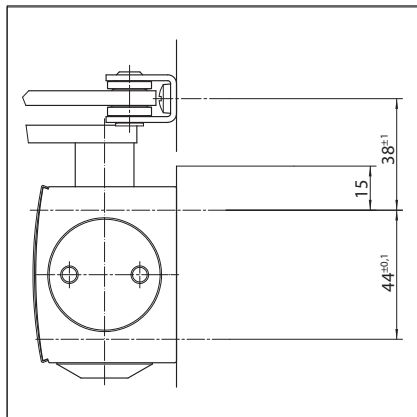
Door leaf mounting/hinge side TS 2000 V/V BC

View

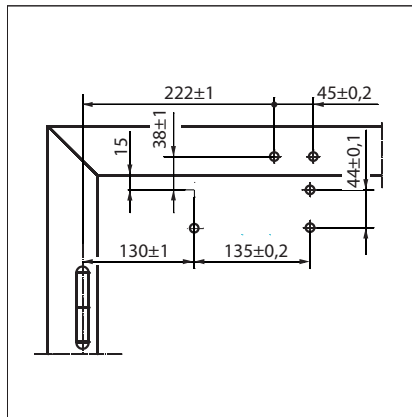


Mounting example for GEZE TS 2000 V/V BC (closing force EN 2/4/5)

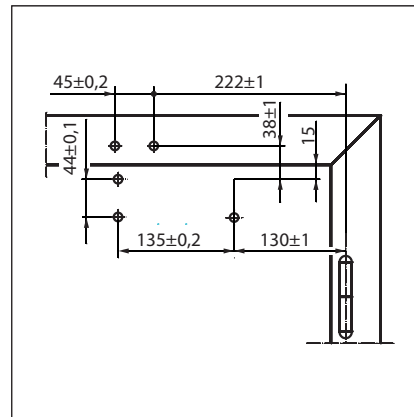
Direct mounting



Cross section = direct mounting

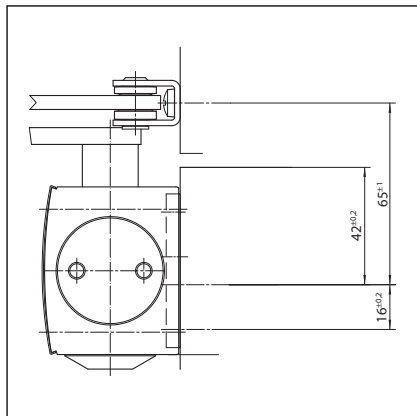


Fitting dimensions for left-hand door

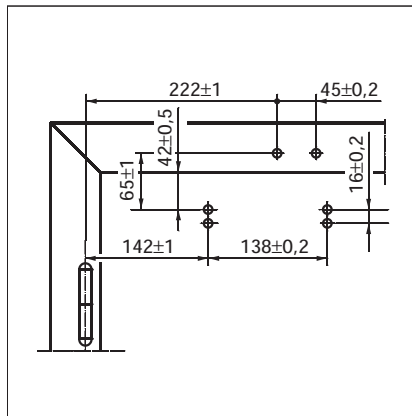


Fitting dimensions for right-hand door

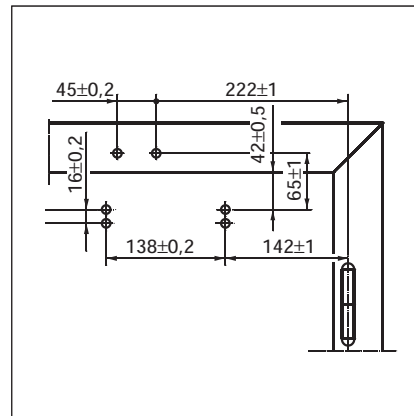
Mounting with mounting plate



Cross section = mounting with mounting plate



Fitting dimensions for left-hand door



Fitting dimensions for right-hand door

GEZE SYSTEM TS 4000 / TS 2000 / TS 1500

GEZE TS 2000 V – Ordering information

Designation	Version	ID no.
GEZE TS 2000 V closer Size EN 2/4/5 (without link arm)	Silver-coloured	103386
	Dark bronze	103387
	White RAL 9016	103388
	Acc. to RAL ²⁾	103389
GEZE TS 2000 VBC closer Size EN 2/4/5 with back check (without link arm)	Silver-coloured	103392
	Dark bronze	103393
	White RAL 9016	103394
	Acc. to RAL ²⁾	103406
Link arm TS 4000/2000 ³⁾ With mechanical hold-open	Silver-coloured	102454
	Dark bronze	102455
	White RAL 9016	102456
	Acc. to RAL ²⁾	102457
Link arm TS 4000/2000 With mechanical hold-open that can be switched on and off	Silver-coloured	102445
	Dark bronze	102446
	White RAL 9016	102447
	Acc. to RAL ²⁾	102448
Link arm TS 4000/2000 Extended, for transom mounting with a soffit depth of 70-170 mm	Silver-coloured	102431
	Dark bronze	102432
	White RAL 9016	102433
	Acc. to RAL ²⁾	102434
Link arm TS 4000/2000 Standard	Silver-coloured	102421
	Dark bronze	102422
	White RAL 9016	102423
	Stainless steel effect ¹⁾	102426
	Acc. to RAL ²⁾	102425
Installation material		
Spindle extension for TS 4000/TS 2000 Crown type connection	10 mm Galvanised	103548
	10 mm Black	103677
	15 mm Galvanised	103549
	15 mm Black	103678
	20 mm Galvanised	103550
	20 mm Black	103679
Door closer drilling template For TS 5000/4000/3000/2000		053134
Glass clamping plate for door closer For TS 2000 V	Silver-coloured	055773
	Dark bronze	055774
	Acc. to RAL	009499
	Acc. to RAL ²⁾	009500
Link arm mounting plate For TS 4000/2000, with narrow rebates	Silver-coloured	057109
	Acc. to RAL ²⁾	082506
Link arm mounting plate For TS 4000/2000, with parallel arm mounting	Silver-coloured	053318
	Dark bronze	053319
	Acc. to RAL ²⁾	027460
Mounting plate for segmental arch door For TS 2000 V, max. arch height 130 mm	Silver-coloured	059044
	Dark bronze	059045
Door closer mounting plate For TS 2000 V		055756
Lintel casing bracket for transom mounting opposite hinge side For TS 2000 V	Silver-coloured	055766
	Dark bronze	055767
	Acc. to RAL ²⁾	104450
Accessories		
Door closer cover cap For TS 3000/TS 2000, only suitable for door leaf installation	Silver-coloured	013487
	Dark bronze	014849
	White RAL 9016	014855
	Brass	072770
	Stainless steel	072769
	Acc. to RAL ²⁾	014856

1) Only suitable for dry rooms

2) Surcharge for special RAL colours, see general information

3) Not approved for fire and smoke doors in Germany

GEZE TS 4000

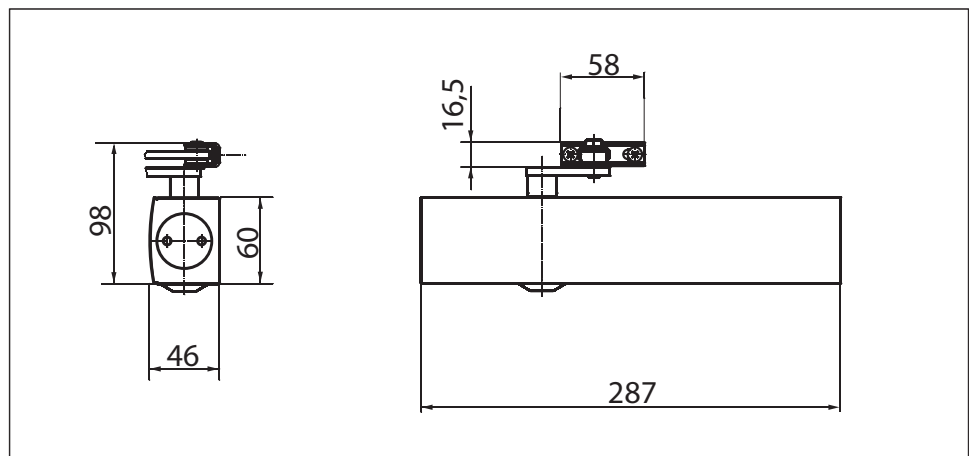
Link arm door closer for single-leaf doors with a leaf width up to 1400 mm

TS 4000 overhead door closer is approved for use with left and right single-action doors with leaf widths up to 1400 mm (without any need for conversion) and for mounting on fire and smoke doors. The closing force to EN 1154 size 1-6 is infinitely variable from the front and is easy to monitor thanks to the optical size indicator. The back check and thermo-constant closing speed are also adjustable from the front; the latching action is adjusted by means of the link arm. The closer features a safety valve for both the open and close directions.

Special versions:

- GEZE TS 4000 with hold-open linkage
Hold-open angle up to 150° (must not be used on fire and smoke doors)
- GEZE TS 4000 S
With delayed closing action of up to 30 seconds, adjustable from the front (delayed closing action not effective with transom mounting on opposite hinge side).
- GEZE TS 4000 door closer, wet room version
Same as TS 4000, but with specially nickel-plated spindle, bearing shells and stainless steel screw accessories for aggressive environments.

GEZE TS 4000



Application range

- For single-action doors, leaf width up to 1400 mm
- Compatible with left-hand and right-hand doors without the need for conversion
- For fire and smoke doors (door closers with mounting plate)
- Standard mounting on door leaf, hinge side; transom mounting on opposite hinge side also possible
- Can be installed on door leaf on opposite hinge side with parallel arm mounting

GEZE SYSTEM TS 4000 / TS 2000 / TS 1500

Closer specifications

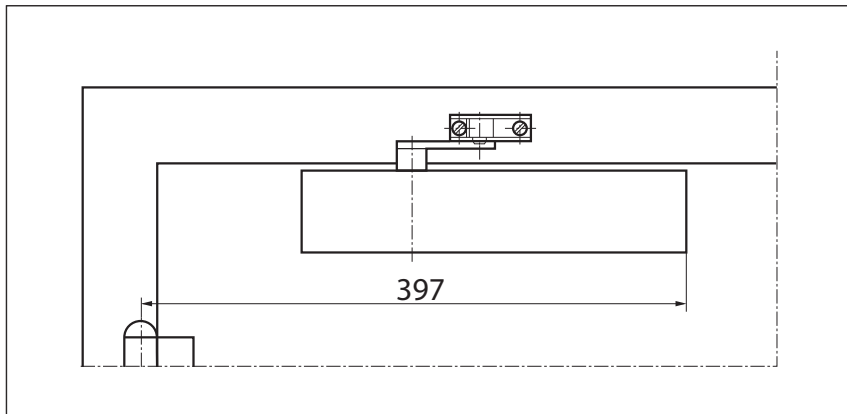
Product features	GEZE TS 4000 closer	GEZE TS 4000 S closer
Closing force to EN 1154	1 - 6	
Leaf width recommended up to	1400 mm	
Identical version DIN-L and DIN-R	●	●
Product tested in acc. with	Door closer tested in acc. with EN 1154	
Suitable for fire and smoke doors	●	●
Mounting plate with hole pattern acc. to EN 1154 Supplement 1	●	●
Length	287 mm	
Installation depth	46 mm	
Height	60 mm	
Functions		
Adjustable closing force	● Infinitely variable	
Adjustable closing speed	●	●
Adjustable latching action	● Via link arm	● Via valve
Integrated back check	● Hydraulically adjustable	
Integrated delayed closing action		●
Closing force adjustment position	Front	
Optical closing force display	●	●
Safety valve featuring protection against vandalism	●	●
Thermo-constant valves	●	●

● = yes

○ = no

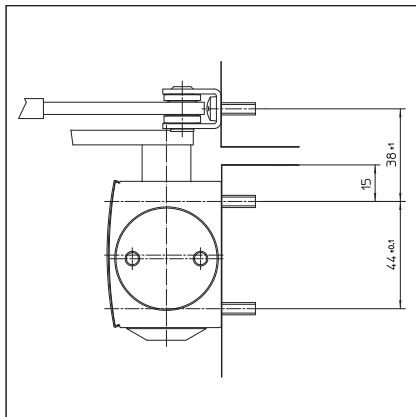
Door leaf mounting/hinge side TS 4000

View

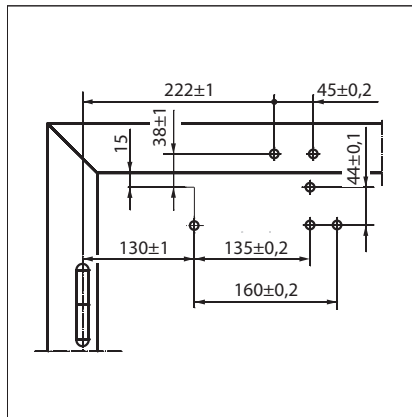


Mounting example for GEZE TS 4000 1-6, TS 4000 S, TS 4000 wet room

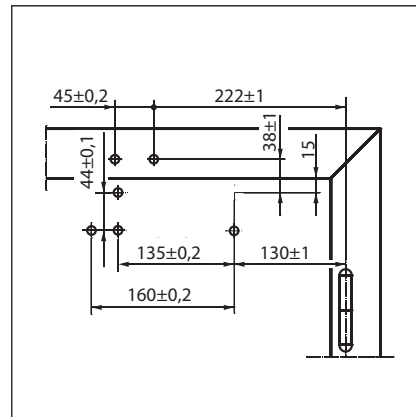
Direct mounting



Cross section = direct mounting

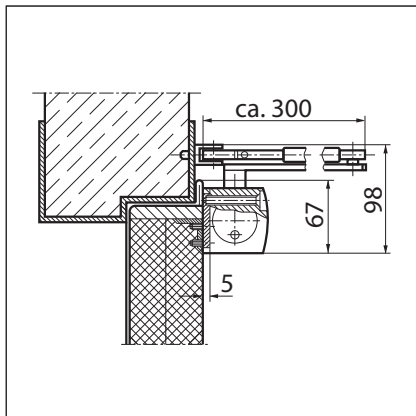


Fitting dimensions for left-hand door

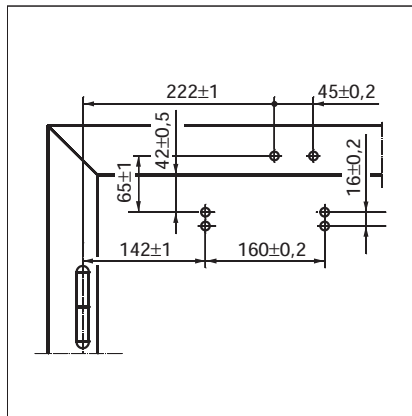


Fitting dimensions for right-hand door

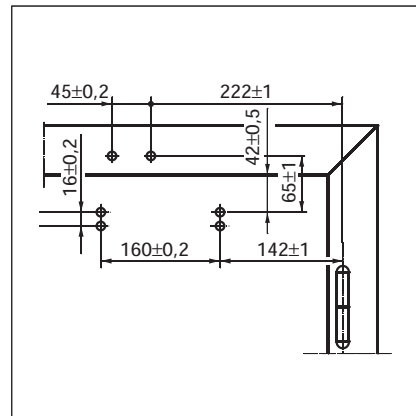
Mounting with mounting plate



Cross section = mounting with mounting plate



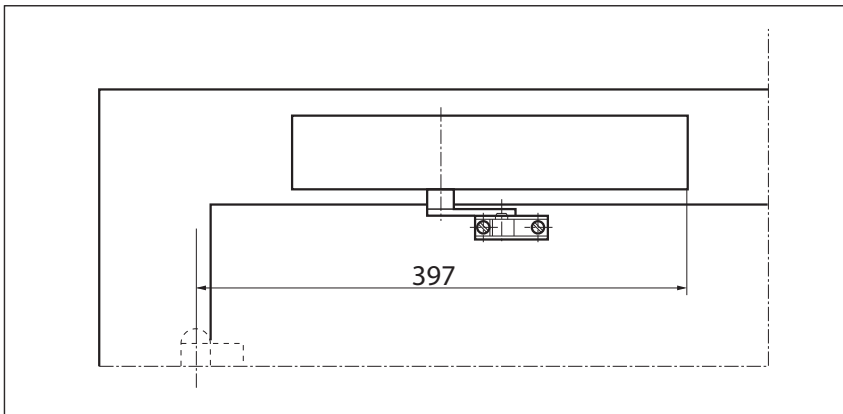
Fitting dimensions for left-hand door



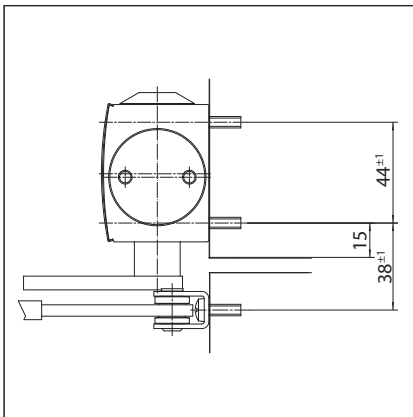
Fitting dimensions for right-hand door

Transom mounting/opposite hinge side TS 4000

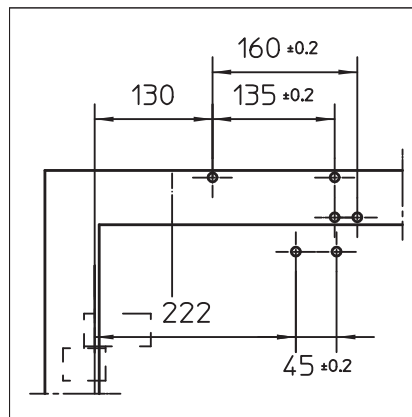
View



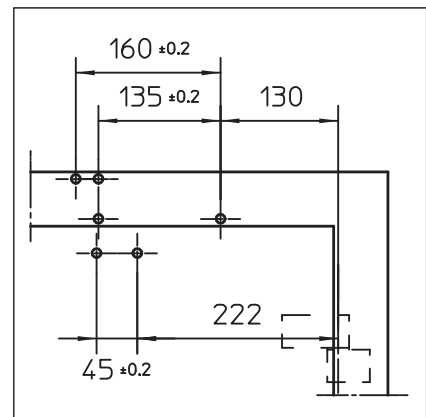
Mounting example for GEZE TS 4000 1-6, TS 4000 S, TS 4000 wet room

Direct mounting

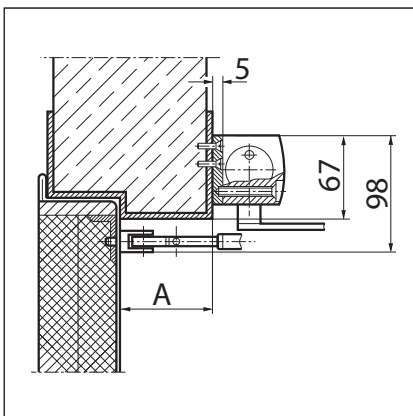
Cross section = direct mounting



Fitting dimensions for right-hand door

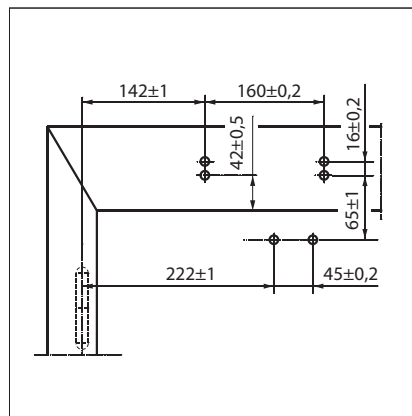


Fitting dimensions for left-hand door

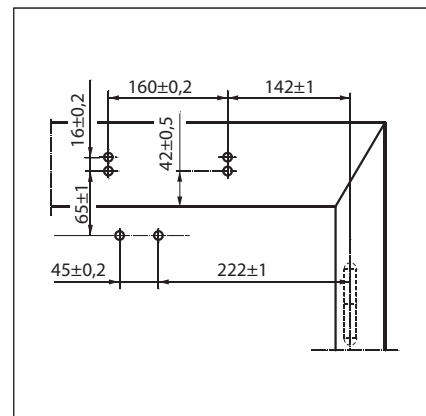
Mounting with mounting plate

Cross section = mounting with mounting plate

A = max. 70 mm lintel depth with fire and smoke doors



Fitting dimensions for right-hand door



Fitting dimensions for left-hand door

GEZE TS 4000 – Ordering information

Designation	Version	ID no.
GEZE TS 4000 closer Size EN 1-6 with back check (without link arm)	Silver-coloured	102789
	Dark bronze	102790
	White RAL 9016	102791
	Acc. to RAL ²⁾	102792
GEZE TS 4000 S closer Size EN 1-6 with delayed closing action and back check (without link arm)	Silver-coloured	107745
	Dark bronze	107746
	White RAL 9016	107747
	Acc. to RAL ²⁾	107748
Link arm TS 4000/2000 ³⁾ With mechanical hold-open	Silver-coloured	102454
	Dark bronze	102455
	White RAL 9016	102456
	Acc. to RAL ²⁾	102457
Link arm TS 4000/2000 With mechanical hold-open that can be switched on and off	Silver-coloured	102445
	Dark bronze	102446
	White RAL 9016	102447
	Acc. to RAL ²⁾	102448
Link arm TS 4000/2000 Extended, for transom mounting with a soffit depth of 70-170 mm	Silver-coloured	102431
	Dark bronze	102432
	White RAL 9016	102433
	Acc. to RAL ²⁾	102434
Link arm TS 4000/2000 Standard	Silver-coloured	102421
	Dark bronze	102422
	White RAL 9016	102423
	Stainless steel effect ¹⁾	102426
	Acc. to RAL ²⁾	102425
GEZE TS 4000 wet room version complete package Size EN 1-6 with back check, special protection against corrosion with stainless steel screw accessories and standard link arm	Silver-coloured	120104

1) Only suitable for dry rooms

2) Surcharge for special RAL colours, see general information

3) Not approved for fire and smoke doors in Germany

GEZE SYSTEM TS 4000 / TS 2000 / TS 1500

Installation material

Spindle extension for TS 4000/TS 2000 Crown type connection	10 mm	Galvanised	103548
	10 mm	Black	103677
	15 mm	Galvanised	103549
	15 mm	Black	103678
	20 mm	Galvanised	103550
	20 mm	Black	103679
Door closer drilling template For TS 5000/4000/3000/2000			053134
Glass clamping plate for door closer For TS 5000/TS 4000		Silver-coloured	057126
		Dark bronze	057127
		White RAL 9016	009491
		Acc. to RAL ²⁾	009494
All-glass door mounting and counter plate For TS 5000/TS 4000		Silver-coloured	007923
		Dark bronze	007924
		Acc. to RAL ²⁾	007926
Link arm mounting plate For TS 4000/2000, with narrow rebates		Silver-coloured	057109
		Acc. to RAL ²⁾	082506
Link arm mounting plate For TS 4000/2000, with parallel arm mounting		Silver-coloured	053318
		Dark bronze	053319
		Acc. to RAL ²⁾	027460
Mounting plate for segmental arch door For TS 4000, max. arch height 130 mm		Silver-coloured	058782
		Dark bronze	058783
		Acc. to RAL ²⁾	119472
Door closer mounting plate For TS 5000/4000 with hole pattern acc. to DIN EN 1154 Supplement 1		Silver-coloured	049185
		Dark bronze	052351
		White RAL 9016	068627
		Galvanised	057956
		Acc. to RAL ²⁾	029176
Lintel casing bracket for transom mounting opposite hinge side For TS 5000/TS 4000		Silver-coloured	049240
		Dark bronze	052352
		Acc. to RAL ²⁾	104451
Accessories			
Door closer cover cap For TS 5000/TS 4000, only suitable for door leaf installation		Silver-coloured	067724
		Dark bronze	067725
		White RAL 9016	067726
		Brass	072698
		Stainless steel	072696
		Acc. to RAL ²⁾	000756

1) Only suitable for dry rooms

2) Surcharge for special RAL colours, see general information

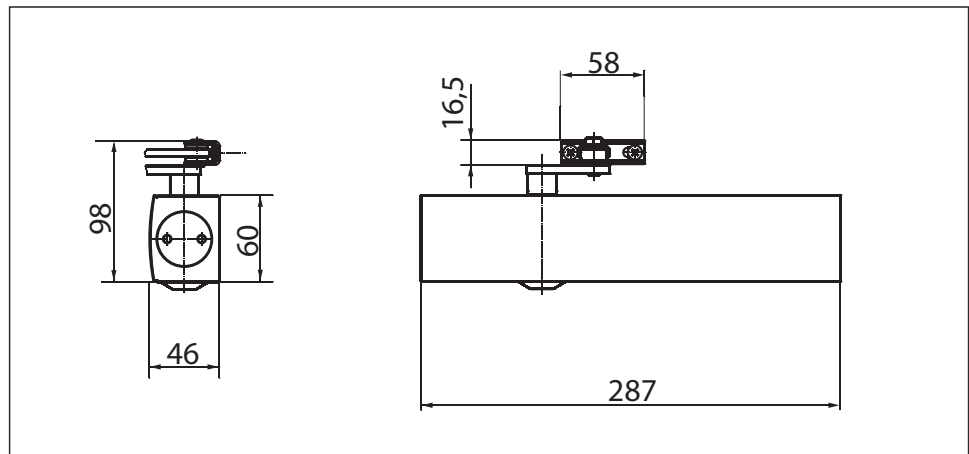
3) Not approved for fire and smoke doors in Germany

GEZE TS 4000 size 5-7**Link arm door closer for single-leaf doors with a leaf width up to 1600 mm**

TS 4000 overhead door closer is approved for use with left and right single-action doors with leaf widths up to 1600 mm (without any need for conversion) and for mounting on fire and smoke doors. The closing force to EN 1154 size 5-7 is infinitely variable from the front and is easy to monitor thanks to the optical size indicator. The back check and thermo-constant closing speed are also adjustable from the front; the latching action is adjusted by means of the link arm. The closer features a safety valve for both the open and close directions.

Special versions:

- GEZE TS 4000 with hold-open linkage
Hold-open angle of up to 150° (must not be used on fire and smoke doors, hold-open mechanism only effective up to size EN 6)

GEZE TS 4000 size 5-7**Application range**

- For single-action doors, leaf width up to 1600 mm
- Compatible with left-hand and right-hand doors without the need for conversion
- For fire and smoke doors (door closers with mounting plate)
- Standard mounting on door leaf, hinge side; transom mounting on opposite hinge side also possible
- Can be installed on door leaf on opposite hinge side with parallel arm mounting

Closer specifications

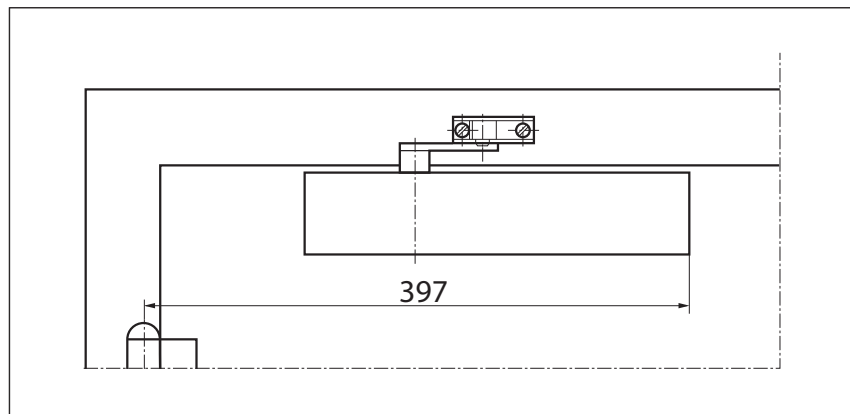
Product features	GEZE TS 4000 closer
Closing force to EN 1154	5 - 7
Leaf width recommended up to	1600 mm
Identical version DIN-L and DIN-R	●
Product tested in acc. with	Door closer tested in acc. with EN 1154
Suitable for fire and smoke doors	●
Mounting plate with hole pattern acc. to EN 1154 Supplement 1	●
Length	287 mm
Installation depth	46 mm
Height	60 mm
Functions	
Adjustable closing force	● Infinitely variable
Adjustable closing speed	●
Adjustable latching action	● Via link arm
Integrated back check	● Hydraulically adjustable
Closing force adjustment position	Front
Optical closing force display	●
Safety valve featuring protection against vandalism	●
Thermo-constant valves	●

● = yes

○ = no

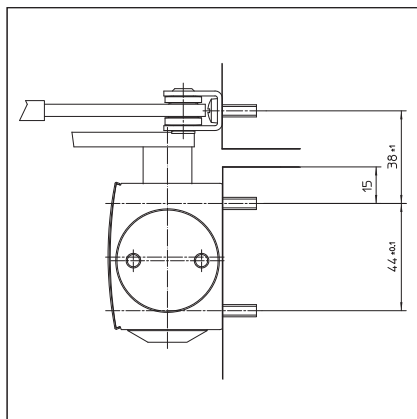
Door leaf mounting/hinge side TS 4000 size 5-7

View

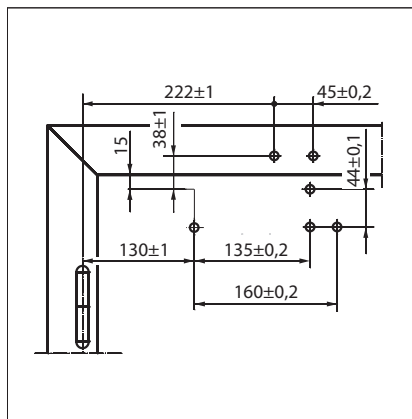


Mounting example for GEZE TS 4000 5-7

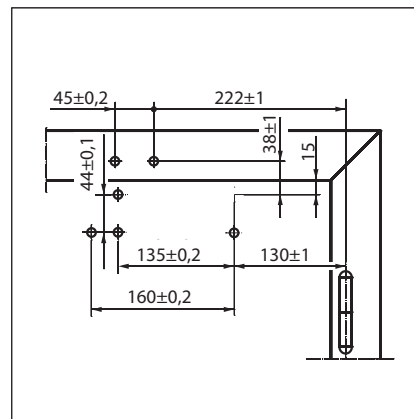
Direct mounting



Cross section = direct mounting

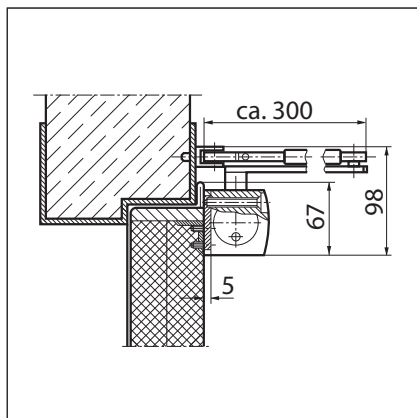


Fitting dimensions for left-hand door

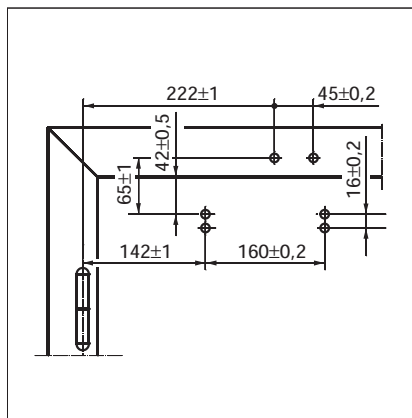


Fitting dimensions for right-hand door

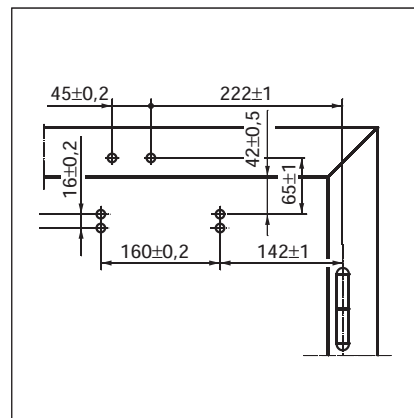
Mounting with mounting plate



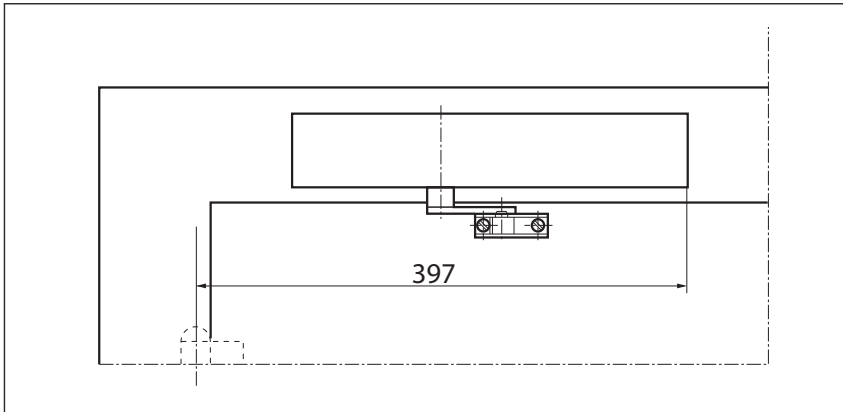
Cross section = mounting with mounting plate



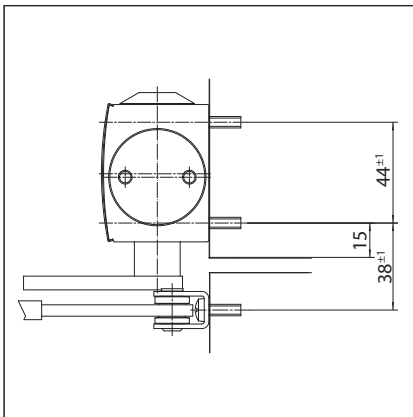
Fitting dimensions for left-hand door



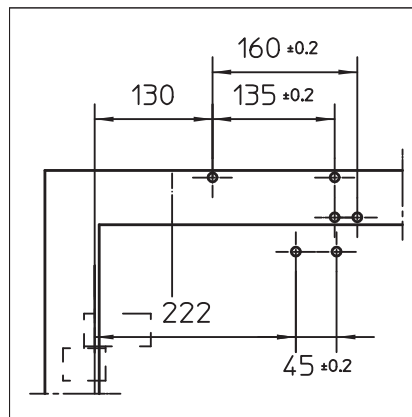
Fitting dimensions for right-hand door

Transom mounting/opposite hinge side TS 4000 size 5-7**View**

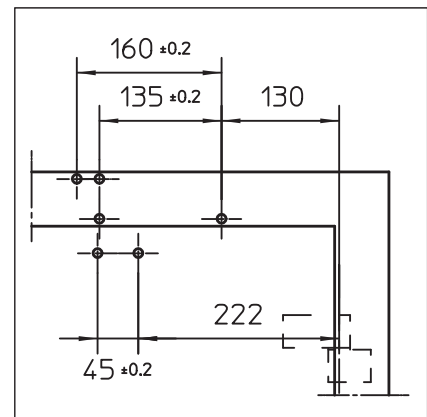
Mounting example for GEZE TS 4000 5-7

Direct mounting

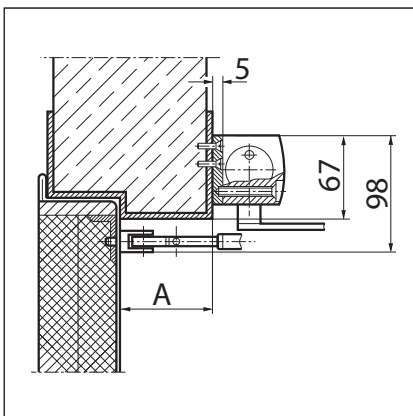
Cross section = direct mounting



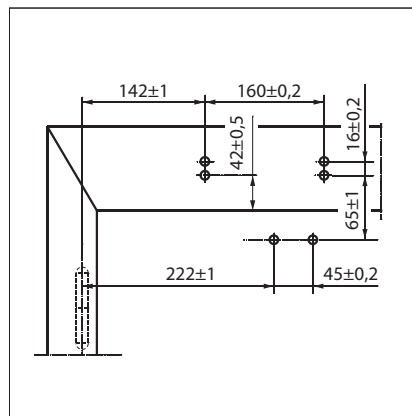
Fitting dimensions for right-hand door



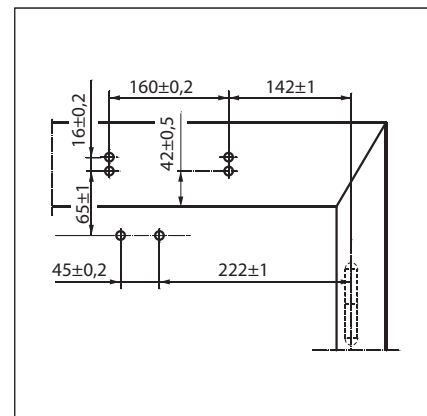
Fitting dimensions for left-hand door

Mounting with mounting plate

Cross section = mounting with mounting plate
 A = max. 70 mm lintel depth with fire and smoke doors



Fitting dimensions for right-hand door



Fitting dimensions for left-hand door

GEZE SYSTEM TS 4000 / TS 2000 / TS 1500

GEZE TS 4000 size 5-7 - Ordering information

Designation	Version	ID no.
GEZE TS 4000 closer Size EN 5-7 with back check (without link arm)	Silver-coloured	102837
	Acc. to RAL ²⁾	102838
Link arm TS 4000/2000 ³⁾ With mechanical hold-open	Silver-coloured	102454
	Dark bronze	102455
	White RAL 9016	102456
	Acc. to RAL ²⁾	102457
	Silver-coloured	102445
Link arm TS 4000/2000 With mechanical hold-open that can be switched on and off	Dark bronze	102446
	White RAL 9016	102447
	Acc. to RAL ²⁾	102448
	Silver-coloured	102431
Link arm TS 4000/2000 Extended, for transom mounting with a soffit depth of 70-170 mm	Dark bronze	102432
	White RAL 9016	102433
	Acc. to RAL ²⁾	102434
	Silver-coloured	102421
Link arm TS 4000/2000 Standard	Dark bronze	102422
	White RAL 9016	102423
	Stainless steel effect ¹⁾	102426
	Acc. to RAL ²⁾	102425
Installation material		
Spindle extension for TS 4000/TS 2000 Crown type connection	10 mm Galvanised	103548
	10 mm Black	103677
	15 mm Galvanised	103549
	15 mm Black	103678
	20 mm Galvanised	103550
	20 mm Black	103679
Door closer drilling template For TS 5000/4000/3000/2000		053134
Glass clamping plate for door closer For TS 5000/TS 4000	Silver-coloured	057126
	Dark bronze	057127
	White RAL 9016	009491
	Acc. to RAL ²⁾	009494
All-glass door mounting and counter plate For TS 5000/TS 4000	Silver-coloured	007923
	Dark bronze	007924
	Acc. to RAL ²⁾	007926
Link arm mounting plate For TS 4000/2000, with narrow rebates	Silver-coloured	057109
	Acc. to RAL ²⁾	082506
Link arm mounting plate For TS 4000/2000, with parallel arm mounting	Silver-coloured	053318
	Dark bronze	053319
	Acc. to RAL ²⁾	027460
Mounting plate for segmental arch door For TS 4000, max. arch height 130 mm	Silver-coloured	058782
	Dark bronze	058783
	Acc. to RAL ²⁾	119472
Door closer mounting plate For TS 5000/4000 with hole pattern acc. to DIN EN 1154 Supplement 1	Silver-coloured	049185
	Dark bronze	052351
	White RAL 9016	068627
	Galvanised	057956
	Acc. to RAL ²⁾	029176
Lintel casing bracket for transom mounting opposite hinge side For TS 5000/TS 4000	Silver-coloured	049240
	Dark bronze	052352
	Acc. to RAL ²⁾	104451
Accessories		
Door closer cover cap For TS 5000/TS 4000, only suitable for door leaf installation	Silver-coloured	067724
	Dark bronze	067725
	White RAL 9016	067726
	Brass	072698
	Stainless steel	072696
	Acc. to RAL ²⁾	000756

1) Only suitable for dry rooms

2) Surcharge for special RAL colours, see general information

3) Not approved for fire and smoke doors in Germany

GEZE TS 4000 E

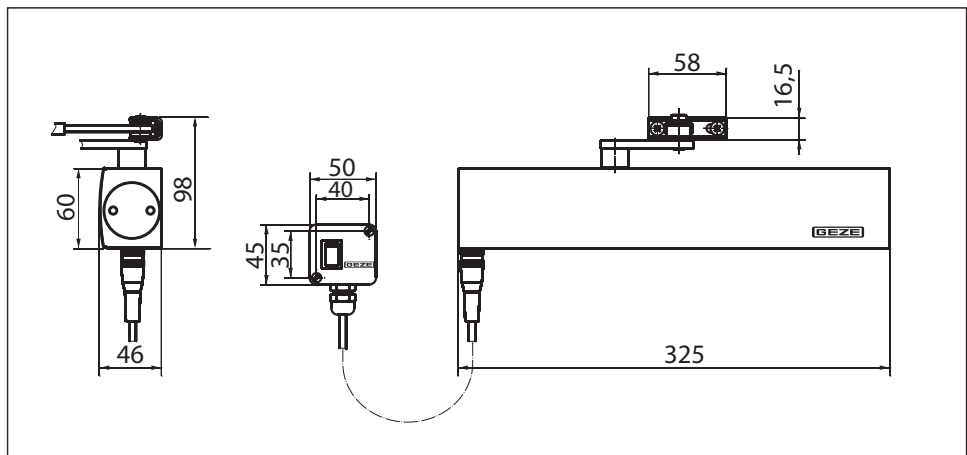
Link arm door closer for single-leaf doors with a leaf width up to 1400 mm featuring electric hold-open

TS 4000 E (24 V DC) overhead door closer, featuring an electric hold-open that is infinitely variable between 80° and 175° in accordance with EN 1155, is approved for use with left and right single-action doors with a door leaf width up to 1400 mm and for mounting on fire and smoke doors. In the event of a fire or power failure, the hold-open mechanism is activated and the door closes securely. The size 1-6 closing force to EN 1154, with optical size indicator, and the thermoconstant closing speed can be conveniently adjusted from the front; the latching action is adjusted by means of the link arm.

Special version:

- GEZE TS 4000 E/transom mounting on opposite hinge side 24 V DC

GEZE TS 4000 E



Application range

- For single-action doors, leaf width up to 1400 mm
- Compatible with left-hand and right-hand doors without the need for conversion
- For fire and smoke doors (door closers with mounting plate)
- Standard mounting on door leaf, hinge side; transom mounting on opposite hinge side also possible
- Transom mounting on hinge side possible with guide rail, closing force EN3, not approved for fire and smoke doors

Closer specifications

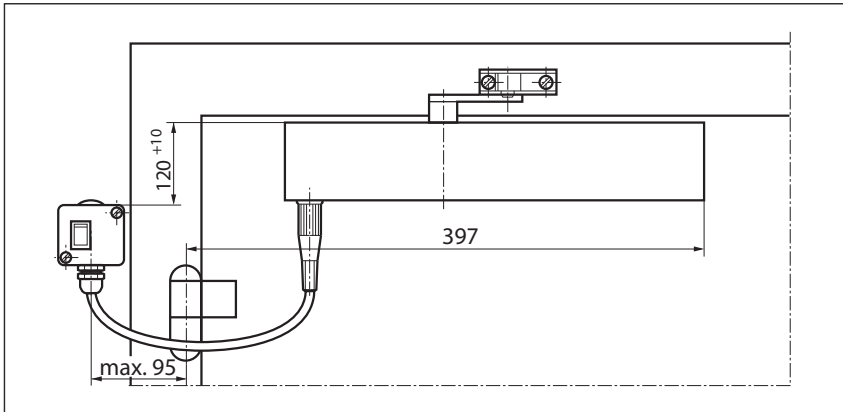
Product features	GEZE TS 4000 E closer
Closing force to EN 1154	1 - 6
Leaf width recommended up to	1400 mm
Identical version DIN-L and DIN-R	●
Supply voltage	24 V DC
Enclosure rating IP	IP 43
Product tested in acc. with	Door closer tested in acc. with EN 1154 Hold-open mechanism tested in acc. with EN 1155
Suitable for fire and smoke doors	●
Mounting plate with hole pattern acc. to EN 1154 Supplement 1	●
Length	325 mm
Installation depth	46 mm
Height	60 mm
Functions	
Adjustable closing force	● Infinitely variable
Adjustable closing speed	●
Adjustable latching action	● Via link arm
Integrated back check	○
Closing force adjustment position	Front
Optical closing force display	●
Safety valve featuring protection against vandalism	●
Thermo-constant valves	●
Integrated hold-open mechanism	Electric
Hold-open angle	80°-175°
Hold-open mechanism can be overridden	●

● = yes

○ = no

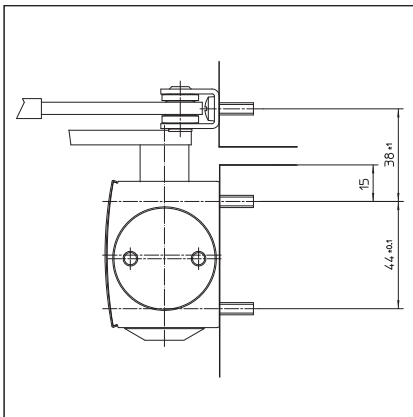
Door leaf mounting/hinge side TS 4000 E

View

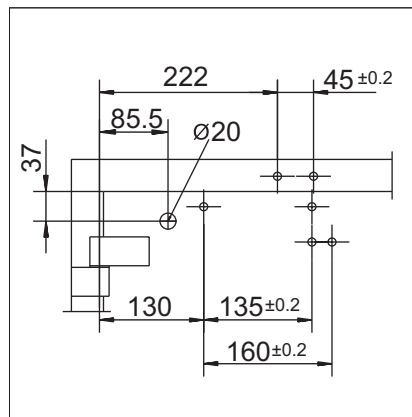


Mounting example for GEZE TS 4000 E

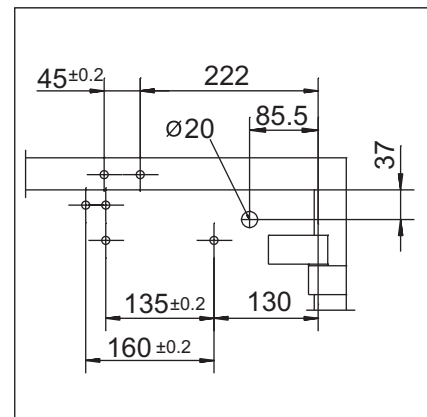
Direct mounting



Cross section = direct mounting

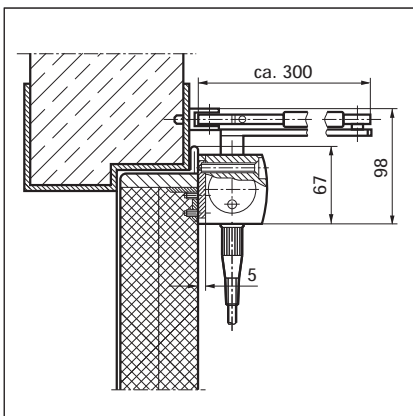


Fitting dimensions for left-hand door

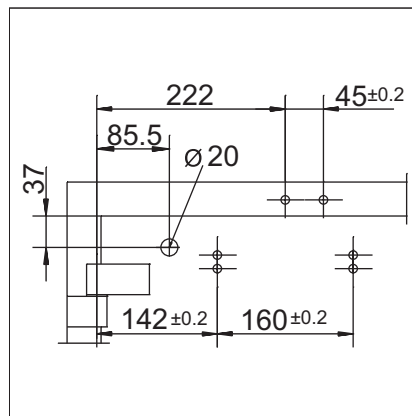


Fitting dimensions for right-hand door

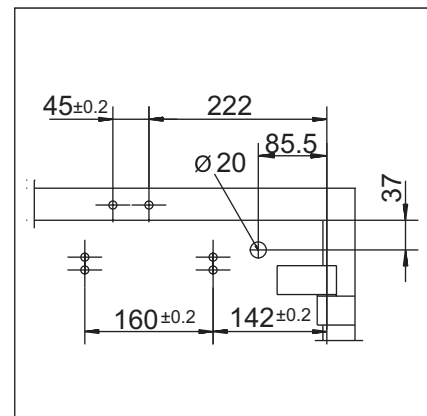
Mounting with mounting plate



Cross section = mounting with mounting plate



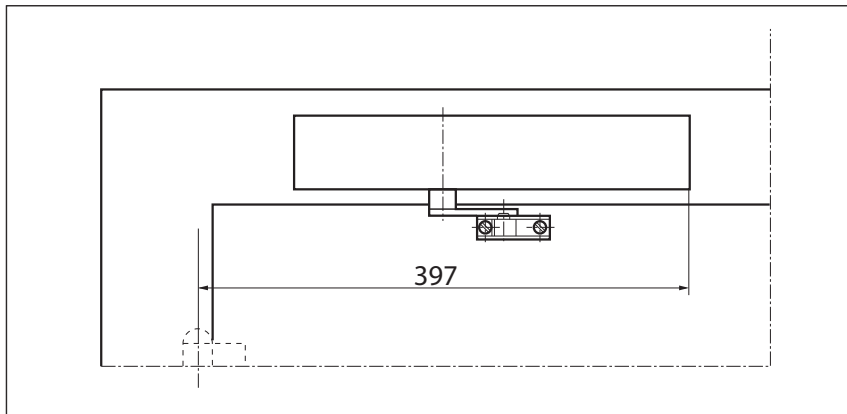
Fitting dimensions for left-hand door



Fitting dimensions for right-hand door

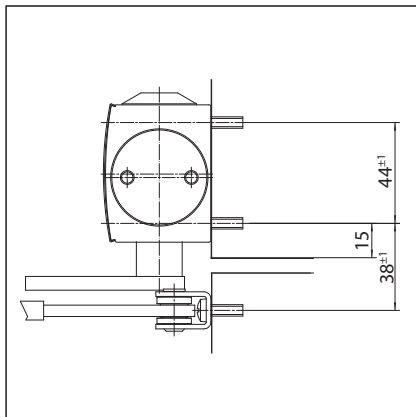
Transom mounting/opposite hinge side TS 4000 E

View

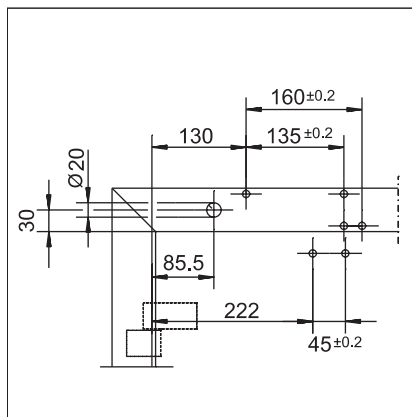


Mounting example for GEZE TS 4000 E

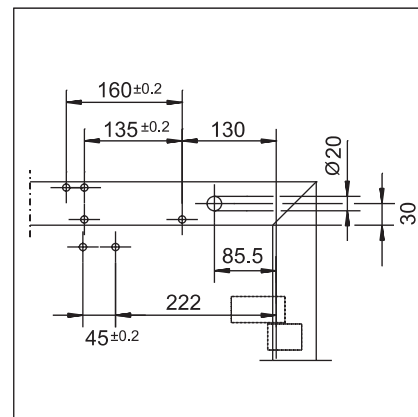
Direct mounting



Cross section = direct mounting

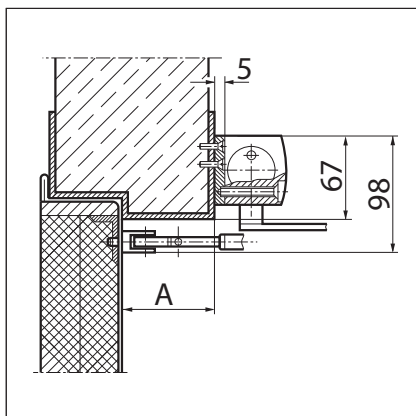


Fitting dimensions for right-hand door

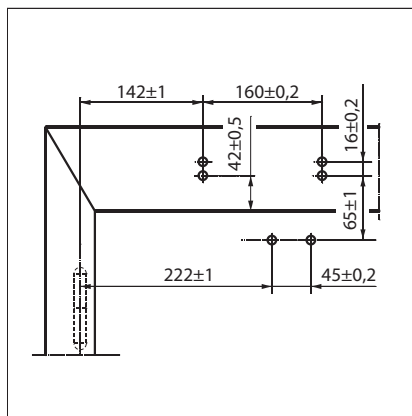


Fitting dimensions for left-hand door

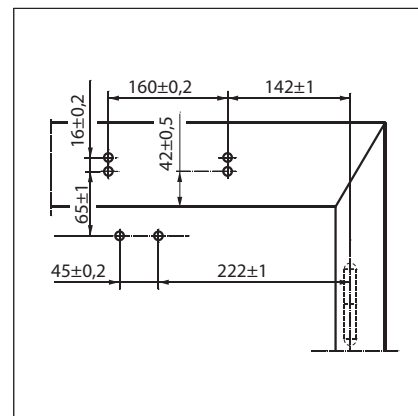
Mounting with mounting plate



Cross section = mounting with mounting plate
 A = max. 70 mm lintel depth with fire and smoke doors



Fitting dimensions for right-hand door



Fitting dimensions for left-hand door

GEZE TS 4000 E - Ordering information

Designation	Version	ID no.	
GEZE TS 4000 E closer	Silver-coloured	105211	
Size EN 1-6, door leaf installation on hinge side, featuring electric hold-open and connector box (without link arm)	Acc. to RAL ²⁾	105212	
GEZE TS 4000 E KM BG closer	Silver-coloured	105213	
Size EN 1-6, transom mounting on opposite hinge side, featuring electric hold-open (without link arm)	Acc. to RAL ²⁾	105214	
GEZE TS 4000 E KM BS closer ³⁾	Silver-coloured	105235	
Size EN 1-3, transom mounting on hinge side, featuring electric hold-open (without guide rail)	Acc. to RAL ²⁾	105236	
Guide rail TS 4000 E/R	Silver-coloured	102527	
With lever, designed for transom mounting on hinge side	Acc. to RAL ²⁾	102530	
Link arm TS 4000/2000 Extended, for transom mounting with a soffit depth of 70-170 mm	Silver-coloured	102431	
	Dark bronze	102432	
	White RAL 9016	102433	
	Acc. to RAL ²⁾	102434	
Link arm TS 4000/2000 Standard	Silver-coloured	102421	
	Dark bronze	102422	
	White RAL 9016	102423	
	Stainless steel effect ¹⁾	102426	
	Acc. to RAL ²⁾	102425	
Installation material			
Spindle extension for TS 4000/TS 2000 Crown type connection	10 mm	Galvanised	103548
	10 mm	Black	103677
	15 mm	Galvanised	103549
	15 mm	Black	103678
	20 mm	Galvanised	103550
	20 mm	Black	103679
Door closer drilling template For TS 5000/4000/3000/2000			053134
Link arm mounting plate For TS 4000/2000, with narrow rebates	Silver-coloured		057109
	Acc. to RAL ²⁾		082506
Link arm mounting plate For TS 4000/2000, with parallel arm mounting	Silver-coloured		053318
	Dark bronze		053319
	Acc. to RAL ²⁾		027460
Door closer mounting plate For TS 5000 EFS/RFS/EHY / 4000 E with hole pattern acc. to DIN EN 1154 Supplement 1	Silver-coloured		059107
	Acc. to RAL ²⁾		100044
Accessories			
GEZE smoke switch control unit RSZ 6 Approved for all GEZE hold-open mechanisms	Silver-coloured		099851
	Dark bronze		099857
	White RAL 9016		099858
	Stainless steel effect ¹⁾		099856
	Acc. to RAL ²⁾		099859
GEZE smoke switch RS 5 For ceiling and lintel mounting	Silver-coloured		027052
	Dark bronze		028939
	White RAL 9016		028940
	Stainless steel effect ¹⁾		028942
	Acc. to RAL ²⁾		028941
GEZE circuit breaker Concealed version, for manual release of electrically controlled door closers and retention magnets	Alpine white		116266
Surface-mounted socket Package			120503

1) Only suitable for dry rooms

2) Surcharge for special RAL colours, see general information

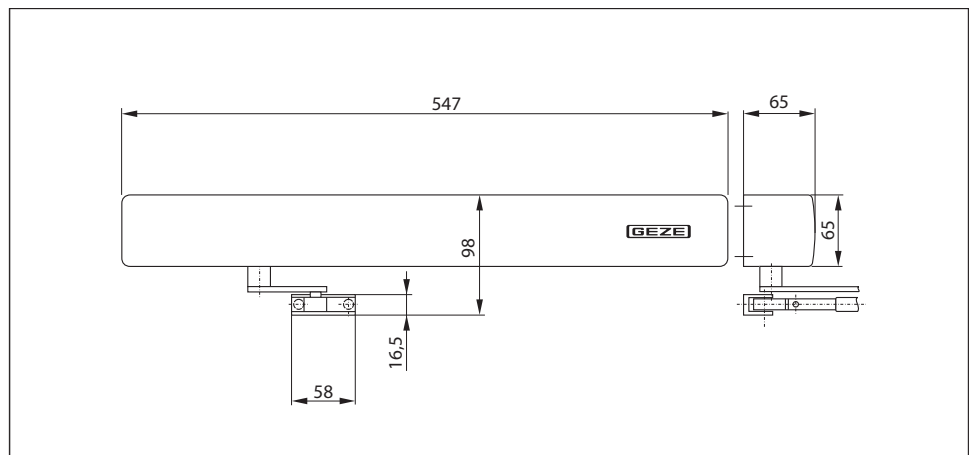
3) Not currently approved for fire and smoke doors, EN size 3, leaf width up to 950 mm

GEZE TS 4000 R

Link arm door closer for single-leaf doors with a leaf width up to 1400 mm featuring electric hold-open and smoke switch control unit

TS 4000 R overhead door closer, featuring an electric hold-open that is infinitely variable between 80° and 175° in accordance with EN 1155 and a smoke switch control unit built into the closer cover, is approved for use with left and right single-action doors with a door leaf width up to 1400 mm and for mounting on fire and smoke doors. In the event of a fire, the smoke detector is activated and the door closes automatically. The size 1-6 closing force to EN 1154, with optical size indicator, and the thermo-constant closing speed can be conveniently adjusted from the front; the latching action is adjusted by means of the link arm. Official building approval of a general nature from the DIBt (German Institute for Building Technology) (not applicable to transom mounting on the hinge side).

GEZE TS 4000 R



Application range

- For single-action doors, leaf width up to 1400 mm
- Compatible with left-hand and right-hand doors without the need for conversion
- For fire and smoke doors (door closers with mounting plate)
- Standard mounting involving transom mounting on opposite hinge side
- Transom mounting on hinge side possible with guide rail, closing force EN3, not approved for fire and smoke doors

Closer specifications

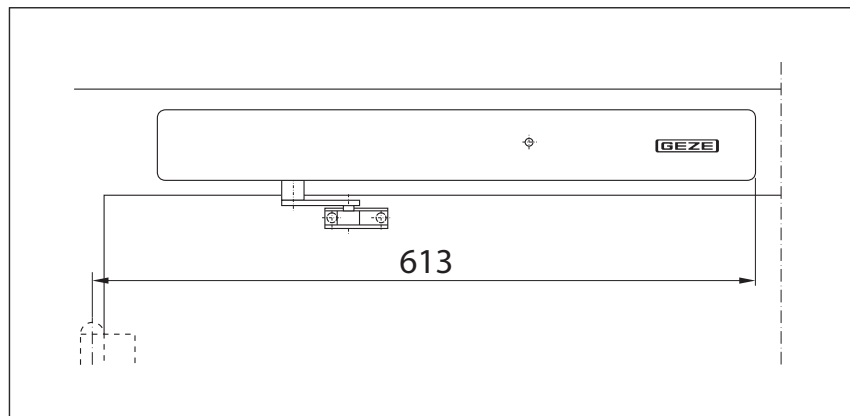
Product features	GEZE TS 4000 R KM BG closer
Closing force to EN 1154	1 - 6
Leaf width recommended up to	1400 mm
Identical version DIN-L and DIN-R	●
Supply voltage	230 V 50 Hz
Enclosure rating IP	IP 20
Product tested in acc. with	Door closer tested in acc. with EN 1154 Hold-open mechanism tested in acc. with EN 1155 Official building approval of a general nature from the DIBt (German Institute for Building Technology) for use as a hold-open system
Suitable for fire and smoke doors	●
Mounting plate with hole pattern acc. to EN 1154 Supplement 1	●
Length	547 mm
Installation depth	65 mm
Height	65 mm
Functions	
Adjustable closing force	● Infinitely variable
Adjustable closing speed	●
Adjustable latching action	● Via link arm
Integrated back check	○
Closing force adjustment position	Front
Optical closing force display	●
Safety valve featuring protection against vandalism	●
Thermo-constant valves	●
Integrated hold-open mechanism	Electric
Hold-open mechanism can be overridden	●
Integrated smoke switch	●
With visual status display	●
With soiling indicator	●
With adaption of the alarm threshold	●
Integrated power supply unit	●

● = yes

○ = no

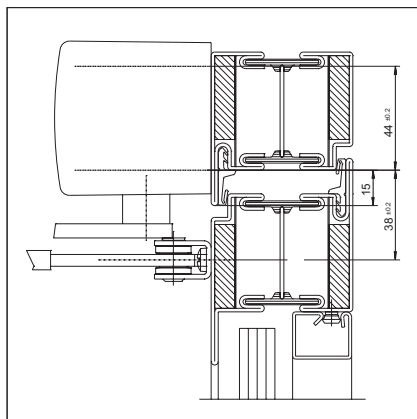
Transom mounting/opposite hinge side TS 4000 R

View

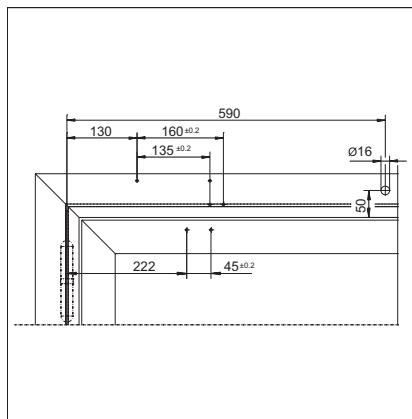


Mounting example for GEZE TS 4000 R

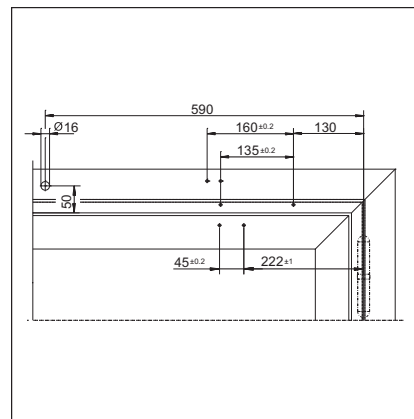
Direct mounting



Cross section = direct mounting

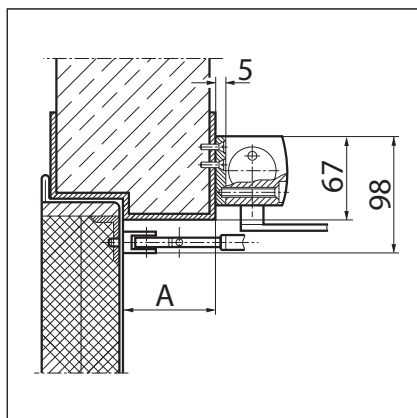


Fitting dimensions for right-hand door

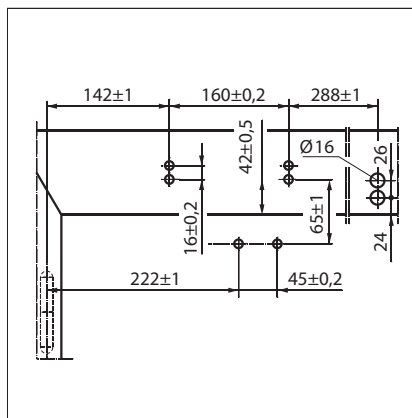


Fitting dimensions for left-hand door

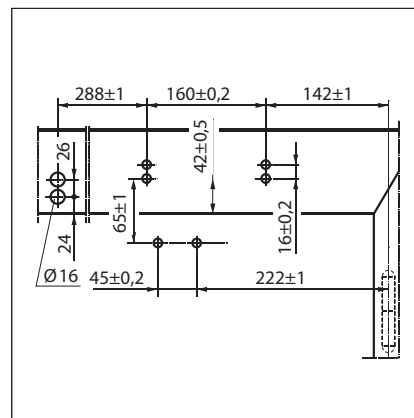
Mounting with mounting plate



Cross section = mounting with mounting plate
 A = max. 70 mm lintel depth with fire and smoke doors



Fitting dimensions for right-hand door



Fitting dimensions for left-hand door

GEZE TS 4000 R - Ordering information

Designation	Version	ID no.
GEZE TS 4000 R KM BG closer	Silver-coloured	105241
Size EN 1-6, transom mounting on opposite hinge side, featuring electric hold-open and integrated smoke switch control unit (without link arm)	Acc. to RAL ²⁾	105242
GEZE TS 4000 R KM BS closer ³⁾	Silver-coloured	105243
Size EN 1-3, transom mounting on hinge side, featuring electric hold-open and integrated smoke switch control unit (without guide rail)	Acc. to RAL ²⁾	105267
Guide rail TS 4000 E/R	Silver-coloured	102527
With lever, designed for transom mounting on hinge side	Acc. to RAL ²⁾	102530
Link arm TS 4000/2000 Extended, for transom mounting with a soffit depth of 70-170 mm	Silver-coloured	102431
	Dark bronze	102432
	White RAL 9016	102433
	Acc. to RAL ²⁾	102434
Link arm TS 4000/2000 Standard	Silver-coloured	102421
	Dark bronze	102422
	White RAL 9016	102423
	Stainless steel effect ¹⁾	102426
	Acc. to RAL ²⁾	102425
Installation material		
Spindle extension for TS 4000/TS 2000 Crown type connection	10 mm Galvanised	103548
	10 mm Black	103677
	15 mm Galvanised	103549
	15 mm Black	103678
	20 mm Galvanised	103550
	20 mm Black	103679
Door closer mounting plate For TS 5000 RFS KM/4000 R & R-IS with hole pattern acc. to DIN EN 1154 Supplement 1	Black	058808
Accessories		
GEZE smoke switch RS 5 For ceiling and lintel mounting	Silver-coloured	027052
	Dark bronze	028939
	White RAL 9016	028940
	Stainless steel effect ¹⁾	028942
	Acc. to RAL ²⁾	028941
GEZE circuit breaker Concealed version, for manual release of electrically controlled door closers and retention magnets	Alpine white	116266
Surface-mounted socket Package		120503

1) Only suitable for dry rooms

2) Surcharge for special RAL colours, see general information

3) Not currently approved for fire and smoke doors, EN size 3, leaf width up to 950 mm

GEZE TS 4000 EFS

Link arm door closer for single-leaf doors with a leaf width up to 1400 mm featuring electric freeswing-function

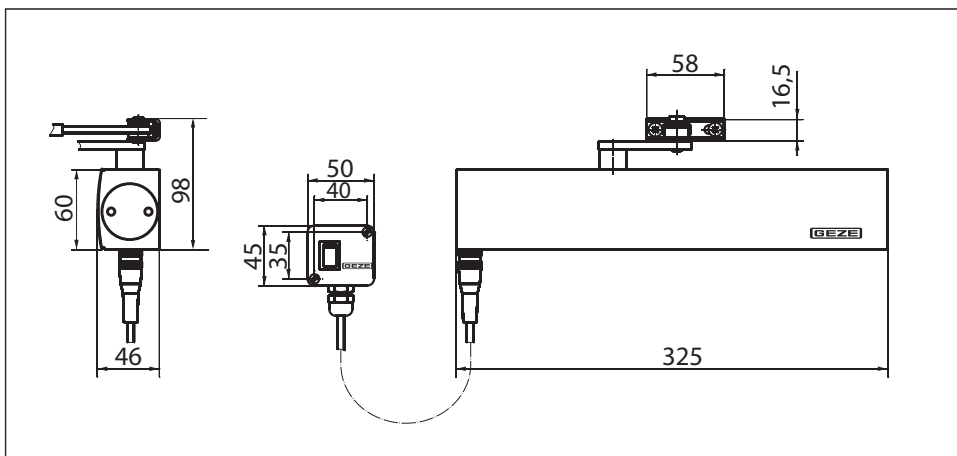
TS 4000 EFS (24 V DC) overhead door closer for single-leaf doors features what is known as a "freeswing" function. After the freeswing function has been activated by opening the door once by an angle of approximately 90° (e.g. in the morning), users can pass through the door in either direction without having to press very hard on the door at all. This function is particularly useful in retirement homes or hospitals, for example. TS 4000 EFS features an electric hold-open that is infinitely variable between 80° and 180° in accordance with EN 1155 to support the freeswing function. It is approved for use with left and right single-action doors with a door leaf width up to 1400 mm and for mounting on fire and smoke doors. The size 1-6 closing force to EN 1154, with optical size indicator, and the thermo-constant closing speed can be conveniently adjusted from the front; the latching action is adjusted by means of the link arm.

Please note: Due to the guideline of hold-open systems of the DIBt (German Institution for Construction Technology) a circuit breaker is imperatively stipulated when using a door closer with freeswing function.

Special version:

- GEZE TS 4000 EFS/transom mounting on opposite hinge side 24 V DC

GEZE TS 4000 EFS



Application range

- For single-action doors, leaf width up to 1400 mm
- Compatible with left-hand and right-hand doors without the need for conversion
- For fire and smoke doors (door closers with mounting plate)
- Standard mounting on door leaf, hinge side; transom mounting on opposite hinge side also possible
- Transom mounting on hinge side possible with freeswing guide rail, closing force EN3, not approved for fire and smoke doors

Closer specifications

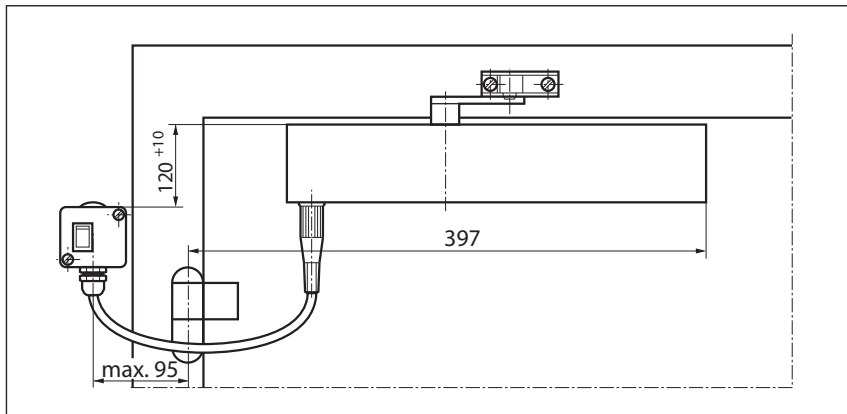
Product features	GEZE TS 4000 EFS closer
Closing force to EN 1154	1 - 6
Leaf width recommended up to	1400 mm
Identical version DIN-L and DIN-R	●
Supply voltage	24 V DC
Enclosure rating IP	IP 43
Product tested in acc. with	Door closer tested in acc. with EN 1154 Hold-open mechanism tested in acc. with EN 1155
Suitable for fire and smoke doors	●
Mounting plate with hole pattern acc. to EN 1154 Supplement 1	●
Length	325 mm
Installation depth	46 mm
Height	60 mm
Functions	
Adjustable closing force	● Infinitely variable
Adjustable closing speed	●
Adjustable latching action	● Via link arm
Integrated back check	○
Closing force adjustment position	Front
Optical closing force display	●
Safety valve featuring protection against vandalism	●
Thermo-constant valves	●
Integrated hold-open mechanism	Electric
Freeswing range	80°-175°

● = yes

○ = no

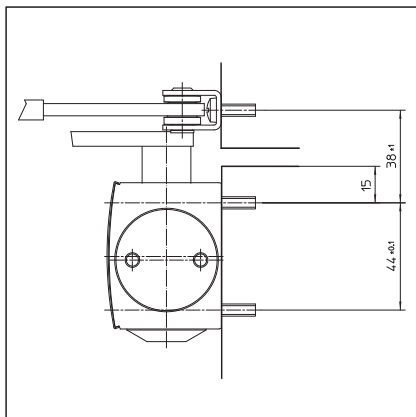
Door leaf mounting/hinge side TS 4000 EFS

View

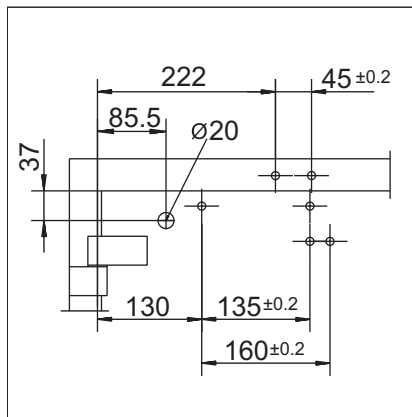


Mounting example for GEZE TS 4000 EFS

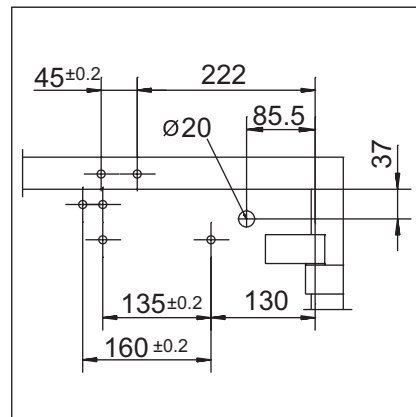
Direct mounting



Cross section = direct mounting

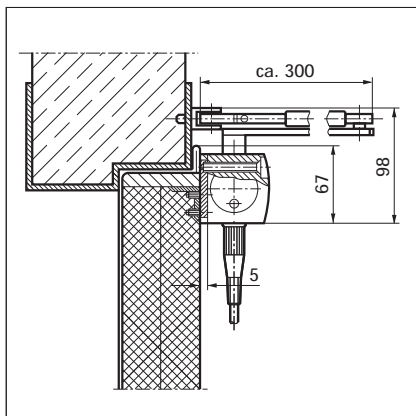


Fitting dimensions for left-hand door

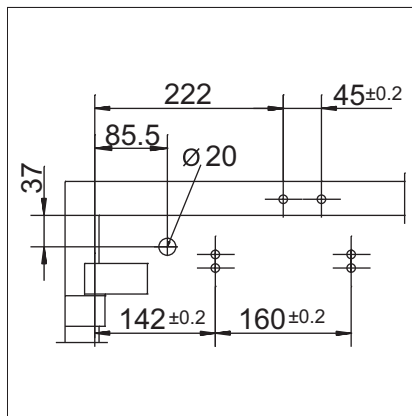


Fitting dimensions for right-hand door

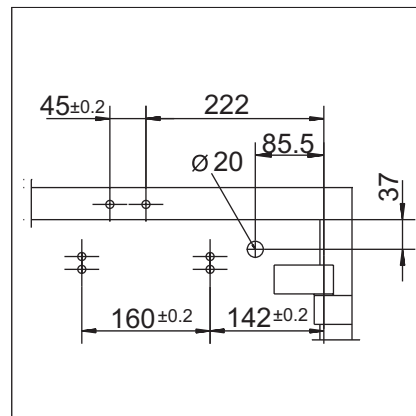
Mounting with mounting plate



Cross section = mounting with mounting plate



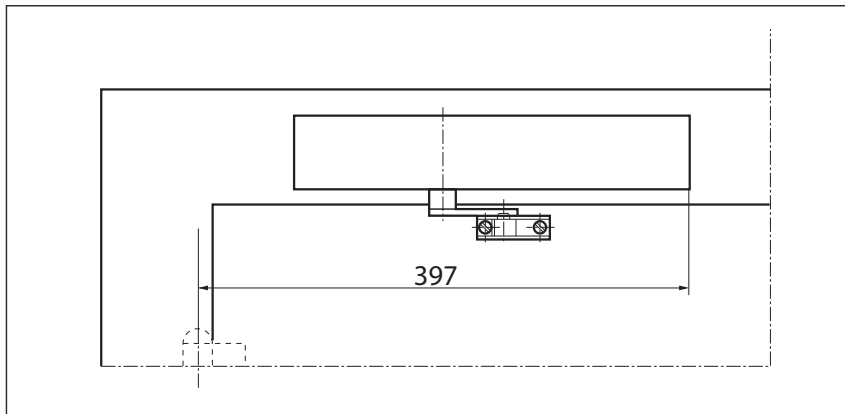
Fitting dimensions for left-hand door



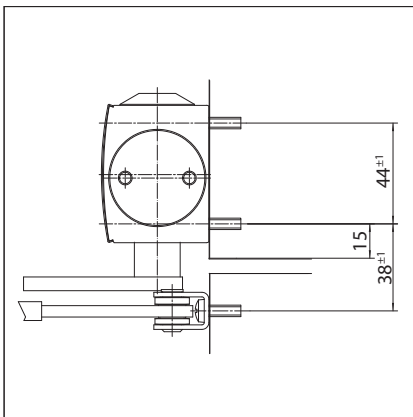
Fitting dimensions for right-hand door

Transom mounting/opposite hinge side TS 4000 EFS

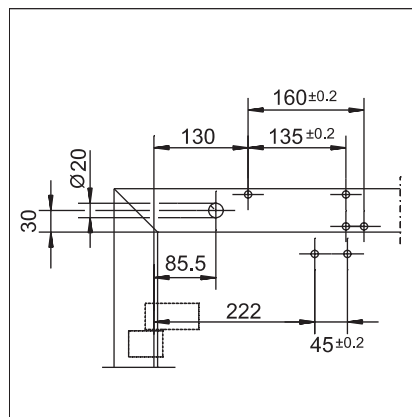
View



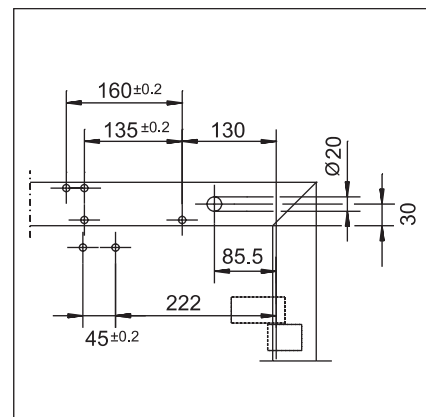
Mounting example for GEZE TS 4000 EFS

Direct mounting

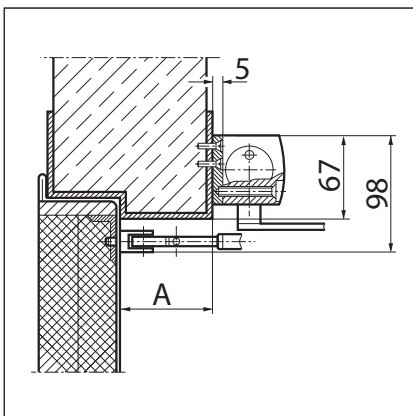
Cross section = direct mounting



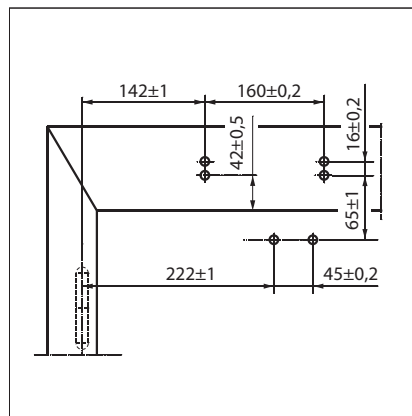
Fitting dimensions for right-hand door



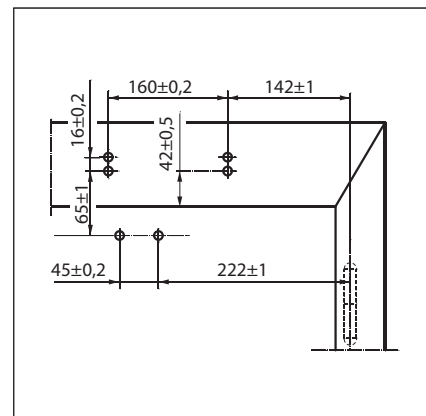
Fitting dimensions for left-hand door

Mounting with mounting plate

Cross section = mounting with mounting plate
 A = max. 70 mm lintel depth with fire and smoke doors



Fitting dimensions for right-hand door



Fitting dimensions for left-hand door

GEZE TS 4000 EFS - Ordering information

Designation	Version	ID no.
GEZE TS 4000 EFS closer	Silver-coloured	105211
Size EN 1-6, door leaf installation on hinge side, featuring electric hold-open for freeswing function and connector box (without freeswing arm)	Acc. to RAL	105212
GEZE TS 4000 EFS KM BG closer	Silver-coloured	105213
Size EN 1-6, transom mounting on opposite hinge side, featuring electric hold-open for freeswing function (without freeswing arm)	Acc. to RAL	105214
GEZE TS 4000 EFS KM BS closer ³⁾	Silver-coloured	105235
Size EN 1-3, transom mounting on hinge side, featuring electric hold-open for freeswing function (without freeswing guide rail)	Acc. to RAL	105236
Guide rail TS 4000 EFS/RFS ³⁾	Silver-coloured	106844
With freeswing function and lever, designed for transom mounting on hinge side	Acc. to RAL	106466
Link arm TS 4000 EFS/RFS	Silver-coloured	106460
With freeswing function	Acc. to RAL ²⁾	106462
Installation material		
Spindle extension for TS 4000/TS 2000 Crown type connection	10 mm Galvanised	103548
	10 mm Black	103677
	15 mm Galvanised	103549
	15 mm Black	103678
	20 mm Galvanised	103550
	20 mm Black	103679
Door closer drilling template For TS 5000/4000/3000/2000		053134
Link arm mounting plate For TS 4000/2000, with narrow rebates	Silver-coloured	057109
Link arm mounting plate For TS 4000/2000, with parallel arm mounting	Acc. to RAL ²⁾	082506
	Silver-coloured	053318
	Dark bronze	053319
Door closer mounting plate For TS 5000 EFS/RFS/EHY / 4000 E with hole pattern acc. to DIN EN 1154 Supplement 1	Acc. to RAL ²⁾	027460
	Silver-coloured	059107
Accessories	Acc. to RAL ²⁾	100044
	Silver-coloured	099851
GEZE smoke switch control unit RSZ 6 Approved for all GEZE hold-open mechanisms	Dark bronze	099857
	White RAL 9016	099858
	Stainless steel effect ¹⁾	099856
	Acc. to RAL ²⁾	099859
	Silver-coloured	027052
GEZE smoke switch RS 5 For ceiling and lintel mounting	Dark bronze	028939
	White RAL 9016	028940
	Stainless steel effect ¹⁾	028942
	Acc. to RAL ²⁾	028941
	Silver-coloured	116266
GEZE circuit breaker Concealed version, for manual release of electrically controlled door closers and retention magnets	Alpine white	116266
Surface-mounted socket Package		120503

1) Only suitable for dry rooms

2) Surcharge for special RAL colours, see general information

3) Not approved for fire and smoke doors in Germany

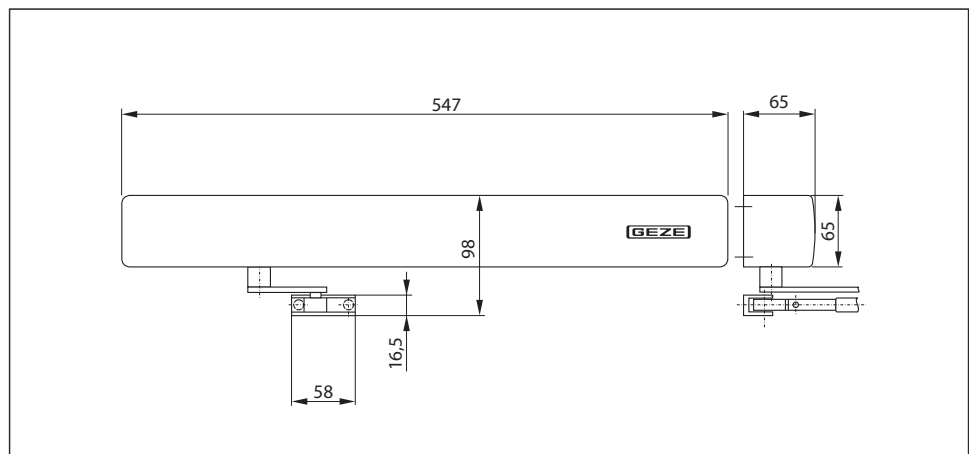
GEZE TS 4000 RFS

Link arm door closer for single-leaf doors with a leaf width up to 1400 mm featuring electric freeswing function and smoke switch control unit

TS 4000 RFS overhead door closer for single-leaf doors features what is known as a "freeswing" function. After the freeswing function has been activated by opening the door once by an angle of approximately 90° (e.g. in the morning), users can pass through the door in either direction without having to press very hard on the door at all. This function is particularly useful in retirement homes or hospitals, for example. TS 4000 RFS features an infinitely variable electric hold-open in accordance with EN 1155 and a smoke switch control unit built into the closer cover. It is approved for use with left and right single-action doors with a door leaf width up to 1400 mm and for mounting on fire and smoke doors. The size 1-6 closing force to EN 1154, with optical size indicator, and the thermo-constant closing speed can be conveniently adjusted from the front; the latching action is adjusted by means of the link arm. The product has been granted official building approval of a general nature by the DIBt (German Institute for Building Technology) (EN 1155 and DIBt approval not applicable to transom mounting on the hinge side).

Please note: Due to the guideline of hold-open systems of the DIBt (German Institution for Construction Technology) a circuit breaker is imperatively stipulated when using a door closer with freeswing function.

GEZE TS 4000 RFS



Application range

- For single-action doors, leaf width up to 1400 mm
- Compatible with left-hand and right-hand doors without the need for conversion
- For fire and smoke doors (door closers with mounting plate)
- Standard mounting involving transom mounting on opposite hinge side
- Transom mounting on hinge side possible with freeswing guide rail, closing force EN3, not approved for fire and smoke doors

Closer specifications

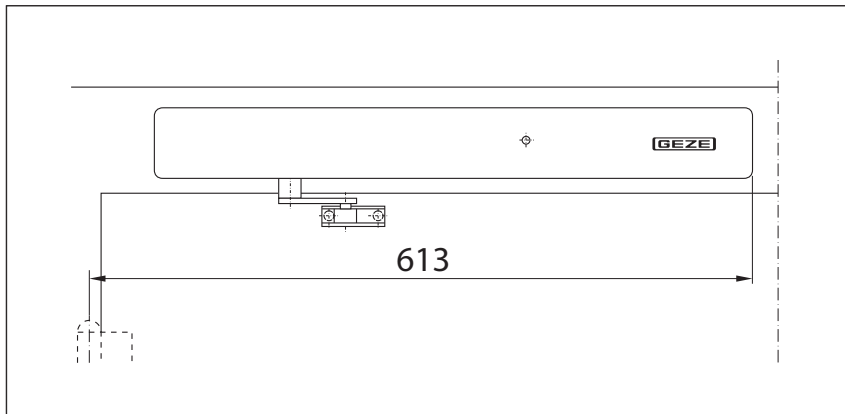
Product features	GEZE TS 4000 RFS KM BG closer
Closing force to EN 1154	1 - 6
Leaf width recommended up to	1400 mm
Identical version DIN-L and DIN-R	●
Supply voltage	230 V 50 Hz
Enclosure rating IP	IP 20
Product tested in acc. with	Door closer tested in acc. with EN 1154 Hold-open mechanism tested in acc. with EN 1155 Official building approval of a general nature from the DIBt (German Institute for Building Technology) for use as a hold-open system
Suitable for fire and smoke doors	●
Mounting plate with hole pattern acc. to EN 1154 Supplement 1	●
Length	547 mm
Installation depth	65 mm
Height	65 mm
Functions	
Adjustable closing force	● Infinitely variable
Adjustable closing speed	●
Adjustable latching action	● Via link arm
Integrated back check	○
Closing force adjustment position	Front
Optical closing force display	●
Safety valve featuring protection against vandalism	●
Thermo-constant valves	●
Integrated hold-open mechanism	Electric
Integrated smoke switch	●
With visual status display	●
With soiling indicator	●
With adaption of the alarm threshold	●
Integrated power supply unit	●
Freeswing range	80°-175°

● = yes

○ = no

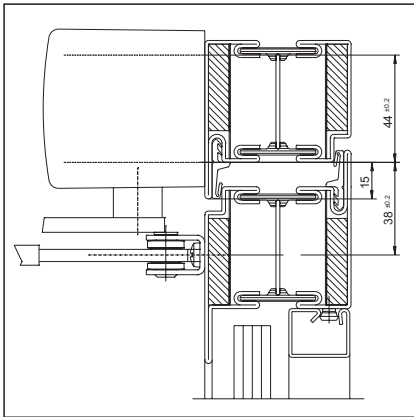
Transom mounting/opposite hinge side TS 4000 RFS

View

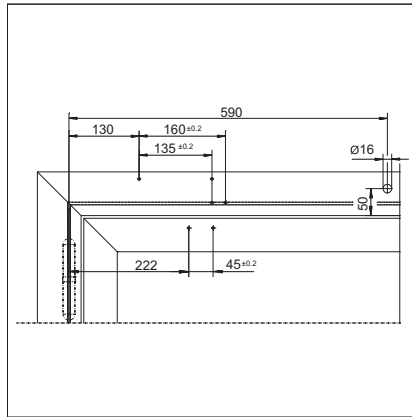


Mounting example for GEZE TS 4000 RFS

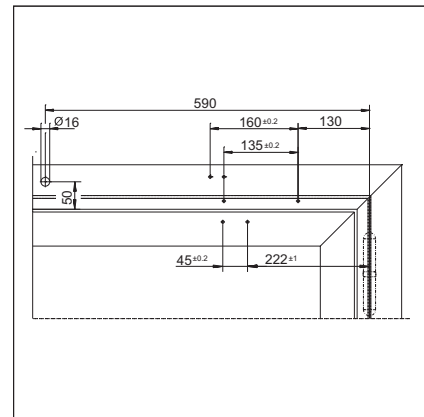
Direct mounting



Cross section = direct mounting

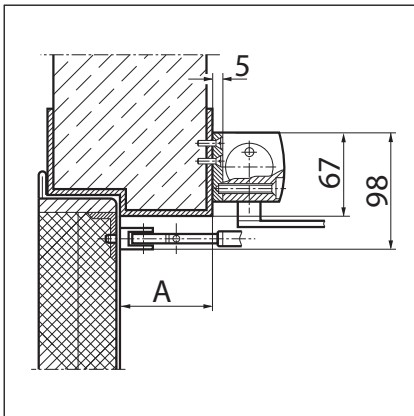
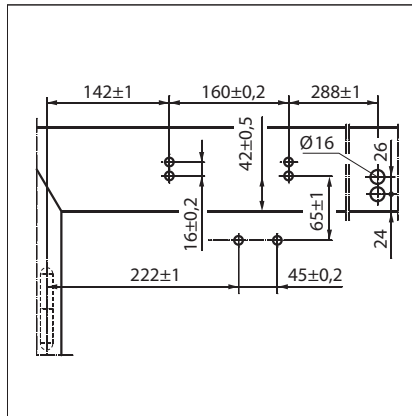


Fitting dimensions for right-hand door

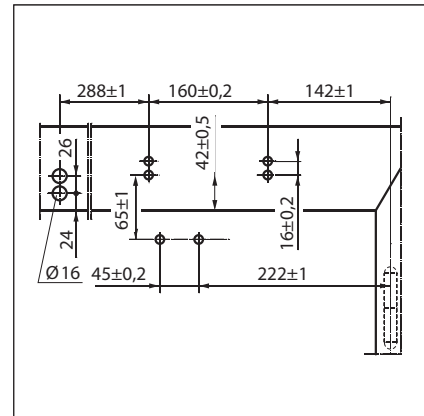


Fitting dimensions for left-hand door

Mounting with mounting plate

Cross section = mounting with mounting plate,
A = max. 70 mm lintel depth with fire and
smoke doors

Fitting dimensions for right-hand door



Fitting dimensions for left-hand door

GEZE TS 4000 RFS - Ordering information

Designation	Version	ID no.
GEZE TS 4000 RFS KM BG closer Size EN 1-6, transom mounting on opposite hinge side, featuring electric hold-open for freeswing function and integrated smoke switch control unit (without freeswing arm)	Silver-coloured	105241
	Acc. to RAL	105242
GEZE TS 4000 RFS KM BS closer ³⁾ Size EN 1-3, transom mounting on hinge side, featuring electric hold-open for freeswing function and integrated smoke switch control unit (without freeswing guide rail)	Silver-coloured	105243
	Acc. to RAL	105267
Guide rail TS 4000 EFS/RFS With freeswing function and lever, designed for transom mounting on hinge side	Silver-coloured	106844
	Acc. to RAL	106466
Link arm TS 4000 EFS/RFS With freeswing function	Silver-coloured	106460
	Acc. to RAL ²⁾	106462
Installation material		
Spindle extension for TS 4000/TS 2000 Crown type connection	10 mm Galvanised	103548
	10 mm Black	103677
	15 mm Galvanised	103549
	15 mm Black	103678
	20 mm Galvanised	103550
	20 mm Black	103679
Door closer mounting plate For TS 5000 RFS KM/4000 R & R-IS with hole pattern acc. to DIN EN 1154 Supplement 1	Black	058808
Accessories		
GEZE smoke switch RS 5 For ceiling and lintel mounting	Silver-coloured	027052
	Dark bronze	028939
	White RAL 9016	028940
	Stainless steel effect ¹⁾	028942
	Acc. to RAL ²⁾	028941
GEZE circuit breaker Concealed version, for manual release of electrically controlled door closers and retention magnets	Alpine white	116266
Surface-mounted socket Package		120503

1) Only suitable for dry rooms

2) Surcharge for special RAL colours, see general information

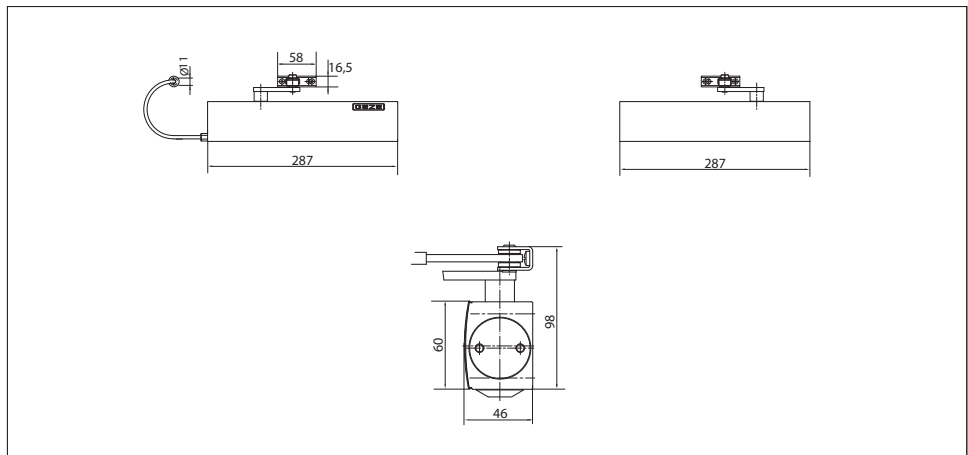
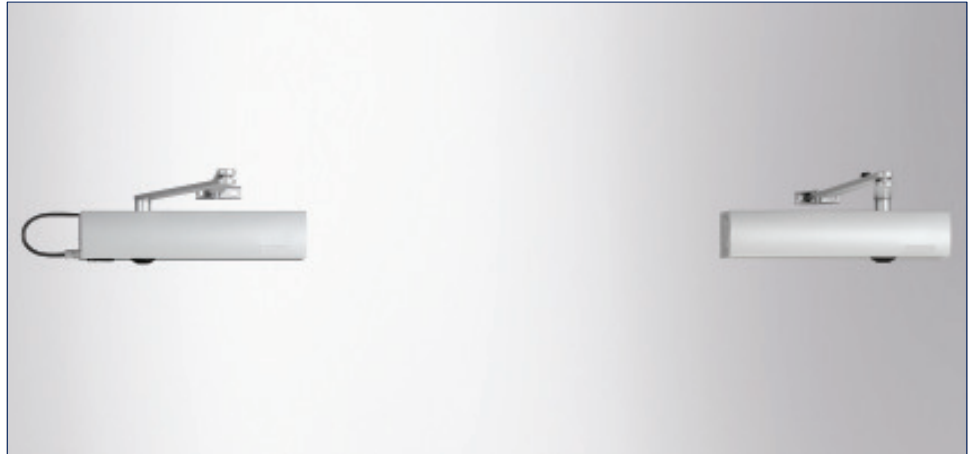
3) Not approved for fire and smoke doors, EN size 3, leaf width up to 950 mm

GEZE TS 4000 IS

Link arm door closer system for double-leaf doors with a hinge clearance up to 2800 mm featuring integrated closing sequence control

TS 4000 IS overhead door closer system, featuring integrated hydraulic closing sequence control, is approved for mounting on fire and smoke doors. The integrated closing sequence control, featuring protection against vandalism, ensures that both door leaves close in the correct order when used with double-leaf doors. When the door closes, the moving leaf remains in the waiting position until the fixed leaf is closed and until the moving leaf is released by the closing sequence control. The size 1-6 closing force to EN 1154, with optical size indicator, and the closing speed can be adjusted from the front. The latching action is adjusted by means of the link arm.

GEZE TS 4000 IS



Application range

- For double-leaf doors, leaf width up to 1400 mm
- Compatible with left-hand and right-hand doors without the need for conversion
- For fire and smoke doors (door closers with mounting plate)
- Standard mounting on door leaf, hinge side; transom mounting on opposite hinge side also possible

Closer specifications

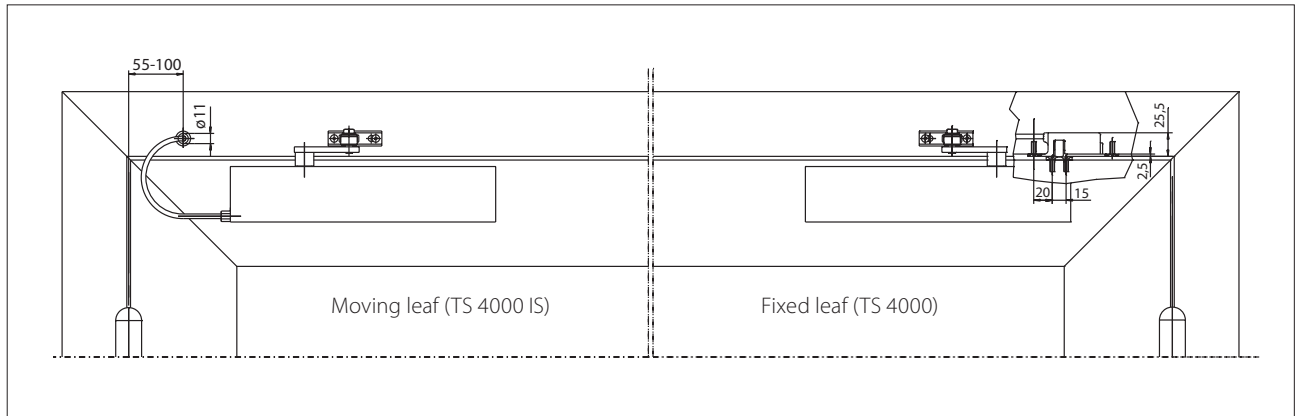
Product features	GEZE TS 4000 IS closer	GEZE TS 4000 closer
Closing force to EN 1154	1 - 6	
Leaf width recommended up to	1400 mm	
Identical version DIN-L and DIN-R	●	●
Product tested in acc. with	Door closer tested in acc. with EN 1154 Door closing sequence selector tested in acc. with EN 1158	Door closer tested in acc. with EN 1154
Suitable for fire and smoke doors	●	●
Mounting plate with hole pattern acc. to EN 1154 Supplement 1	●	●
Length	287 mm	
Installation depth	46 mm	
Height	60 mm	
Functions		
Adjustable closing force	● Infinitely variable	
Adjustable closing speed	●	●
Adjustable latching action	● Via link arm	
Integrated back check	○	● Hydraulically adjustable
Closing force adjustment position	Front	
Optical closing force display	●	●
Safety valve featuring protection against vandalism	●	●
Thermo-constant valve	●	●
Integrated closing sequence control	●	

● = yes

○ = no

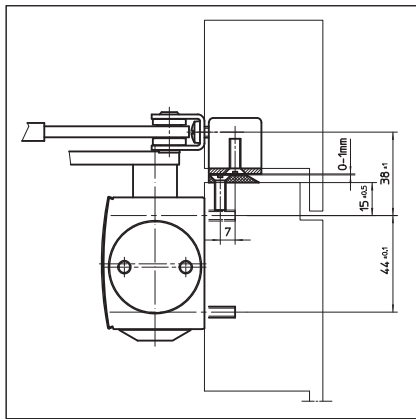
Door leaf mounting/hinge side TS 4000 IS

View

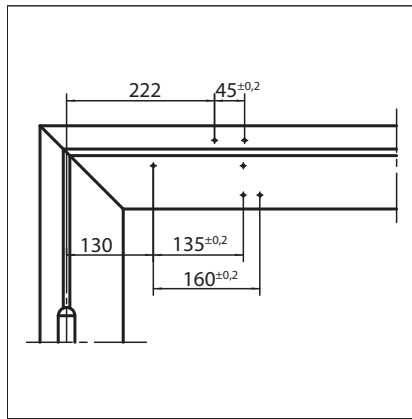


Mounting example for GEZE TS 4000 IS

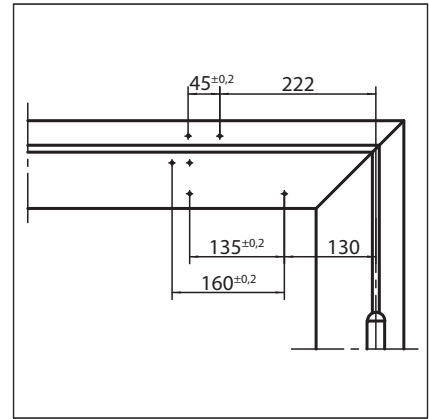
Direct mounting



Cross section = direct mounting

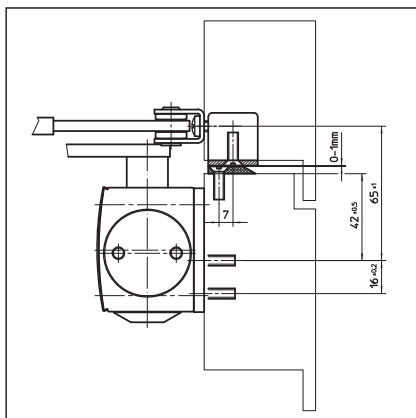


Fitting dimensions for left-hand door

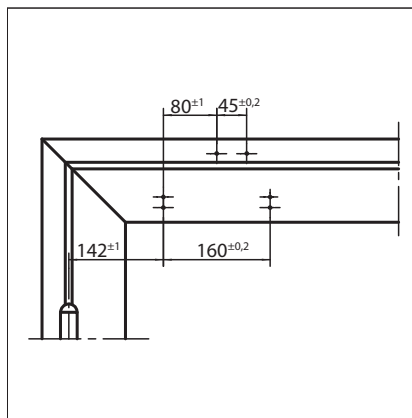


Fitting dimensions for right-hand door

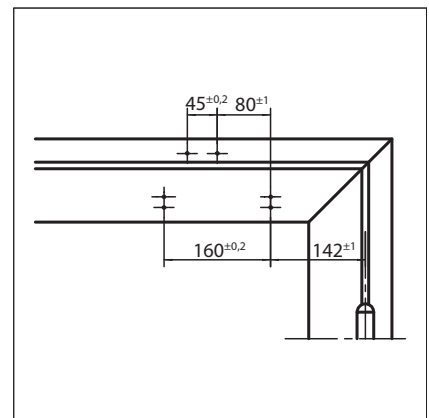
Mounting with mounting plate



Cross section = mounting with mounting plate

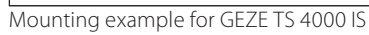


Fitting dimensions for left-hand door



Fitting dimensions for right-hand door

View



Technical drawing of a roof structure showing dimensions and reinforcement details. The drawing includes a side elevation and a cross-section. Key dimensions and labels are as follows:

- Overall width: 130
- Reinforcement spacing (top): 160 $\phi 2$
- Reinforcement spacing (bottom): 135 $\phi 2$
- Reinforcement spacing (middle): 45 $\phi 2$
- Reinforcement spacing (bottom right): 222
- Reinforcement spacing (bottom left): 45 $\phi 2$
- Reinforcement spacing (middle right): 135 $\phi 2$
- Reinforcement spacing (middle left): 160 $\phi 2$
- Reinforcement spacing (bottom right): 130

Technical drawing of a building facade, showing a symmetrical layout. The drawing includes dimensions and structural details:

- Overall width: 142'-1"
- Central section width: 160'-0.2"
- Side section width: 142'-1"
- Central section width: 160'-0.2"
- Side section width: 142'-1"
- Internal dimensions: 222' and 45'-0.2"
- Structural details: Arrows indicating vertical and horizontal forces, and a central vertical line.

Technical drawing of a mechanical part, likely a bracket or support, showing dimensions and tolerances. The drawing includes a side view and a top view. Key dimensions are: overall width 85 ± 0.2 , overall height $24 + 0.5$, mounting hole diameter M5, and a central slot width of $75 + 2$. The part has a central slot and two mounting holes.

GEZE SYSTEM TS 4000 / TS 2000 / TS 1500

GEZE TS 4000 IS - Ordering information

Designation	Version	ID no.
GEZE TS 4000 IS closer Size EN 1-6 with integrated closing sequence control (without release mechanism and link arm)	Silver-coloured	102798
	Dark bronze	102799
	White RAL 9016	102801
	Acc. to RAL ²⁾	102802
GEZE TS 4000 closer Size EN 1-6 with back check (without link arm)	Silver-coloured	102789
	Dark bronze	102790
	White RAL 9016	102791
	Acc. to RAL ²⁾	102792
Link arm TS 4000/2000 Extended, for transom mounting with a soffit depth of 70-170 mm	Silver-coloured	102431
	Dark bronze	102432
	White RAL 9016	102433
	Acc. to RAL ²⁾	102434
Link arm TS 4000/2000 Standard	Silver-coloured	102421
	Dark bronze	102422
	White RAL 9016	102423
	Stainless steel effect ¹⁾	102426
	Acc. to RAL ²⁾	102425
Installation material		
Spindle extension for TS 4000/TS 2000 Crown type connection	10 mm Galvanised	103548
	10 mm Black	103677
	15 mm Galvanised	103549
	15 mm Black	103678
	20 mm Galvanised	103550
	20 mm Black	103679
Door closer drilling template For TS 5000/4000/3000/2000		053134
Glass clamping plate for door closer For TS 5000/TS 4000	Silver-coloured	057126
	Dark bronze	057127
	White RAL 9016	009491
	Acc. to RAL ²⁾	009494
All-glass door mounting and counter plate For TS 5000/TS 4000	Silver-coloured	007923
	Dark bronze	007924
	Acc. to RAL ²⁾	007926
Link arm mounting plate For TS 4000/2000, with narrow rebates	Silver-coloured	057109
	Acc. to RAL ²⁾	082506
Link arm mounting plate For TS 4000/2000, with parallel arm mounting	Silver-coloured	053318
	Dark bronze	053319
	Acc. to RAL ²⁾	027460
Door closer mounting plate For TS 5000/4000 with hole pattern acc. to DIN EN 1154 Supplement 1	Silver-coloured	049185
	Dark bronze	052351
	White RAL 9016	068627
	Galvanised	057956
	Acc. to RAL ²⁾	029176
Lintel casing bracket for transom mounting opposite hinge side For TS 5000/TS 4000	Silver-coloured	049240
	Dark bronze	052352
	Acc. to RAL ²⁾	104451
Accessories		
Closing sequence control release mechanism For TS 4000 IS / E-IS	No.1 hinge clearance 1200-1500 mm	058306
	No.2 hinge clearance 1500-1800 mm	058307
	No.3 hinge clearance 1800-2100 mm	058308
	No.4 hinge clearance 2100-2400 mm	058309
	No.5 hinge clearance 2400-2700 mm	058310
	No.6 hinge clearance in excess of 2700 mm	058311

1) Only suitable for dry rooms

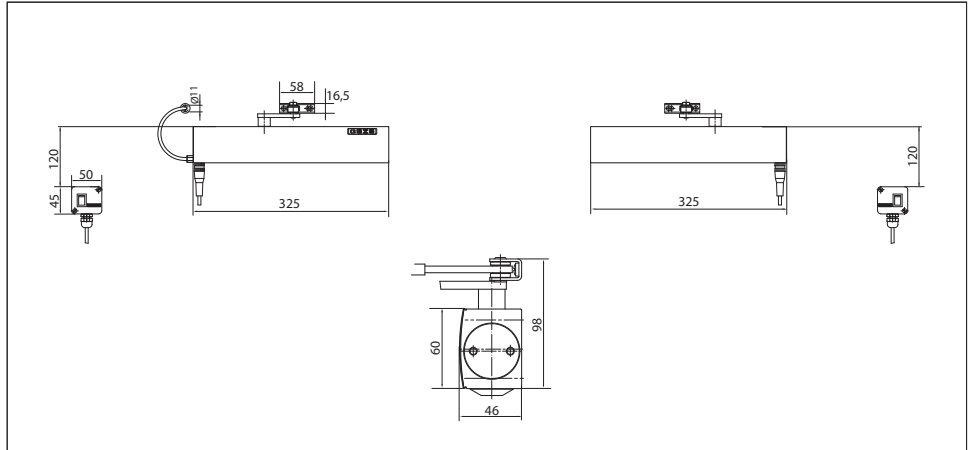
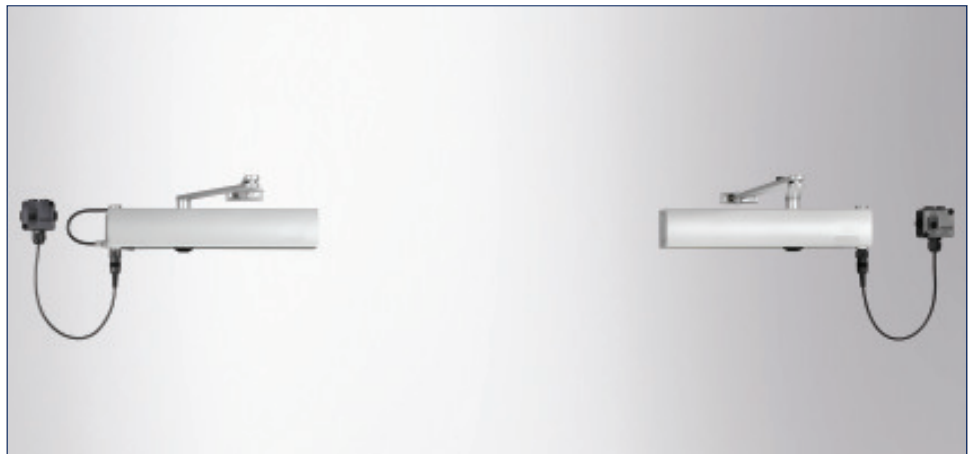
2) Surcharge for special RAL colours, see general information

GEZE TS 4000 E-IS

Link arm door closer system for double-leaf doors with a hinge clearance up to 2800 mm featuring integrated closing sequence control and electric hold-open

TS 4000 E-IS (24 V DC) overhead door closer system, featuring integrated hydraulic closing sequence control and electric hold-open, is approved for mounting on fire and smoke doors. The integrated closing sequence control, featuring protection against vandalism, ensures that both door leaves close in the correct order when used with double-leaf doors. When the door closes, the moving leaf remains in the waiting position until the fixed leaf is closed and until the moving leaf is released by the closing sequence control. The electric hold-open is infinitely variable between 80° and 175° in accordance with EN 1155. The size 1-6 closing force to EN 1154, with optical size indicator, and the closing speed can be adjusted from the front. The latching action is adjusted by means of the rod assembly.

GEZE TS 4000 E-IS



Application range

- For double-leaf doors, leaf width up to 1400 mm
- Compatible with left-hand and right-hand doors without the need for conversion
- For fire and smoke doors (door closers with mounting plate)
- Standard mounting on door leaf, hinge side; transom mounting on opposite hinge side also possible

GEZE SYSTEM TS 4000 / TS 2000 / TS 1500

Closer specifications

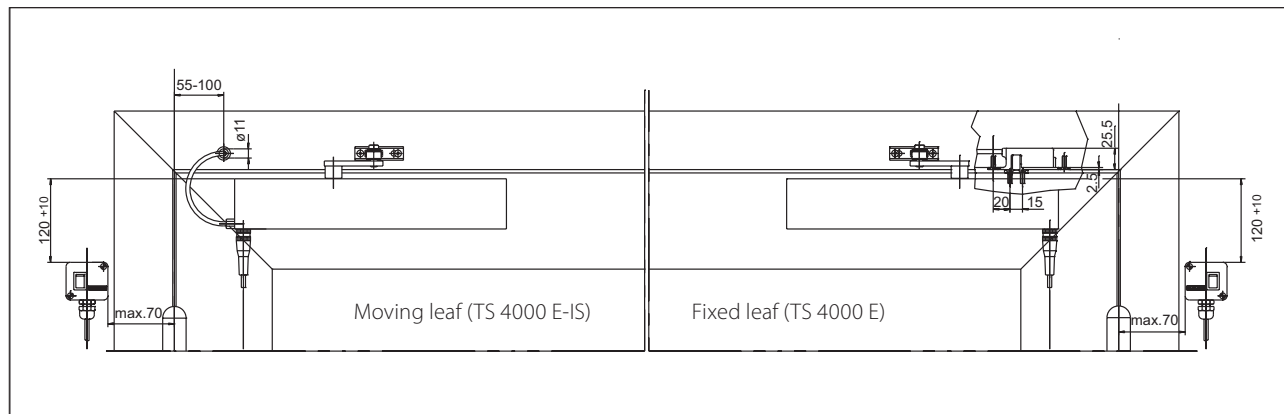
Product features	GEZE TS 4000 E-IS closer	GEZE TS 4000 E closer
Closing force to EN 1154	1 - 6	
Leaf width recommended up to	1400 mm	
Identical version DIN-L and DIN-R	●	●
Supply voltage	24 V DC	
Enclosure rating IP	IP 43	
Product tested in acc. with	Door closer tested in acc. with EN 1154 Hold-open mechanism tested in acc. with EN 1155 Door closing sequence selector tested in acc. with EN 1158	Door closer tested in acc. with EN 1154 Hold-open mechanism tested in acc. with EN 1155
Suitable for fire and smoke doors	●	●
Mounting plate with hole pattern acc. to EN 1154 Supplement 1	●	●
Length	325 mm	
Installation depth	46 mm	
Height	60 mm	
Functions		
Adjustable closing force	● Infinitely variable	
Adjustable closing speed	●	●
Adjustable latching action	● Via link arm	
Integrated back check	○	
Closing force adjustment position	Front	
Optical closing force display	●	●
Safety valve featuring protection against vandalism	●	●
Thermo-constant valves	●	●
Integrated closing sequence control	●	
Integrated hold-open mechanism	Electric	
Hold-open mechanism can be overridden	●	●
Hold-open angle	80°-175°	

● = yes

○ = no

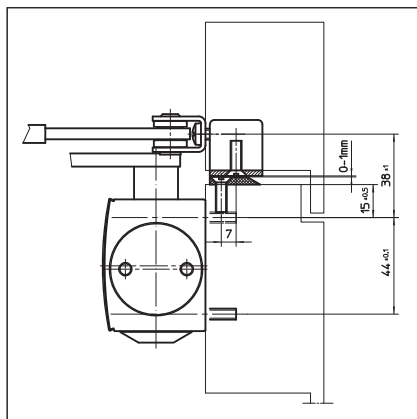
Door leaf mounting/hinge side TS 4000 E-IS

View

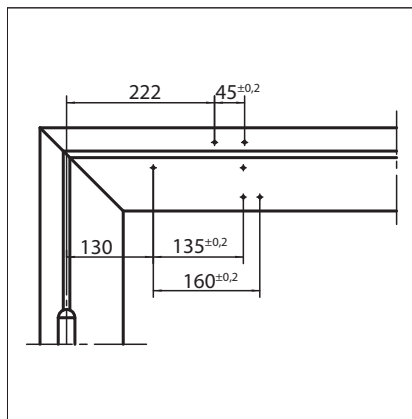


Mounting example for GEZE TS 4000 E-IS

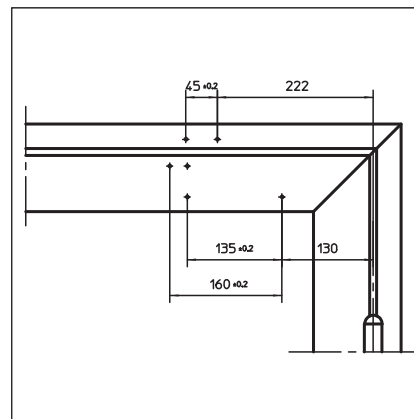
Direct mounting



Cross section = direct mounting

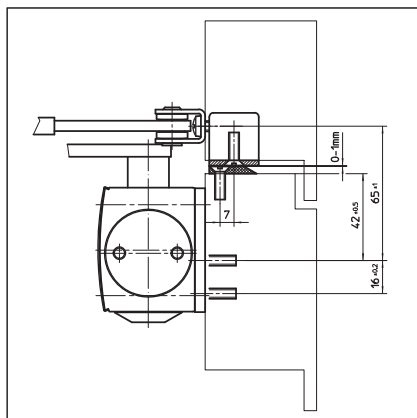


Fitting dimensions for left-hand door

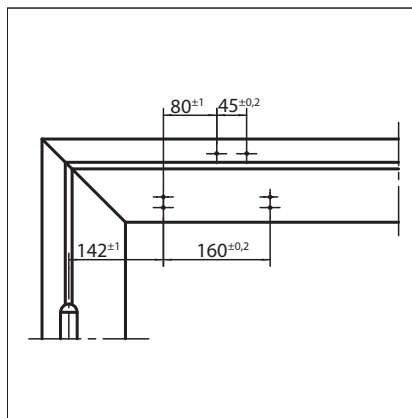


Fitting dimensions for right-hand door

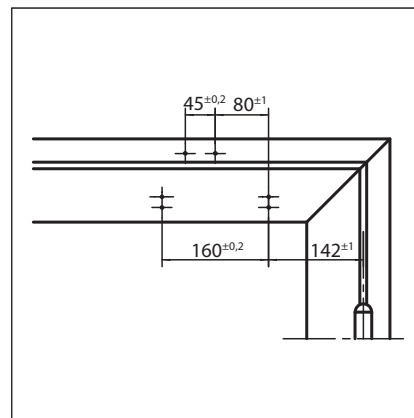
Mounting with mounting plate



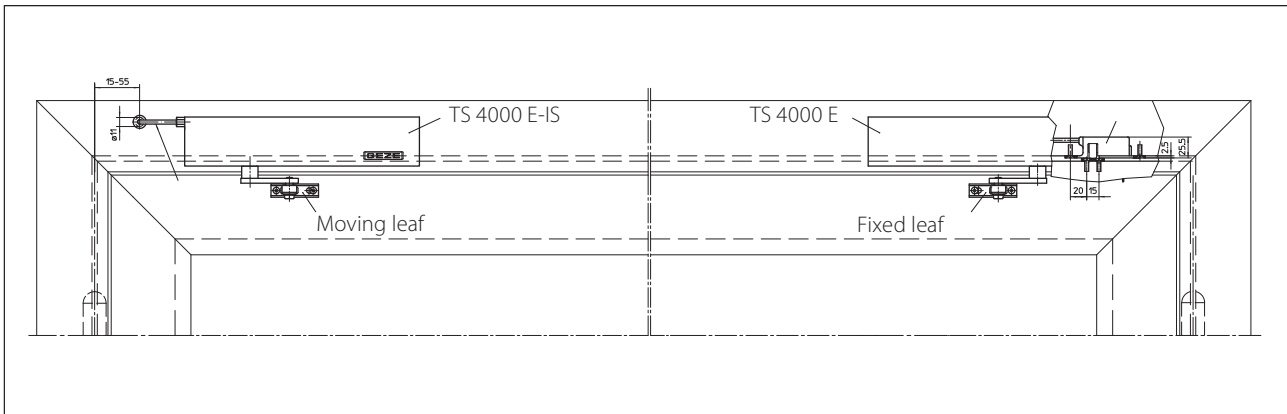
Cross section = mounting with mounting plate



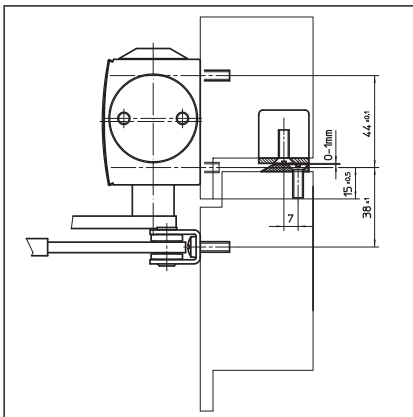
Fitting dimensions for left-hand door



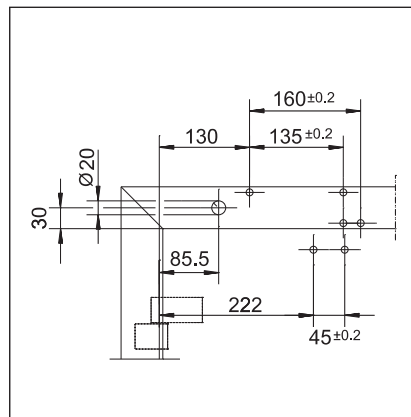
Fitting dimensions for right-hand door

Transom mounting/opposite hinge side TS 4000 E-IS**View**

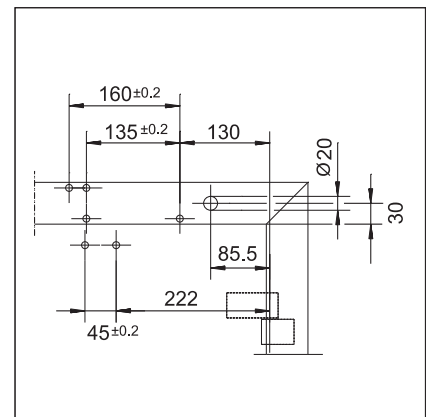
Mounting example for GEZE TS 4000 E-IS

Direct mounting

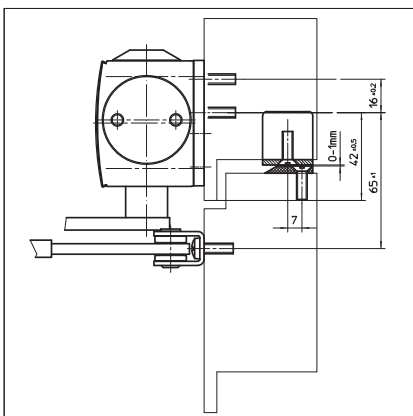
Cross section = direct mounting



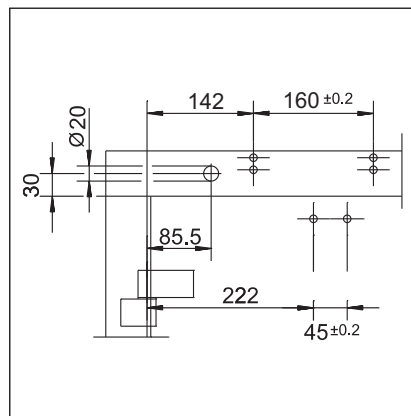
Fitting dimensions for right-hand door



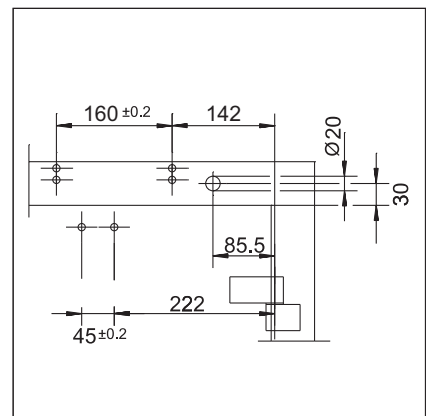
Fitting dimensions for left-hand door

Mounting with mounting plate

Cross section = mounting with mounting plate



Fitting dimensions for right-hand door



Fitting dimensions for left-hand door

GEZE TS 4000 E-IS - Ordering information

Designation	Version	ID no.	
GEZE TS 4000 E closer	Silver-coloured	105211	
Size EN 1-6, door leaf installation on hinge side, featuring electric hold-open and connector box (without link arm)	Acc. to RAL ²⁾	105212	
GEZE TS 4000 E KM BG closer	Silver-coloured	105213	
Size EN 1-6, transom mounting on opposite hinge side, featuring electric hold-open (without link arm)	Acc. to RAL ²⁾	105214	
GEZE TS 4000 E-IS closer	Silver-coloured	105237	
Size EN 1-6, door leaf installation on hinge side, featuring electric hold-open, connector box, integrated closing sequence control and mounting plate (without release mechanism and link arm)	Acc. to RAL ²⁾	105238	
GEZE TS 4000 E-IS KM BG closer	Silver-coloured	105239	
Size EN 1-6, transom mounting on opposite hinge side, featuring electric hold-open, integrated closing sequence control and mounting plate (without link arm and connector box)	Acc. to RAL ²⁾	105240	
Link arm TS 4000/2000 Extended, for transom mounting with a soffit depth of 70-170 mm	Silver-coloured	102431	
	Dark bronze	102432	
	White RAL 9016	102433	
	Acc. to RAL ²⁾	102434	
Link arm TS 4000/2000 Standard	Silver-coloured	102421	
	Dark bronze	102422	
	White RAL 9016	102423	
	Stainless steel effect ¹⁾	102426	
	Acc. to RAL ²⁾	102425	
Installation material			
Spindle extension for TS 4000/TS 2000 Crown type connection	10 mm	Galvanised	103548
	10 mm	Black	103677
	15 mm	Galvanised	103549
	15 mm	Black	103678
	20 mm	Galvanised	103550
	20 mm	Black	103679
Door closer drilling template For TS 5000/4000/3000/2000		053134	
Link arm mounting plate For TS 4000/2000, with narrow rebates	Silver-coloured	057109	
	Acc. to RAL ²⁾	082506	
Link arm mounting plate For TS 4000/2000, with parallel arm mounting	Silver-coloured	053318	
	Dark bronze	053319	
	Acc. to RAL ²⁾	027460	
Door closer mounting plate For TS 5000 EFS/RFS/EHY / 4000 E with hole pattern acc. to DIN EN 1154 Supplement 1	Silver-coloured	059107	
	Acc. to RAL ²⁾	100044	

GEZE SYSTEM TS 4000 / TS 2000 / TS 1500

Accessories		
Closing sequence control release mechanism For TS 4000 IS/E-IS/R-IS	No.1 hinge clearance 1200-1500 mm	058306
	No.2 hinge clearance 1500-1800 mm	058307
	No.3 hinge clearance 1800-2100 mm	058308
	No.4 hinge clearance 2100-2400 mm	058309
	No.5 hinge clearance 2400-2700 mm	058310
	No.6 hinge clearance in excess of 2700 mm	058311
GEZE smoke switch control unit RSZ 6 Approved for all GEZE hold-open mechanisms	Silver-coloured	099851
	Dark bronze	099857
	White RAL 9016	099858
	Stainless steel effect ¹⁾	099856
	Acc. to RAL ²⁾	099859
GEZE smoke switch RS 5 For ceiling and lintel mounting	Silver-coloured	027052
	Dark bronze	028939
	White RAL 9016	028940
	Stainless steel effect ¹⁾	028942
	Acc. to RAL ²⁾	028941
GEZE circuit breaker Concealed version, for manual release of electrically controlled door closers and retention magnets	Alpine white	116266
Surface-mounted socket Package		120503

1) Only suitable for dry rooms

2) Surcharge for special RAL colours, see general information

GEZE TS 4000 R-IS

Link arm door closer system for double-leaf doors with a hinge clearance up to 2800 mm featuring integrated closing sequence control, electric hold-open and smoke switch control unit

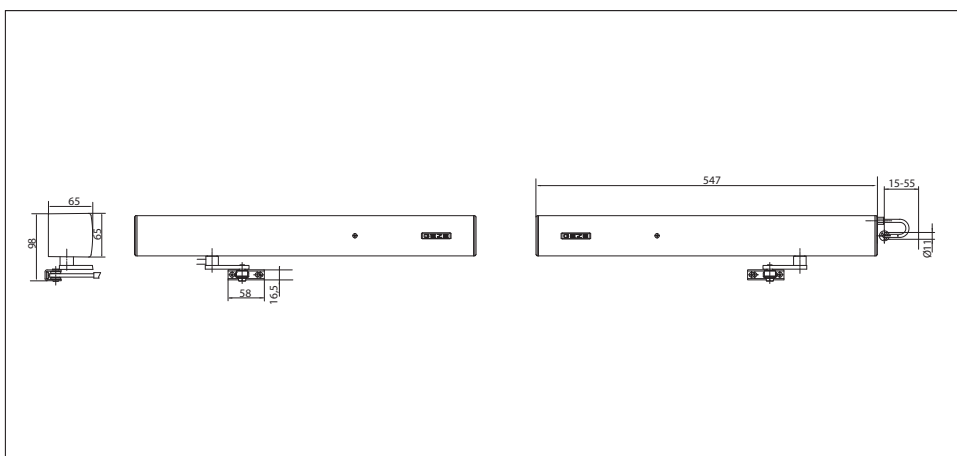
TS 4000 R-IS overhead door closer system, featuring integrated hydraulic closing sequence control, electric hold-open and integrated smoke switch control unit, is approved for mounting on fire and smoke doors. In the event of a fire, the smoke detector is activated and the door closes automatically. When used with double-leaf doors, the integrated closing sequence control ensures that both door leaves close in the correct order. When the door closes, the moving leaf remains in the waiting position until the fixed leaf is closed and until the moving leaf is released by the closing sequence control. The electric hold-open is infinitely variable between 80° and 175° in accordance with EN 1155.

The size 1-6 closing force to EN 1154, with optical size indicator and the closing speed can be adjusted from the front. The latching action is adjusted by means of the link arm. The product has been granted official building approval of a general nature by the DIBt (German Institute for Building Technology).

Special version:

- GEZE door closer TS 4000 R-IS second unit
Second unit (similar to TS 4000 R-IS), without smoke switch and power supply unit for direct connection to GEZE TS 4000 R-IS, for an identical "look". The product has been tested in accordance with the EN 1154 and EN 1155 standards.

GEZE TS 4000 R-IS



Application range

- For double-leaf doors, leaf width up to 1400 mm
- Compatible with left-hand and right-hand doors without the need for conversion
- For fire and smoke doors (door closers with mounting plate)
- Standard mounting involving transom mounting on opposite hinge side
- Transom mounting on hinge side possible with guide rail, closing force EN3, not approved for fire and smoke doors

Closer specifications

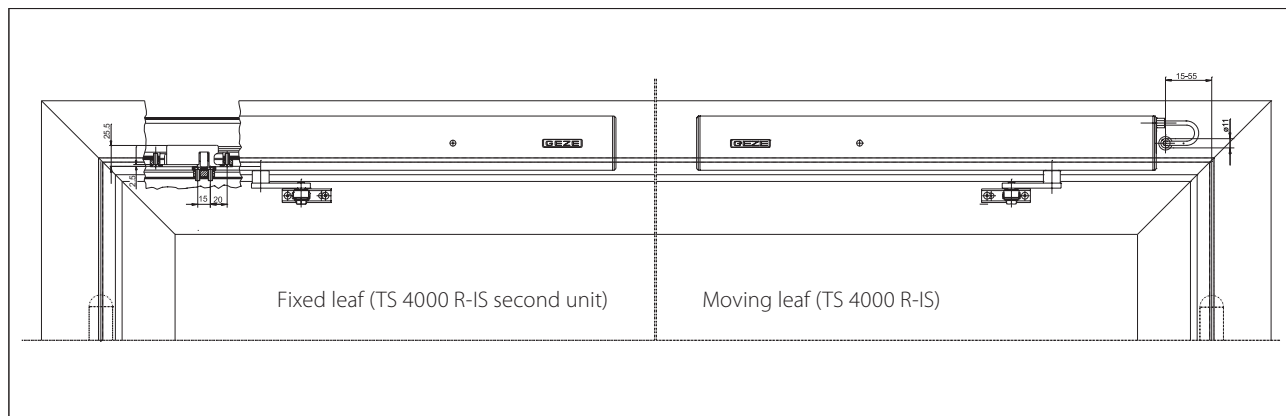
Product features		GEZE TS 4000 R-IS KM BG Closer	GEZE TS 4000 R-IS KM BG Closer second unit
Closing force to EN 1154		1 - 6	
Leaf width recommended up to		1400 mm	
Identical version DIN-L and DIN-R		●	●
Supply voltage		230 V 50 Hz	24 V
Enclosure rating IP		IP 20	
Product tested in acc. with		Door closer tested in acc. with EN 1154 Hold-open mechanism tested in acc. with EN 1155 Door closing sequence selector tested in acc. with EN 1158 Official building approval of a general nature from the DIBt (German Institute for Building Technology) for use as a hold-open system	Door closer tested in acc. with EN 1154 Hold-open mechanism tested in acc. with EN 1155
Suitable for fire and smoke doors		●	●
Mounting plate with hole pattern acc. to EN 1154 Supplement 1		●	●
Length		547 mm	
Installation depth		65 mm	
Height		65 mm	
Functions			
Adjustable closing force		● Infinitely variable	
Adjustable closing speed		●	●
Adjustable latching action		● Via link arm	
Integrated back check		○	
Closing force adjustment position		Front	
Optical closing force display		●	●
Safety valve featuring protection against vandalism		●	●
Thermo-constant valves		●	●
Integrated closing sequence control		●	
Integrated hold-open mechanism		Electric	
Hold-open angle		80°-175°	
Hold-open mechanism can be overridden		●	●
Integrated smoke switch		●	
With visual status display		●	
With soiling indicator		●	
With adaption of the alarm threshold		●	
Integrated power supply unit		●	

● = yes

○ = no

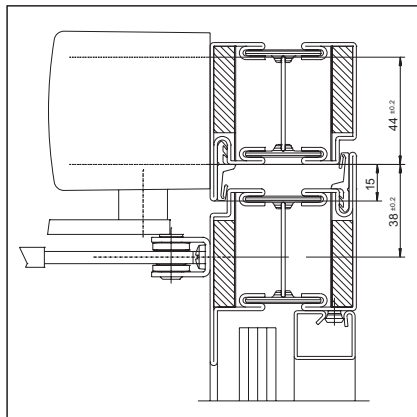
Transom mounting/opposite hinge side TS 4000 R-IS

View

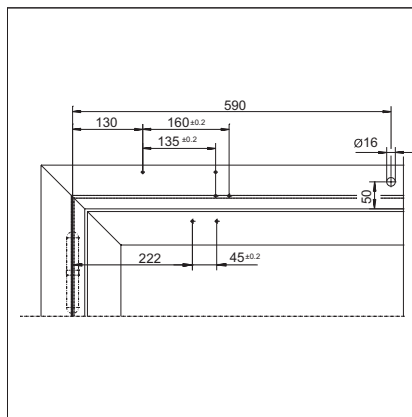


Mounting example for GEZE TS 4000 R-IS

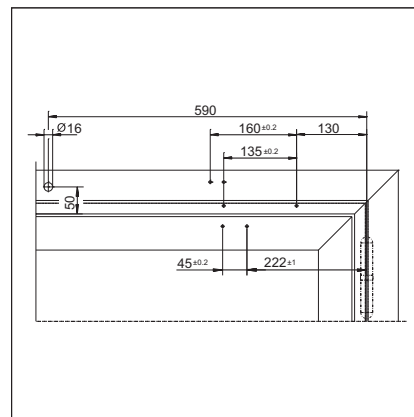
Direct mounting



Cross section = direct mounting

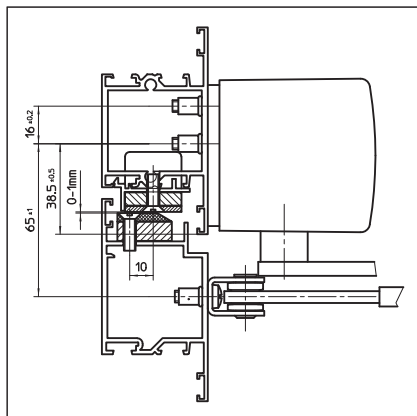


Fitting dimensions for right-hand door

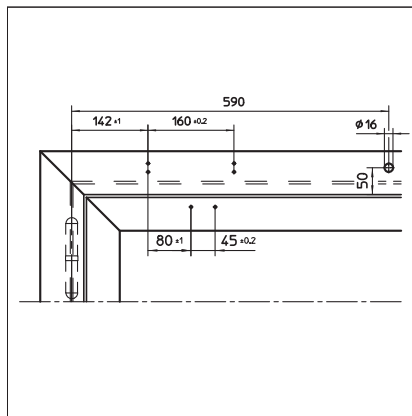


Fitting dimensions for left-hand door

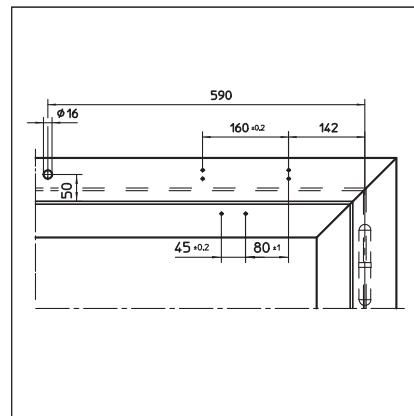
Mounting with mounting plate



Cross section = mounting with mounting plate

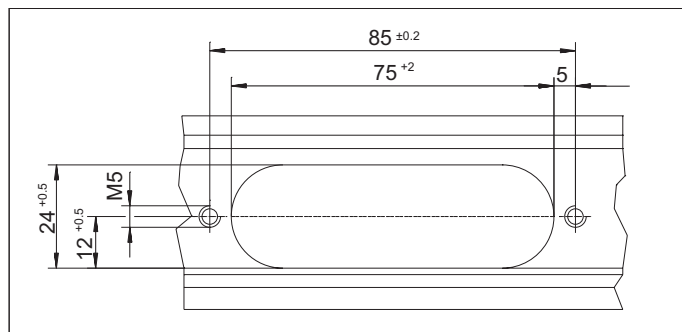


Fitting dimensions for right-hand door



Fitting dimensions for left-hand door

Recess for release mechanism



GEZE SYSTEM TS 4000 / TS 2000 / TS 1500

GEZE TS 4000 R-IS - Ordering information

Designation	Version	ID no.
GEZE TS 4000 R-IS KM BG closer	Silver-coloured	105244
Size EN 1-6, transom mounting on opposite hinge side, featuring integrated closing sequence control, electric hold-open and smoke switch control unit (without link arm and release mechanism)	Acc. to RAL ²⁾	105245
GEZE TS 4000 R-IS KM BG closer second unit	Silver-coloured	105246
Size EN 1-6, transom mounting on opposite hinge side, featuring electric hold-open (without smoke switch control unit and link arm)	Acc. to RAL ²⁾	105247
Link arm TS 4000/2000 Extended, for transom mounting with a soffit depth of 70-170 mm	Silver-coloured	102431
	Dark bronze	102432
	White RAL 9016	102433
	Acc. to RAL ²⁾	102434
Link arm TS 4000/2000 Standard	Silver-coloured	102421
	Dark bronze	102422
	White RAL 9016	102423
	Stainless steel effect ¹⁾	102426
	Acc. to RAL ²⁾	102425
Installation material		
Door closer mounting plate For TS 5000 RFS KM/4000 R & R-IS with hole pattern acc. to DIN EN 1154 Supplement 1	Black	058808
Accessories		
Closing sequence control release mechanism For TS 5000 IS/E-IS/R-IS	Nr.1 hinge clearance 1200-1500 mm	058306
	Nr.2 hinge clearance 1500-1800 mm	058307
	Nr.3 hinge clearance 1800-2100 mm	058308
	Nr.4 hinge clearance 2100-2400 mm	058309
	Nr.5 hinge clearance 2400-2700 mm	058310
	Nr.6 hinge clearance in excess of 2700 mm	058311
GEZE smoke switch RS 5 For ceiling and lintel mounting	Silver-coloured	027052
	Dark bronze	028939
	White RAL 9016	028940
	Stainless steel effect ¹⁾	028942
	Acc. to RAL ²⁾	028941
GEZE circuit breaker Concealed version, for manual release of electrically controlled door closers and retention magnets	Alpine white	116266
Surface-mounted socket Package		120503

1) Only suitable for dry rooms

2) Surcharge for special RAL colours, see general information

GEZE TS 4000 Tandem

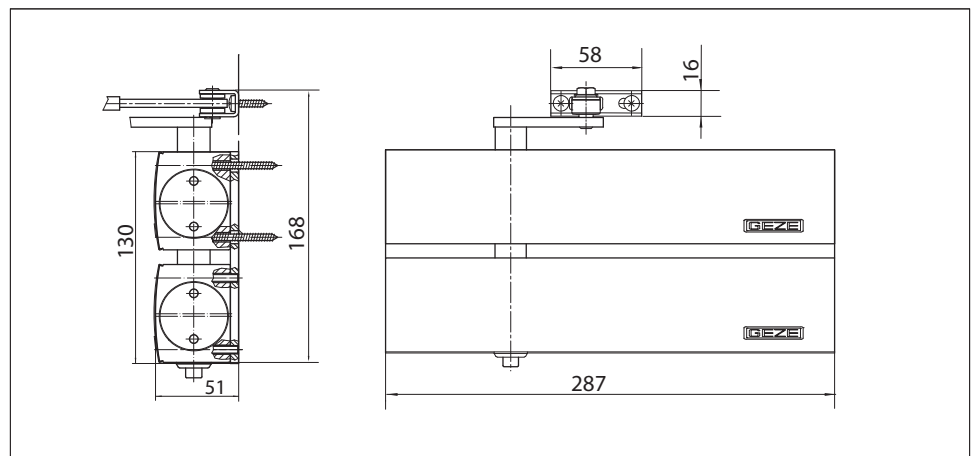
Link arm door closer for single-leaf doors/gates with a leaf width in excess 1600 mm or that are extremely heavy

Combination of a TS 4000 EN 5-7 and a TS 4000 EN 1-6 on an adapter plate with a shared spindle. Closing force > EN 7, for use with extremely large and heavy doors or gates. The individual products have been tested in accordance with the EN 1154 standard.

Special version:

- GEZE TS 4000 tandem wet room version
Same as TS 4000 tandem, but with specially nickel-plated spindle and bearing shells, plus stainless steel screw accessories for aggressive environments.

GEZE TS 4000 tandem



Application range

- For single-action doors, leaf width > 1600 mm
- Compatible with left-hand and right-hand doors (conversion required)
- For fire and smoke doors (door closers with mounting plate)
- Standard mounting on door leaf, hinge side; transom mounting on opposite hinge side also possible
- Can be installed on door leaf on opposite hinge side with parallel arm mounting

Closer specifications

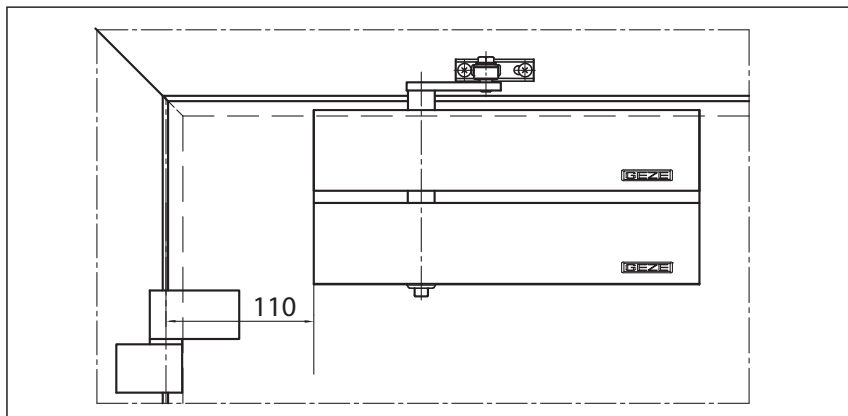
Product features	GEZE TS 4000 tandem complete package
Identical version DIN-L and DIN-R	●
Product tested in acc. with	Door closer tested in acc. with EN 1154
Suitable for fire and smoke doors	●
Mounting plate with hole pattern acc. to EN 1154 Supplement 1	●
Length	287 mm
Installation depth	51 mm
Height	130 mm
Functions	
Adjustable closing force	● Infinitely variable
Adjustable closing speed	●
Adjustable latching action	● Via link arm
Integrated back check	● Hydraulically adjustable
Closing force adjustment position	Front
Optical closing force display	●
Safety valve featuring protection against vandalism	●
Thermo-constant valves	●

● = yes

○ = no

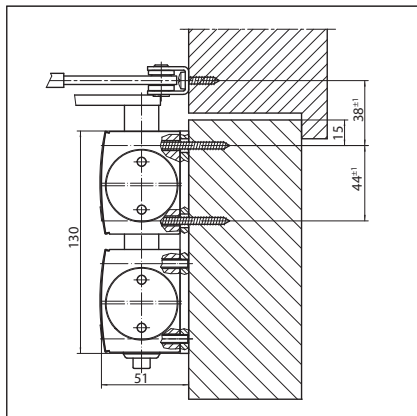
Door leaf mounting/hinge side TS 4000 tandem

View

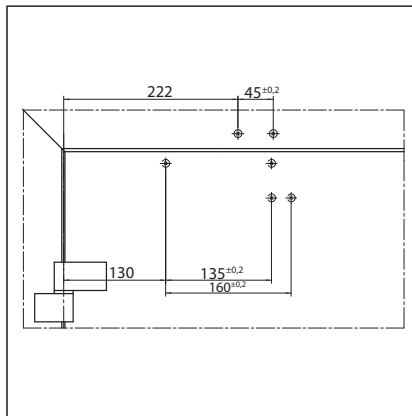


Mounting example for GEZE TS 4000 tandem

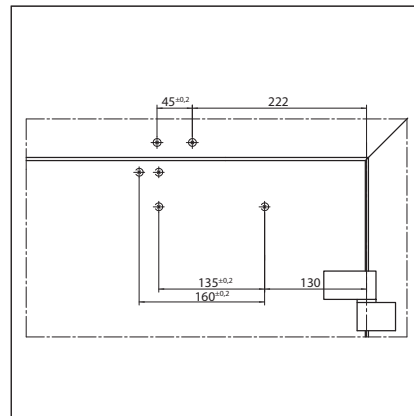
Direct mounting



Cross section = direct mounting

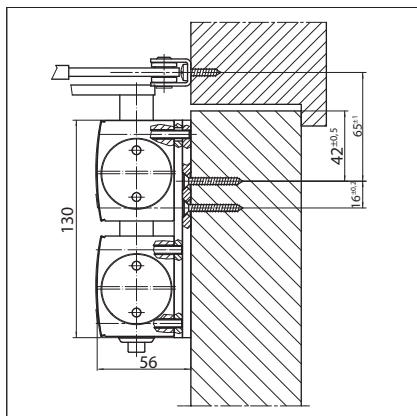


Fitting dimensions for left-hand door

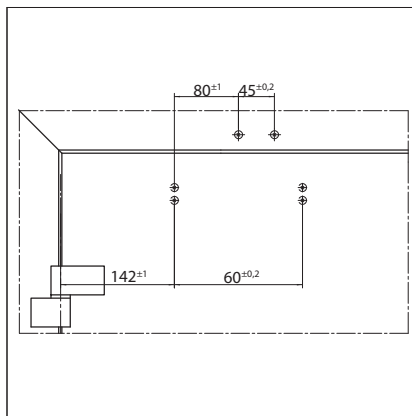


Fitting dimensions for right-hand door

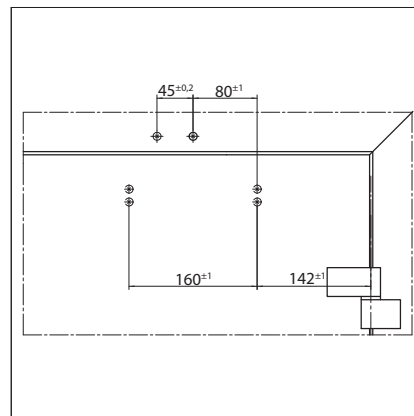
Mounting with mounting plate



Cross section = mounting with mounting plate



Fitting dimensions for left-hand door



Fitting dimensions for right-hand door

GEZE TS 4000 tandem - Ordering information

Designation	Version	ID no.
GEZE TS 4000 tandem complete package With back check, featuring standard link arm	Silver-coloured	102841
	Acc. to RAL ¹⁾	116186
Link arm TS 4000/2000 Extended, for transom mounting with a soffit depth of 70-170 mm	Silver-coloured	102431
	Dark bronze	102432
	White RAL 9016	102433
	Acc. to RAL ¹⁾	102434
GEZE TS 4000 tandem wet room version complete package With back check, special protection against corrosion with stainless steel screw accessories and standard link arm	Silver-coloured	120105
Installation material		
Spindle extension for TS 4000/TS 2000 Crown type connection	10 mm Galvanised	103548
	10 mm Black	103677
	15 mm Galvanised	103549
	15 mm Black	103678
	20 mm Galvanised	103550
	20 mm Black	103679
Door closer drilling template For TS 5000/4000/3000/2000		053134
Link arm mounting plate For TS 4000/2000, with narrow rebates	Silver-coloured	057109
	Acc. to RAL ¹⁾	082506
Link arm mounting plate For TS 4000/2000, with parallel arm mounting	Silver-coloured	053318
	Dark bronze	053319
	Acc. to RAL ¹⁾	027460
Door closer mounting plate For TS 4000 tandem with hole pattern acc. to DIN EN 1154 Supplement 1	Silver-coloured	105119
	Acc. to RAL ¹⁾	116189

¹⁾ Surcharge for special RAL colours, see general information

Cover caps for GEZE door closers

The following cover caps are available for the TS 2000 and TS 4000 overhead door closers:

- Silver-coloured



- Dark bronze



- White RAL 9016



- Polished brass



- Stainless steel



Other RAL colours are available on request.

Product information for door closers

Due to the liability the manufacturer has for its products under the German product liability law (§ 4 Prod-HaftG), the following information regarding door closers for swing doors must be observed. Non-compliance discharges the manufacturer from its liability.

1) Product information and use as intended

Within this context, door closers are to be defined as products for closing swing doors after they have been opened manually. The closing action is dampened using a hydraulically adjustable feature. The level of closing force required for specific leaf widths is defined in EN 1154. In the case of non-standard applications, the details provided by the manufacturer are to be regarded as definitive. Door closers are used on internal swing doors made from metal, timber or plastic and combinations thereof. When used on fire and smoke doors or other standardised self-closing doors, they are subject to strict requirements in terms of the type of installation and their position. Any deviation from these requirements constitutes improper use.

Proper use of door closers (use as intended) relies on doors being installed perpendicular and their being able to move smoothly; it is also dependent on the door closers being properly secured. The products must be installed and adjusted professionally in accordance with the manufacturer's specifications.

Where local conditions are particularly unfavourable (wind), door closers with higher torques must be used.

It is particularly important to use door closers with a back check function on swing doors that are exposed to wind when opening outwards.

The back check function helps protect people, door elements, plus nearby walls and objects, without restricting the door opening angle. If the structural conditions of the door are such that there is a risk of the door leaf hitting the frame in the vicinity of the door's axis of rotation, a buffer must be installed to limit the door's maximum opening angle. If swing doors are to be fixed in the open position, this may only be achieved using special additional fittings or integrated constructional elements. When used with fire and smoke doors, the devices must be officially approved by the German Institute for Building Technology (door suitability certificates must be heeded).

Door closers are not suitable for installation on swing doors in the case of unprotected exterior mounting or for installation in environments where the air contains aggressive, corrosive substances or in extremely high or low temperatures.

Following installation, enclosures for floor-mounted door closers must be protected against soiling. If floor-mounted door closers are exposed to penetrating water (e.g. wet rooms or external doors with no protection from the rain), the area between the cement box and the door closer cover must be sealed with a suitable sealing compound.

Compliance with mandatory statutory provisions must be ensured, where applicable, before door closers (including any additional devices) are installed and commissioned.

2) Misuse

Misuse (i.e. improper use of door closer products for swing doors) includes, in particular:

- The presence of obstacles in the closing area, scraping doors, sticking seals, wooden wedges, etc. that hinder the door's closing action
- Incorrect or improper mounting and/or adjustment
- Reaching into the area between the door frame and leaf (risk of injury)
- If the warranted properties are likely to trigger proper functioning, e.g. in the event of storms or unusual levels of overpressure or underpressure acting on the door

- If door closers are used for any purpose other than closing doors
- If the selected door closer size does not tally with the manufacturer's recommendations

3) Product performance

Where catalogues, brochures, manuals, etc. do not contain specific details of product performance, special requirements must be discussed and agreed with the manufacturer.

The EN 1154 standards serve as a guideline. These standards stipulate the vast majority of basic and additional requirements. Amongst other things, the usability of door closers depends on how often they are operated, how they are operated, environmental influences and how they are cared for. Door closers must be replaced as soon as the door's closing action can no longer be guaranteed to be fault-free and reliable.

4) Product maintenance

Safety-related components of door closers must be checked regularly for tightness and signs of wear (depending on what the requirements are). Fixing screws must be re-tightened and defective components replaced. In addition, the following maintenance work must be carried out at least once a year (depending on the swing door type and extent of use):

- Grease all moving parts on the link arm
- In the case of door closers with special functions (hold-open mechanisms and hold-open devices), ensure compliance with statutory inspections, monitoring requirements and suggested maintenance intervals
- Check the closer settings, e.g. the closing speed
- Check that the door is able to move easily

Do not use any cleaning agents that contain corrosive or damaging ingredients.

5) Duties to inform and instruct

The following resources are available to help planners, specialist suppliers, installers, builders and users fulfil their duties of information and instruction:

- Catalogues, brochures, leaflets,
- Specification texts and bidding documents
- Attachment instructions, installation drawings, operating instructions, standards
- Advice from field staff

To ensure correct use of door closers on swing doors, guarantee their function and make sure they are maintained and cared for appropriately:

- Architects and planners are advised to order and observe the necessary product information
- Specialist suppliers are advised to observe the product information and advice in the price lists and, in particular, to order all relevant instructions, which are to be passed on to the installer
- Installers are advised to observe all the product information and to pass it on to the client and user

POTENTIAL APPLICATIONS OF GEZE PRODUCTS

You will find more product information in the relevant brochures, see ID numbers.

Door technology

01	Overhead door closers ID 091593, ID 091594
02	Hold-open systems ID 091593, ID 091594
03	Integrated door closers ID 091609
04	Floor springs ID 091607
05	Sliding door gear systems and linear guides ID 123605, ID 008770, ID 000586

Automatic door systems

06	Swing doors ID 144785
07	Sliding, telescopic and folding doors ID 143639
08	Circular and semi-circular sliding doors ID 135772
09	Revolving doors ID 132050
10	Actuation devices and sensors ID 142655

Smoke and heat extraction and window technology

11	Fanlight opening systems ID 127787
12	Electric opening and locking systems ID 127785, ID 127789
13	Electrical spindle and linear drives ID 127785, ID 127789
14	Electric chain drives ID 127785, ID 127789
15	Smoke and heat extraction systems ID 127785, ID 139075

Safety technology

16	Emergency exit systems ID 132408
17	Access control systems ID 132158
18	Panic locks ID 132848
19	Electric strikes ID 148666
20	Building management system ID 132408

Glass systems

21	Manual sliding wall systems (MSW) ID 104377
22	Integrated all-glass systems (IGG) ID 104366
23	GEZE Patch fittings mono glass systems ID 122521



POTENTIAL APPLICATIONS OF GEZE PRODUCTS



Door technology

The functionality, superior performance and reliability of GEZE door closers are impressive. A common design across the range, the ability to use them on all common door leaf widths and weights, and the fact that they can be individually adjusted makes their selection simple. They are continually being improved and enhanced with up-to-date features. For example, the requirements of fire protection and accessibility are fulfilled with a door closer system.

Automatic door systems

GEZE automatic door systems open up a huge variety of options in door design. The latest, innovative high-performance drive technology, safety, ease of accessibility and first class universal drive design set them apart. GEZE offers complete solutions for individual requirements. A dedicated division is responsible for the development and construction of individual special designs.

Smoke and heat extraction and window technology

GEZE smoke and heat extraction systems and ventilation technology provide complete systems solutions combining the many requirements of different types of windows. We supply a full range from energy efficient drive systems to natural ventilation and complete solutions for supplying and extracting air, also as certified SHEVs.

Safety technology

GEZE safety technology sets the standards where preventative fire protection, access control and anti-theft security in emergency exits are concerned. For each of these objectives GEZE offers tailored solutions, which combine the individual safety requirements in one intelligent system and close doors and windows in case of danger in a coordinated manner.

Building systems

In GEZE's Building Management System GEZE door, window and safety products can be integrated in to the security and control systems of the building. A central control and visualisation system monitors various automation components in the building and offers security through many different networking capabilities.

Glass systems

GEZE glass systems stand for open and transparent interior design. They can either blend discreetly into the architecture of the building or stand out as an accentuated feature. GEZE offers a wide variety of technologies for functional, reliable and aesthetic sliding wall or sliding door systems providing security with lots of design scope.

GEZE GmbH
P.O. Box 1363
71226 Leonberg
Germany

GEZE GmbH
Reinhold-Vöster-Straße 21-29
71229 Leonberg
Germany
Telefon +49 (0) 7152-203-0
Telefax +49 (0) 7152-203-310

www.geze.com

Germany
GEZE Sonderkonstruktionen GmbH
Planken 1
97944 Boxberg-Schweigern
Tel. +49 (0) 7930-92 94-0
Fax +49 (0) 7930-92 94-10
E-Mail: sk.de@geze.com

GEZE GmbH
Niederlassung Nord/Ost
Bühningstraße 8
13086 Berlin (Weissensee)
Tel. +49 (0) 30-47 89 90-0
Fax +49 (0) 30-47 89 90-17
E-Mail: berlin.de@geze.com

GEZE GmbH
Niederlassung West
Nordsternstraße 65
45329 Essen
Tel. +49 (0) 201-83 082-0
Fax +49 (0) 201-83 082-20
E-Mail: essen.de@geze.com

GEZE GmbH
Niederlassung Mitte
Adenauerallee 2
61440 Oberursel (b. Frankfurt)
Tel. +49 (0) 6171-63 610-0
Fax +49 (0) 6171-63 610-1
E-Mail: frankfurt.de@geze.com

GEZE GmbH
Niederlassung Süd
Breitwiesenstraße 8
71229 Leonberg
Tel. +49 (0) 7152-203-594
Fax +49 (0) 7152-203-438
E-Mail: leonberg.de@geze.com

GEZE Service GmbH NL Südwest
Reinhold-Vöster-Straße 25
71229 Leonberg
Tel. +49 (0) 7152-92 33 34

GEZE Service GmbH NL Nord-Ost
Bühningstraße 8
13086 Berlin (Weissensee)
Tel. +49 (0) 30-47 02 17 32

GEZE Service GmbH NL West
Nordsternstraße 65
45329 Essen
Tel. +49 (0) 201-8 30 82 16

GEZE Service GmbH NL Mitte
Feldbergstraße 59
61440 Oberursel
Tel. +49 (0) 6171-63 327-0

GEZE Service GmbH NL Süd
Parking 17
85748 Garching bei München
Tel. +49 (0) 89-120 07 42-0

Austria
GEZE Austria
Wiener Bundesstrasse 85
A-5300 Hallwang
Tel: +43/6225/87180
Fax: +43/6225/87180-299
E-Mail: austria.at@geze.com

Baltic States
GEZE GmbH Baltic States office
Dzelzavas iela 120 S
1021 Riga
Tel. +371 (0) 67 89 60 35
Fax +371 (0) 67 89 60 36
E-Mail: office-latvia@geze.com

GEZE Benelux B.V.
Steenoven 36
5626 DK Eindhoven
Tel. +31 (0) 40-26 290-80
Fax +31 (0) 40-26 290-85
E-Mail: benelux.nl@geze.com

Bulgaria
GEZE Bulgaria - Trade
Representative Office
61 Pirinski Prohod, entrance „B“,
4th floor, office 5,
1680 Sofia
Tel. +359 (0) 24 70 43 73
Fax +359 (0) 24 70 62 62
E-Mail: office-bulgaria@geze.com

China
GEZE Industries (Tianjin) Co., Ltd.
Shuangchenzhong Road
Beichen Economic Development
Area (BEDA)
Tianjin 300400, P.R. China
Tel. +86 (0) 22-26 97 39 95-0
Fax +86 (0) 22-26 97 27 02
E-Mail: Sales-info@geze.com.cn

GEZE Industries (Tianjin) Co., Ltd.
Branch Office Shanghai
Unit 25N, Cross Region Plaza
No 899, Ling Ling Road,
Xuhui District
200030 Shanghai, P.R. China
Tel. +86 (0) 21-523 40 960
Fax +86 (0) 21-644 72 007
E-Mail: chinasales@geze.com.cn

GEZE Industries (Tianjin) Co., Ltd.
Branch Office Guangzhou
Room 17C3
Everbright Bank Building, No.689
Tian He Bei Road
510630 Guangzhou
P.R. China
Tel. +86 (0) 20-38 73 18 42
Fax +86 (0) 20-38 73 18 34
E-Mail: chinasales@geze.com.cn

GEZE Industries (Tianjin) Co., Ltd.
Branch Office Beijing
Room 1001, Tower D
Sanlitun SOHO
No. 8, Gongti North Road,
Chaoyang District
100027 Beijing, P.R.China
Tel. +86 (0) 10-59 35 93 00
Fax +86 (0) 10-59 35 93 22
E-Mail: chinasales@geze.com.cn

France
GEZE France S.A.R.L.
ZAC de l'Orme Rond
RN 19
77170 Servon
Tel. +33 (0) 1 60 62 60 70
Fax +33 (0) 1 60 62 60 71
E-Mail: france.fr@geze.com

Hungary
GEZE Hungary Kft.
Bartók Béla út 105-113.
Budapest
H-1115
Tel. +36 (1) 481 4670
Fax +36 (1) 481 4671
E-Mail: office-hungary@geze.com

Iberia
GEZE Iberia S.R.L.
Pol. Ind. El Pla
C/Comerc, 2-22, Nave 12
08980 Sant Feliu de Llobregat
(Barcelona)
Tel. +34 9-02 19 40 36
Fax +34 9-02 19 40 35
E-Mail: info@geze.es

India
GEZE India Private Ltd.
MF 2 & 3, Guindy Industrial Estate
Ekkattuthangal
Chennai 600 097
Tamilnadu
Tel. +91 (0) 44 30 61 69 00
Fax +91 (0) 44 30 61 69 01
E-Mail: office-india@geze.com

Italy
GEZE Italia Srl
Via Giotto, 4
20040 Cambiago (MI)
Tel. +39 (0) 29 50 695-11
Fax +39 (0) 29 50 695-33
E-Mail: italia.it@geze.com

GEZE Engineering Roma Srl
Via Lucrezia Romana, 91
00178 Roma
Tel. +39 (0) 6-72 65 311
Fax +39 (0) 6-72 65 3136
E-Mail: roma@geze.biz

Poland
GEZE Polska Sp.z o.o.
ul. Annapol 21
03-236 Warszawa
Tel. +48 (0) 22 440 4 440
Fax +48 (0) 22 440 4 400
E-Mail: geze.pl@geze.com

Romania
GEZE Romania s.r.l.
IRIDE Business Park,
Str. Dimitrie Pompeiu nr. 9-9a,
Building 10, Level 2, Sector 2,
020335 Bucharest
Tel.: +40 (0) 21 25 07 750
Fax: +40 (0) 21 25 07 750
E-Mail: office-romania@geze.com

Russian Federation
GEZE GmbH Representative
Office Russia
Gamsonovskiy Per. 2
115191 Moskau
Tel. +7 (0) 495 933 06 59
Fax +7 (0) 495 933 06 74
E-Mail: office-russia@geze.com

Scandinavia – Sweden
GEZE Scandinavia AB
Mallslingan 10
Box 7060
18711 Täby, Sweden
Tel. +46 (0) 8-7323-400
Fax +46 (0) 8-7323-499
E-Mail: sverige.se@geze.com

Scandinavia – Norway
GEZE Scandinavia AB avd. Norge
Industriveien 34 B
2073 Dal
Tel. +47 (0) 639-57 200
Fax +47 (0) 639-57 173
E-Mail: norge.se@geze.com

Scandinavia – Finland
Branch office of GEZE Scandinavia AB
Herralantie 824
Postbox 20
15871 Hollola
Tel. +358 (0) 10-40 05 100
Fax +358 (0) 10-40 05 120
E-Mail: finland.se@geze.com

Scandinavia – Denmark
GEZE Danmark
Branch office of GEZE Scandinavia AB
Mårkærvej 13 J-K
2630 Taastrup
Tel. +45 (0) 46-32 33 24
Fax +45 (0) 46-32 33 26
E-Mail: danmark.se@geze.com

Singapore
GEZE (Asia Pacific) Pte. Ltd.
21 Bukit Batok Crescent
#23-75 Wcega Tower
Singapore 658065
Tel: +65 6846 1338
Fax: +65 6846 9353
E-Mail: gezesesea@geze.com.sg

South Africa
GEZE Distributors (Pty) Ltd.
118 Richards Drive, Halfway House,
Ext 111, P.O. Box 7934, Midrand 1685,
South Africa
Tel: +27 (0) 113 158 286
Fax: +27 (0) 113158261
Email: info@gezesa.co.za

Switzerland
GEZE Schweiz AG
Bodenackerstrasse 79
4657 Dulliken
Tel. +41 (0) 62 285 54 00
Fax +41 (0) 62 285 54 01
E-Mail: schweiz.ch@geze.com

Turkey
GEZE GmbH Türkiye - İstanbul
İrtibat Bürosu
Ataşehir Bulvarı, Ata 2/3
Plaza Kat: 9 D: 84 Ataşehir
Kadıköy / İstanbul
Tel. +90 (0) 21 64 55 43 15
Fax +90 (0) 21 64 55 82 15
E-Mail: office-turkey@geze.com

Ukraine
GEZE Ukraine TOV
ul. Viskoznaya, 17,
Building 93-B, Office 12
02660 Kiev
Tel./Fax +38 (0) 44 501 22 25
E-Mail: office-ukraine@geze.com

United Arab Emirates/GCC
GEZE Middle East
P.O. Box 17903
Jebel Ali Free Zone
Dubai
Tel. +971 (0) 4-88 33 112
Fax +971 (0) 4-88 33 240
E-Mail: geze@emirates.net.ae

United Kingdom
GEZE UK Ltd.
Blenheim Way
Fradley Park
Lichfield
Staffordshire WS13 8SY
Tel. +44 (0) 1543 44 30 00
Fax +44 (0) 1543 44 30 01
E-Mail: info.uk@geze.com

GEZE REPRESENTATIVE