



The name of William Hopkins & Sons Ltd has been synonymous for supplying the architectural and building trades with decorative products for over 200 years.

In 1980 the decorative tube and fittings division was purchased by the present owners and re-established itself in smaller, rented premises in Birmingham.

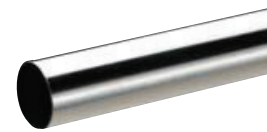
By 1988, William Hopkins & Sons Ltd had outgrown its premises and merged with Gardine Products Ltd, to move to the present, purpose built factory in Dollman Street. Since then, several new product ranges have been introduced, such as bar rail fittings and grab rails.

The acquisition of Macbee Manufacturing in August 2005 saw further growth through the addition of new bathroom accessory ranges, such as Kingfisher and bathroom cabinets.

With this acquisition came shrink wrapping facilities enabling us to supply carded products either under the Macbee brand or if required, in customers own packaging.

William Hopkins & Sons Ltd mission statement is to endeavour to provide a 'one stop shop' for our customers, which has lead to the introduction of a wider variety of products & accessories.

This catalogue showcases our plated tube and fittings. Please look out for our other catalogues incorporating bar railing products, grab rail and bathroom accessory ranges.



— chrome plated cut lengths individually sleeved in polythene —

code	diameter	length
19CP2	3/4" Ø 19mm Ø	2ft 610mm
19CP3	3/4" Ø 19mm Ø	3ft 914mm
19CP4	3/4" Ø 19mm Ø	4ft 1219mm
19CP5	3/4" Ø 19mm Ø	5ft 1524mm
19CP6	3/4" Ø 19mm Ø	6ft 1829mm
19CP8	3/4" Ø 19mm Ø	8ft 2438mm
25CP2	1" Ø 25mm Ø	2ft 610mm
25CP3	1" Ø 25mm Ø	3ft 914mm
25CP4	1" Ø 25mm Ø	4ft 1219mm
25CP5	1" Ø 25mm Ø	5ft 1524mm
25CP6	1" Ø 25mm Ø	6ft 1829mm
25CP8	1" Ø 25mm Ø	8ft 2438mm



— brass plated cut lengths individually sleeved in polythene —

code	diameter	length
19BP2	3/4" Ø 19mm Ø	2ft 610mm
19BP3	3/4" Ø 19mm Ø	3ft 914mm
19BP4	3/4" Ø 19mm Ø	4ft 1219mm
19BP5	3/4" Ø 19mm Ø	5ft 1524mm
19BP6	3/4" Ø 19mm Ø	6ft 1829mm
19BP8	3/4" Ø 19mm Ø	8ft 2438mm
25BP2	1" Ø 25mm Ø	2ft 610mm
25BP3	1" Ø 25mm Ø	3ft 914mm
25BP4	1" Ø 25mm Ø	4ft 1219mm
25BP5	1" Ø 25mm Ø	5ft 1524mm
25BP6	1" Ø 25mm Ø	6ft 1829mm
25BP8	1" Ø 25mm Ø	8ft 2438mm



— white plastic coated cut lengths individually sleeved in polythene —

code	diameter	length
19W2	3/4" Ø 19mm Ø	2ft 610mm
19W3	3/4" Ø 19mm Ø	3ft 914mm
19W4	3/4" Ø 19mm Ø	4ft 1219mm
19W5	3/4" Ø 19mm Ø	5ft 1524mm
19W6	3/4" Ø 19mm Ø	6ft 1829mm
19W8	3/4" Ø 19mm Ø	8ft 2438mm
25W2	1" Ø 25mm Ø	2ft 610mm
25W3	1" Ø 25mm Ø	3ft 914mm
25W4	1" Ø 25mm Ø	4ft 1219mm
25W5	1" Ø 25mm Ø	5ft 1524mm
25W6	1" Ø 25mm Ø	6ft 1829mm
25W8	1" Ø 25mm Ø	8ft 2438mm



• **direct chrome plated steel tube - standard 2.5m / 4m / 5m** •

code	wall thickness	diameter	length
15011	0.5mm	3/8" Ø 9mm Ø	2.5m only
15021	0.5mm	1/2" Ø 12mm Ø	
15031	0.5mm	5/8" Ø 16mm Ø	
15041	0.6mm	3/4" Ø 19mm Ø	
15051	0.6mm	1" Ø 25mm Ø	
15061	1.2mm	1 1/4" Ø 32mm Ø	
15071	1.2mm	1 1/2" Ø 38mm Ø	
15083	1.6mm	2" Ø 51mm Ø	
15003	1.6mm	2 1/2" Ø 63mm Ø	2.5m only
15093	1.6mm	3" Ø 75mm Ø	2.5m only



• **direct brass plated steel tube - standard 2.5m / 4m / 5m** •

code	wall thickness	diameter
15020	0.5mm	1/2" Ø 12mm Ø
15030	0.5mm	5/8" Ø 16mm Ø
15040	0.6mm	3/4" Ø 19mm Ø
15050	0.6mm	1" Ø 25mm Ø
15060	1.2mm	1 1/4" Ø 32mm Ø
15070	1.2mm	1 1/2" Ø 38mm Ø
15080	1.6mm	2" Ø 51mm Ø



• **direct plated oval tube - standard 2.5m / 4m / 5m** •

code	wall thickness	diameter	finish
15461	0.7mm	1 1/8 x 5/8" Ø 30 x 15mm Ø	chrome
15460	0.7mm	1 1/8 x 5/8" Ø 30 x 15mm Ø	brass



• **white plastic coated steel tube - standard 2.5m / 4m / 5m** •

code	wall thickness	diameter
15237	1.1mm	5/8" Ø 16mm Ø
15247	1.1mm	3/4" Ø 19mm Ø
15257	1.2mm	1" Ø 25mm Ø



• **plastic coated oval tube - standard 2.5m / 4m / 5m** •

code	wall thickness	diameter	finish
15557	0.7mm	1 1/8 x 5/8" Ø 30 x 15mm Ø	white
15567	0.7mm	" Ø 22 x 15mm Ø	white
15568	0.7mm	" Ø 22 x 15mm Ø	brown



• **brass cased steel tube polished & lacquered - standard 2.5m / 5m** •

code	wall thickness	diameter
15112	0.85mm	3/8" Ø 9mm Ø
15122	0.85mm	1/2" Ø 12mm Ø
15132	0.85mm	5/8" Ø 16mm Ø
15142	0.85mm	3/4" Ø 19mm Ø
15152	0.90mm	1" Ø 25mm Ø
15162	1.0mm	1 1/4" Ø 32mm Ø
15172	1.1mm	1 1/2" Ø 38mm Ø



• **brass cased steel tube chrome plated - standard 2.5m / 5m** •

code	wall thickness	diameter
15111	0.85mm	3/8" Ø 9mm Ø
15121	0.85mm	1/2" Ø 12mm Ø
15131	0.85mm	5/8" Ø 16mm Ø
15141	0.85mm	3/4" Ø 19mm Ø
15151	0.90mm	1" Ø 25mm Ø
15161	1.0mm	1 1/4" Ø 32mm Ø
15171	1.1mm	1 1/2" Ø 38mm Ø



• **brass cased steel tube satin nickel plated - standard 2.5m / 5m** •

code	wall thickness	diameter
15157	0.90mm	1" Ø 25mm Ø
15167	1.0mm	1 1/4" Ø 32mm Ø
15177	1.1mm	1 1/2" Ø 38mm Ø
15187	1.1mm	2" Ø 51mm Ø



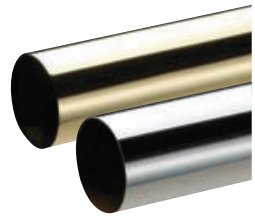
• **satin chrome / nickel plated steel tube - standard 2.5m** •

code	wall thickness	diameter	finish
15047A	0.85mm	3/4" Ø 19mm Ø	satin chrome
15057A	0.90mm	1" Ø 25mm Ø	satin chrome
15048A	0.85mm	3/4" Ø 19mm Ø	satin nickel
15058A	0.90mm	1" Ø 25mm Ø	satin nickel



• **stainless steel tube - polished / dull polished (satin)** •

code	wall thickness	diameter	finish
22855	1.5mm	1" Ø 25mm Ø	polished
22865	1.5mm	1 1/4" Ø 32mm Ø	polished
22875	1.5mm	1 1/2" Ø 38mm Ø	polished
22885	1.5mm	2" Ø 51mm Ø	polished
22859	1.5mm	1" Ø 25mm Ø	satin
22869	1.5mm	1 1/4" Ø 32mm Ø	satin
22879	1.5mm	1 1/2" Ø 38mm Ø	satin
22889	1.5mm	2" Ø 51mm Ø	satin

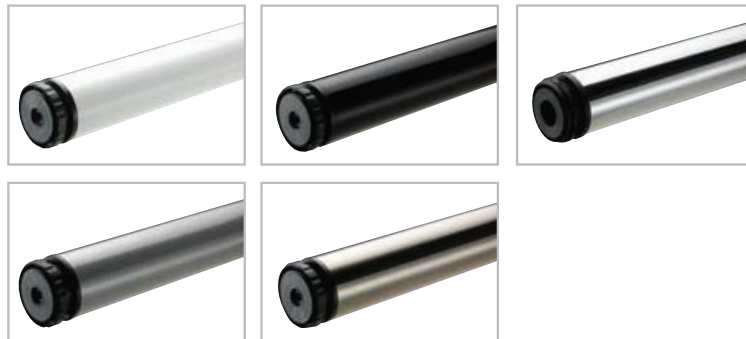


solid brass tube

code	wall thickness	diameter	finish
22824	1.6mm	3/4" Ø 19mm Ø	polished
22854	1.6mm	1" Ø 25mm Ø	polished
22864	1.6mm	1 1/4" Ø 32mm Ø	polished
22874*	1.6mm	1 1/2" Ø 38mm Ø	polished
22884*	1.6mm	2" Ø 51mm Ø	polished
22804	1.6mm	2 1/2" Ø 63mm Ø	polished
22894	1.6mm	3" Ø 75mm Ø	polished
22821	1.6mm	3/4" Ø 19mm Ø	chrome
22851	1.6mm	1" Ø 25mm Ø	chrome
22861	1.6mm	1 1/4" Ø 32mm Ø	chrome
22871*	1.6mm	1 1/2" Ø 38mm Ø	chrome
22881*	1.6mm	2" Ø 51mm Ø	chrome
22801	1.6mm	2 1/2" Ø 63mm Ø	chrome
22891	1.6mm	3" Ø 75mm Ø	chrome

adjustable worktop legs - 710mm / 870mm

code	length	finish	code	length	finish
61283	710mm	white	61283-870	870mm	white
61282	710mm	black	61282-870	870mm	black
61281	710mm	chrome	61281-870	870mm	chrome
61288	710mm	satin chrome	61288-870	870mm	satin chrome
61287	710mm	satin nickel	61287-870	870mm	satin nickel



pressed brass wardrobe sockets

code	size	finish	code	size	finish
20621	3/4"	19mm chrome	20614	5/8"	16mm brass
20631	1"	25mm chrome	20624	3/4"	19mm brass
			20634	1"	25mm brass



pressed steel wardrobe sockets

code	size	finish	code	size	finish
20641	3/4"	19mm chrome	20646	3/4"	19mm white
20651	1"	25mm chrome	20656	1"	25mm white
20644	3/4"	19mm brass			
20654	1"	25mm brass			



diecast mazak wardrobe sockets

code	size	finish	code	size	finish
20671	3/4"	19mm chrome	20676	3/4"	19mm white
20681	1"	25mm chrome	20686	1"	25mm white
20674	3/4"	19mm brass			
20684	1"	25mm brass			



wardrobe rail socket - steel concealed fix

code	size	finish	code	size	finish
20221	3/4"	19mm chrome	20222	3/4"	19mm brass
20231	1"	25mm chrome	20232	1"	25mm brass



zinc diecast socket with grub screw

code	size	finish	code	size	finish
20673	3/4"	19mm chrome	20675	3/4"	19mm brass
20683	1"	25mm chrome	20685	1"	25mm brass

note: when ordering sockets with grub screws, please change the last digit of the code to **3** for chrome plate, **5** for polish & lacquered

* when ordering these sockets, please change the last digit of the code to **7** for satin chrome finish or **8** for satin nickel finish



hot stamped brass socket (short)*

code	size	finish	code	size	finish
18101	1/2" 12mm	chrome	18102	1/2" 12mm	polished
18111	5/8" 16mm	chrome	18112	5/8" 16mm	polished
18121	3/4" 19mm	chrome	18122	3/4" 19mm	polished
18131	1" 25mm	chrome	18132	1" 25mm	polished
18141	1 1/4" 32mm	chrome	18142	1 1/4" 32mm	polished
18151	1 1/2" 38mm	chrome	18152	1 1/2" 38mm	polished
18163	2" 51mm	with grub screw	18165	2" 51mm	with grub screw
18173	2 1/2" 63mm	with grub screw	18175	2 1/2" 63mm	with grub screw
18193	3" 75mm	with grub screw	18195	3" 75mm	with grub screw



hot stamped brass socket (long)*

code	size	finish	code	size	finish
18301	3/4" 19mm	chrome	18302	3/4" 19mm	polished
18311	1" 25mm	chrome	18312	1" 25mm	polished
18321	1 1/4" 32mm	chrome	18322	1 1/4" 32mm	polished
18331	1 1/2" 38mm	chrome	18332	1 1/2" 38mm	polished



stainless steel sockets

code	size	finish	code	size	finish
18125S	3/4" 19mm	polished	18129	3/4" 19mm	satin
18135S	1" 25mm	polished	18139	1" 25mm	satin
18145S	1 1/4" 32mm	polished	18149	1 1/4" 32mm	satin
18154S	1 1/2" 38mm	polished	18159	1 1/2" 38mm	satin
18164S	2" 51mm	polished	18169	2" 51mm	satin
18174S	2 1/2" 63mm	polished	18179	2 1/2" 63mm	satin



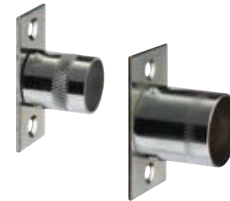
hot stamped horseshoe sockets*

code	size	finish	code	size	finish
41121	1/2" 12mm	chrome	41124	1/2" 12mm	polished
41131	5/8" 16mm	chrome	41134	5/8" 16mm	polished
41141	3/4" 19mm	chrome	41144	3/4" 19mm	polished
41151	1" 25mm	chrome	41154	1" 25mm	polished
41161	1 1/4" 32mm	chrome	41164	1 1/4" 32mm	polished
41171	1 1/2" 38mm	chrome	41174	1 1/2" 38mm	polished
41181	2" 52mm	chrome	41184	2" 52mm	polished



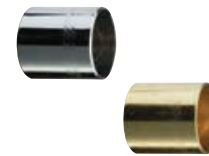
brass curtain rod brackets - cranked

code	size	finish	code	size	finish
20101	3/8" 9mm	chrome	20104	3/8" 9mm	brass
20111	1/2" 12mm	chrome	20114	1/2" 12mm	brass
18521	5/8" 16mm	chrome	18524	5/8" 16mm	brass
18531	3/4" 19mm	chrome	18534	3/4" 19mm	brass
18541	1" 25mm	chrome	18544	1" 25mm	brass



brass curtain rod brackets - straight

code	size	finish	code	size	finish
20151	3/8" 9mm	chrome	20154	3/8" 9mm	brass
20161	1/2" 12mm	chrome	20164	1/2" 12mm	brass
18571	5/8" 16mm	chrome	18574	5/8" 16mm	brass
18581	3/4" 19mm	chrome	18584	3/4" 19mm	brass
18591	1" 25mm	chrome	18594	1" 25mm	brass



backless rod brackets (concealed fix)

code	size	finish	code	size	finish
20201	3/8" 9mm	chrome	20204	3/8" 9mm	brass
20211	1/2" 12mm	chrome	20214	1/2" 12mm	brass
18671	5/8" 16mm	chrome	18674	5/8" 16mm	brass
18681	3/4" 19mm	chrome	18684	3/4" 19mm	brass
18691	1" 25mm	chrome	18694	1" 25mm	brass



mazak diecast socket for oval tube

code	size	finish	code	size	finish
03061	30 x 15mm	chrome	03066	30 x 15mm	white
03062	30 x 15mm	brass			



end diecast bracket for oval tube

code	size	finish	code	size	finish
03261	30 x 15mm END	chrome	03266	30 x 15mm END	white
03262	30 x 15mm END	brass			



centre diecast bracket for oval tube

code	size	finish	code	size	finish
03361	CENTRE	chrome	03366	CENTRE	white
03362	CENTRE	brass			

* when ordering these brackets, please change the last digit of the code to 7 for satin chrome finish or 8 for satin nickel finish

these products can be manufactured to various lengths upon request



• **brass open rail brackets (centre)* #** •

code	size	finish	code	size	finish
16521	3/8 x 2"	9 x 50mm chrome	16522	3/8 x 2"	9 x 50mm polished
16621	1/2 x 2"	12 x 50mm chrome	16622	1/2 x 2"	12 x 50mm polished
16721	5/8 x 2"	16 x 50mm chrome	16722	5/8 x 2"	16 x 50mm polished
16821	3/4 x 2"	19 x 50mm chrome	16822	3/4 x 2"	19 x 50mm polished
16921	1 x 2"	25 x 50mm chrome	16922	1 x 2"	25 x 50mm polished



• **brass ball end rail brackets (end)* #** •

code	size	finish	code	size	finish
16021	3/8 x 2"	9 x 50mm chrome	16022	3/8 x 2"	9 x 50mm polished
16121	1/2 x 2"	12 x 50mm chrome	16122	1/2 x 2"	12 x 50mm polished
16221	5/8 x 2"	16 x 50mm chrome	16222	5/8 x 2"	16 x 50mm polished
16321	3/4 x 2"	19 x 50mm chrome	16322	3/4 x 2"	19 x 50mm polished
16421	1 x 2"	25 x 50mm chrome	16422	1 x 2"	25 x 50mm polished



• **brass centre rail bracket** •

code	size	finish	code	size	finish
16941	3/4 x 2"	19 x 51mm chrome	16942	3/4 x 2"	19 x 51mm polished
16951	1 x 2"	25 x 51mm chrome	16952	1 x 2"	25 x 51mm polished



• **steel centre rail bracket** •

code	size	finish	code	size	finish
16961	3/4 x 2"	19 x 51mm chrome	16962	3/4 x 2"	19 x 51mm brass
16971	1 x 2"	25 x 51mm chrome	16972	1 x 2"	25 x 51mm brass



• **brass handrail through bracket*** •

code	size	finish	code	size	finish
17001	1 x 2"	25 x 51mm chrome	17002	1 x 2"	25 x 51mm polished
17011	1 1/4 x 2"	32 x 51mm chrome	17012	1 1/4 x 2"	32 x 51mm polished
17021	1 1/2 x 2"	38 x 51mm chrome	17022	1 1/2 x 2"	38 x 51mm polished



• **brass handrail bracket (end)*** •

code	size	finish	code	size	finish
17101	1 x 2"	25 x 51mm chrome	17102	1 x 2"	25 x 51mm polished
17111	1 1/4 x 2"	32 x 51mm chrome	17112	1 1/4 x 2"	32 x 51mm polished
17121	1 1/2 x 2"	38 x 51mm chrome	17122	1 1/2 x 2"	38 x 51mm polished

* when ordering these sockets, please change the last digit of the code to 7 for satin chrome finish or 8 for satin nickel finish



• **mazak towel rail bracket (end)** •

code	size	finish	code	size	finish
19121	3/4"	19mm chrome	19126	3/4"	19mm white
19131	1"	25mm chrome	19136	1"	25mm white
19122	3/4"	19mm brass			
19132	1"	25mm brass			



• **mazak towel rail bracket (centre)** •

code	size	finish	code	size	finish
19161	3/4"	19mm chrome	19166	3/4"	19mm white
19171	1"	25mm chrome	19176	1"	25mm white
19162	3/4"	19mm brass			
19172	1"	25mm brass			



• **mazak diecast bracket (end)** •

code	size	finish	code	size	finish
19011	5/8"	16mm chrome	19022	3/4"	19mm brass
19021	3/4"	19mm chrome	19032	1"	25mm brass
19031	1"	25mm chrome	19026	3/4"	19mm white
19012	5/8"	16mm brass	19036	1"	25mm white



• **mazak diecast bracket (centre)** •

code	size	finish	code	size	finish
19051	5/8"	16mm chrome	19062	3/4"	19mm brass
19061	3/4"	19mm chrome	19072	1"	25mm brass
19071	1"	25mm chrome	19066	3/4"	19mm white
19052	5/8"	16mm brass	19076	1"	25mm white



• **brass concealed fixing sockets*** •

code	size	finish	code	size	finish
18231	1"	25mm chrome	18232	1"	25mm polished brass
18251	1 1/2"	38mm chrome	18252	1 1/2"	38mm polished brass
18261	2"	51mm chrome	18264	2"	51mm polished brass



• **stainless concealed fixing sockets** •

code	size	finish	code	size	finish
18265	2"	51mm polished	18269	2"	51mm satin