

brio.com.au



Brio® where ideas unfold

Brio® Timberoll 100/200

Exterior bottom roller sliding door hardware for panels up to 200kg

About us

Brio® where ideas unfold

Brio®, with a head office in Australia and a subsidiary in the UK, is focused on bringing adventurous architectural ideas to life, converting the conceptual thoughts of our customers into exciting reality.

Our aim is to be the innovative leader in sliding and folding door hardware solutions - a leader in design and quality.

Brio® epitomises our core values. Energy. Spirit. Vitality. It also stands for the way we approach the discovery of new solutions for our customers.

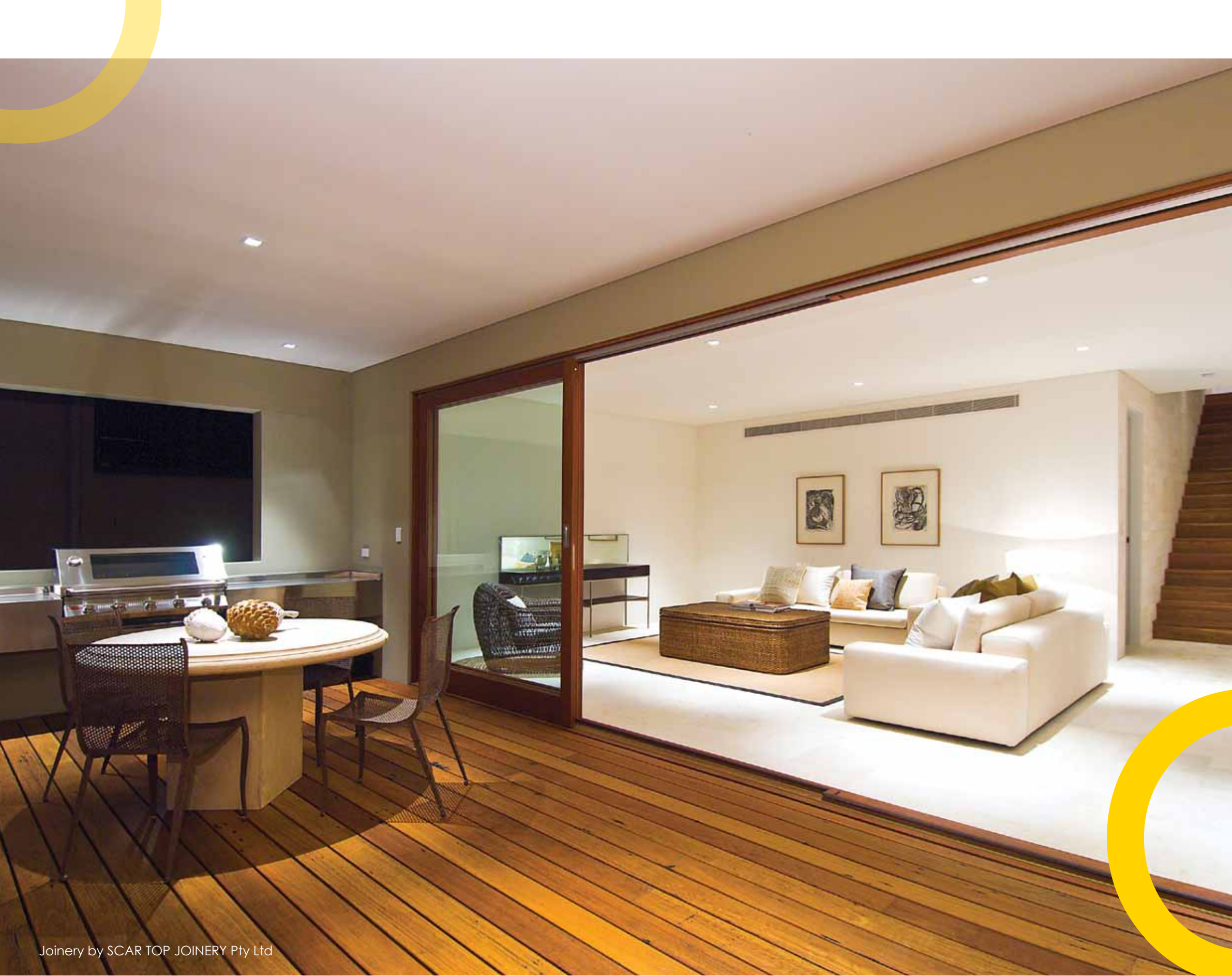
Brio®'s R&D department brings a strong design element to the business, developing and testing new concepts using the latest CAD and modelling software.

The company embraces the concept of generic and private label enterprises and recognises the need for specialisation in certain circumstances and markets.

Brio® has a commitment to the continuous improvement of quality, and is certified to Quality Management System AS/NZS ISO 9001: 2008.

Brio® is a division of RMD Industries® Australia





Joinery by SCAR TOP JOINERY Pty Ltd

Timberroll 100/200

Timberroll 200

Exterior Bottom Roller Sliding Door
Hardware for panels up to 200kg

Large timber framed sliding panels expand the possibilities of unimpeded passage or panoramic views whilst optimising space or greater indoor-outdoor flow. The bottom roller design is suited to such larger architectural features where the supporting structure or lintel is insufficient for the weight of the door panel or where headroom is limited.

Application

Brio® Timberroll 200 is an external bottom rolling sliding window and door hardware system for maximum panel weights of up to 200 kilograms. Timberroll 200 is ideally suited for large patio doors with timber-framed glazed panels of up to 3.0 metres high and 3.0 metres wide. Timberroll 200 can be used in both residential and commercial applications where any number of doors can be used on single or multiple lines of rail that can slide to one or both sides of the opening.

Adjustment

Brio® Timberroll 200 system slides on two self levelling double bogie rollers rebated into the base of each door panel. The full stainless steel construction of the 913DBA double bogie roller and precision stainless steel bearings offers superior rolling performance making Timberroll 200 ideal for coastal applications. The design features a side adjustment screw located at a convenient height to accommodate 23mm stops used on timber joinery for easy of access. The rollers are designed to run on the 914B Bronze and 918 Brass bottom rails.

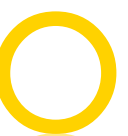
Guide options

Brio® offers a number of top guide options for securing the top of the door panel in place to suit a variety of environments and wind load conditions.

The architectural details section of this brochure showcases three solutions.

Specifications

Max door panel weight: 200kg
Max door panel height: 3000mm
Max door panel width: 3000mm
Min door thickness: 40mm
Application: Exterior sliding doors





Joinery by SCAR TOP JOINERY Pty Ltd

Timberoll 100/200

Timberoll 100

Exterior Bottom Roller Sliding Door and Window Hardware for panels up to 100kg

Application

Brio® Timberoll 100 has been specifically designed for lighter external sliding window and doors in mind with a maximum panel weight of up to 100 kilograms. Timberoll 100 is ideally suited for timber framed glazed sliding panels up to 2.4metre high and 1.8metres wide and can be used in both residential and light commercial applications.

At the heart of the Timberoll 100 system are two 913DBA-N self levelling double bogie rollers with reinforced Acetyl Nylon outer tyres and precision bearings for quiet, smooth operation. Each 913DBA-N roller has height adjustment of 6.5mm via a screw mechanism located at a convenient height to accommodate 23mm rebate stops used on timber joinery for ease of access.

The rollers are designed to run on the 914A Aluminium bottom rail and with a number of top guide options available. Timberoll 100 offers an economic quiet solution for sliding timber window and doors.

Specifications

Max door panel weight: 100kg
Max door panel height: 2400mm
Max door panel width: 1800mm
Min door thickness: 40mm
Application: Exterior sliding windows and doors

Security

Timberoll comes complete with a unique interlocking device that serves multiple purposes. The 924 Interlocker and fin seal provides a tight weather seal solution between the sliding and fixed panel. For multiple panel applications the 924 Interlocker acts to collect and close panels providing weather sealing between each panel. The interlocker also provides a level of security, once engaged the panels collected are unable to move away from their intended line of operation.

The purpose-designed 6400 Sliding Mortice Claw Lock is available for securing the panel closing against the jamb or butting against another door in a by-parting door application. The 6400 Sliding Mortice Claw Lock is available in door kits complete with cylinder, cylinder escutcheons and 401 flush pulls. For multiple panel applications 456 flush bolts can be used to secure these panels.

814 Rail with 108/814 Spring load guide



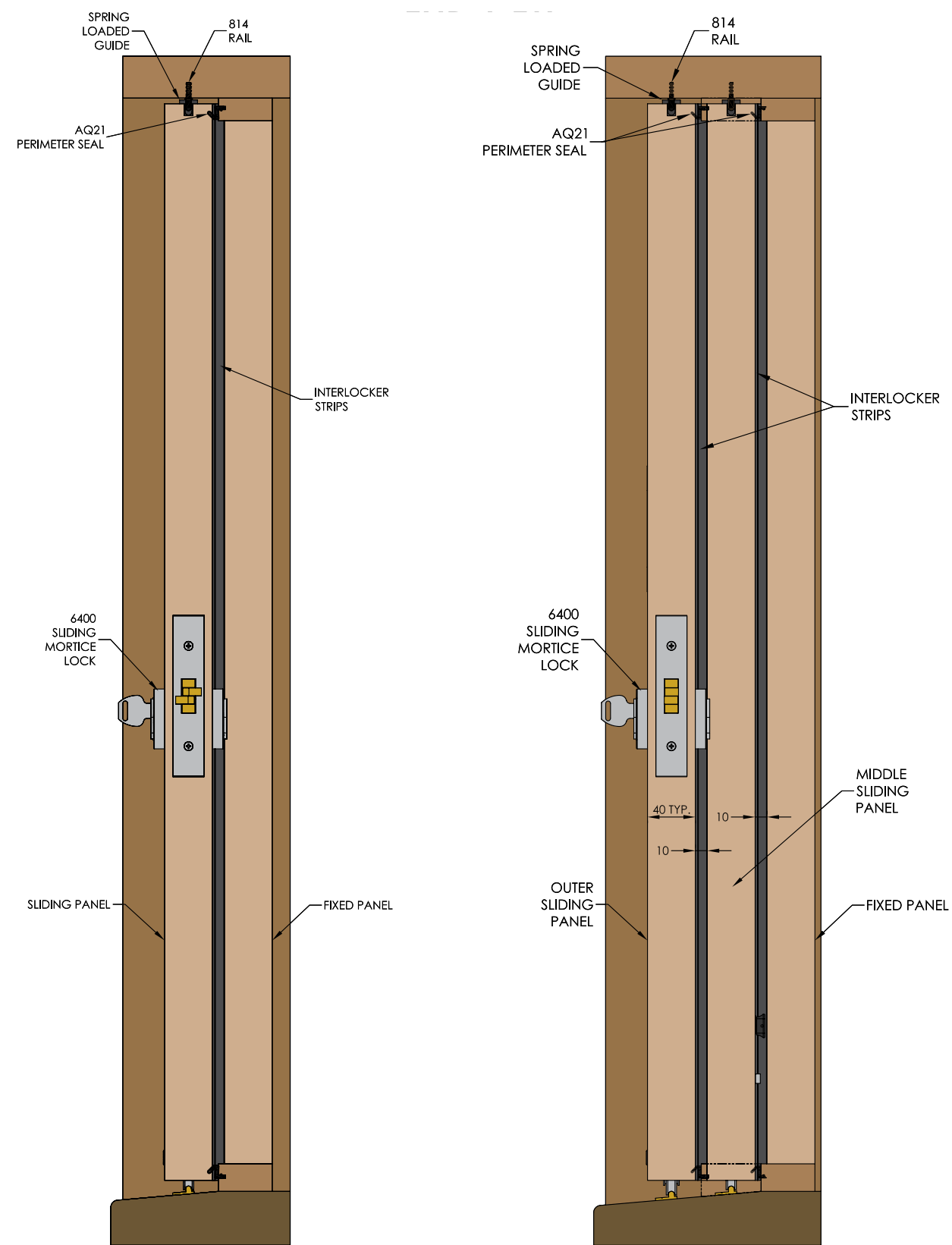
814 Rail with 108/814 Spring load guide



Architectural Details

End View

814 Rail with 108N/814 Spring load guides



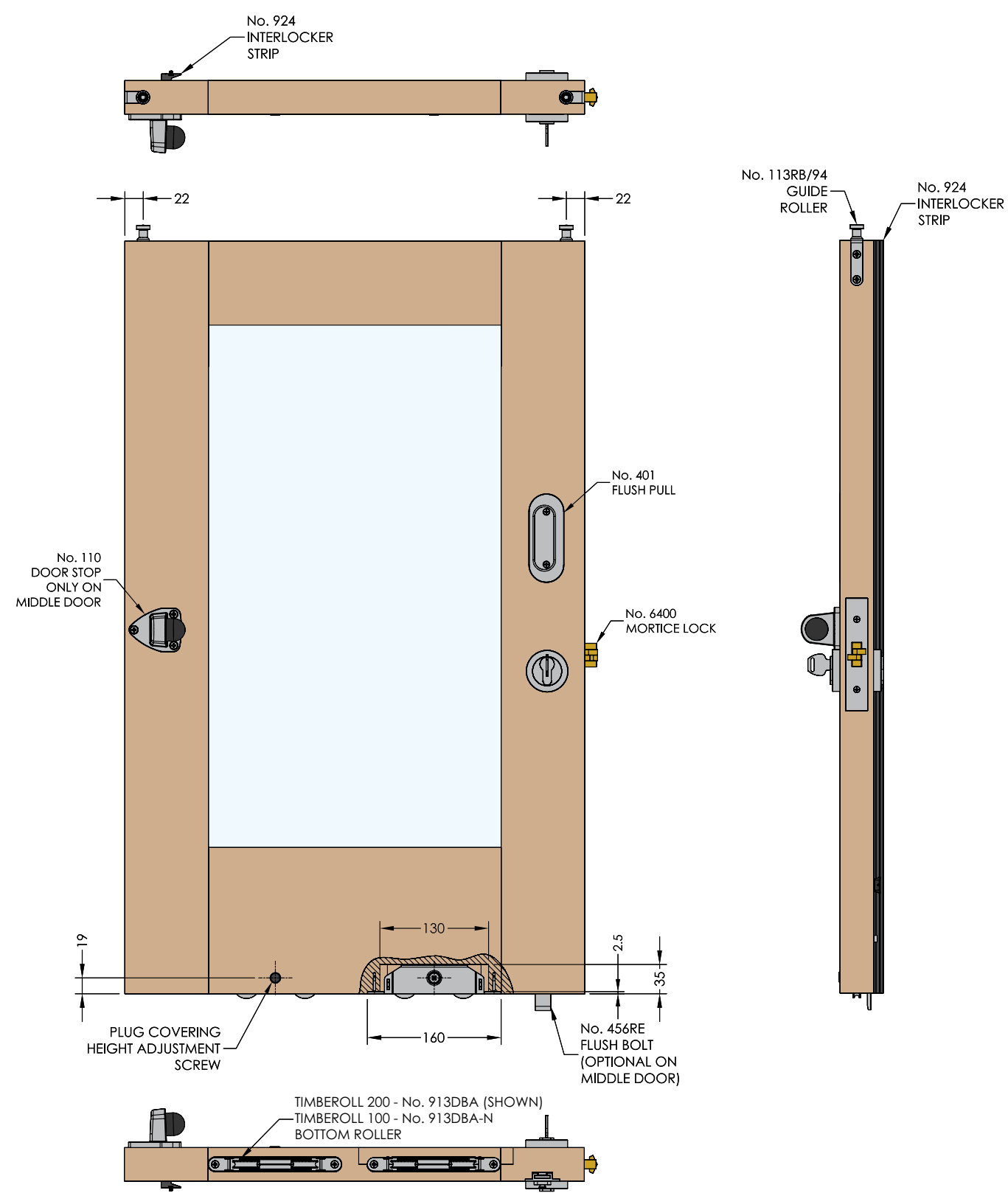
ONE FIXED PANEL & ONE SLIDING PANEL

ONE FIXED PANEL & TWO SLIDING PANELS

Architectural Details

Hardware Layout

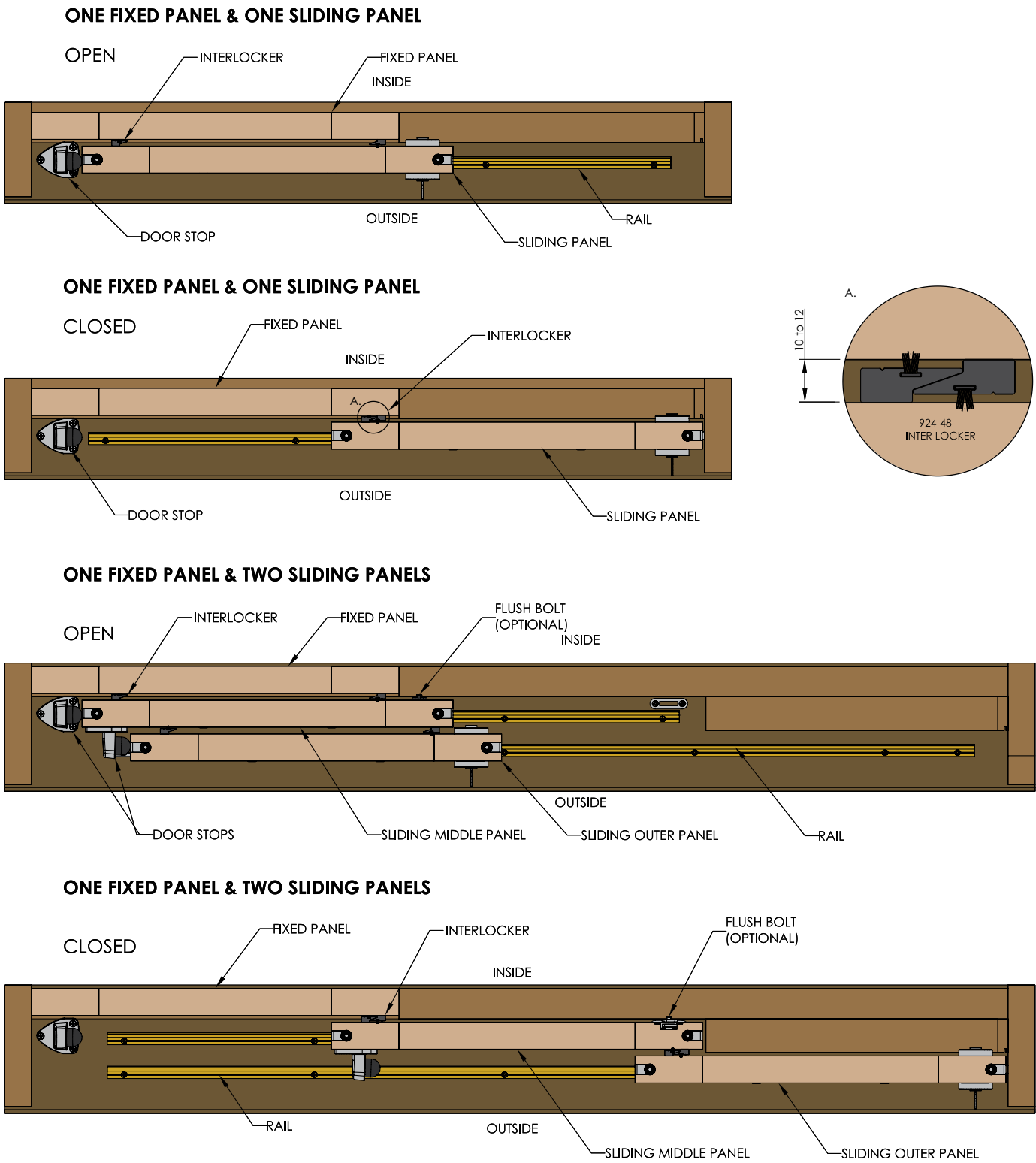
94PPA Inverted channel with 113RB/94 guides



Architectural Details

Top View

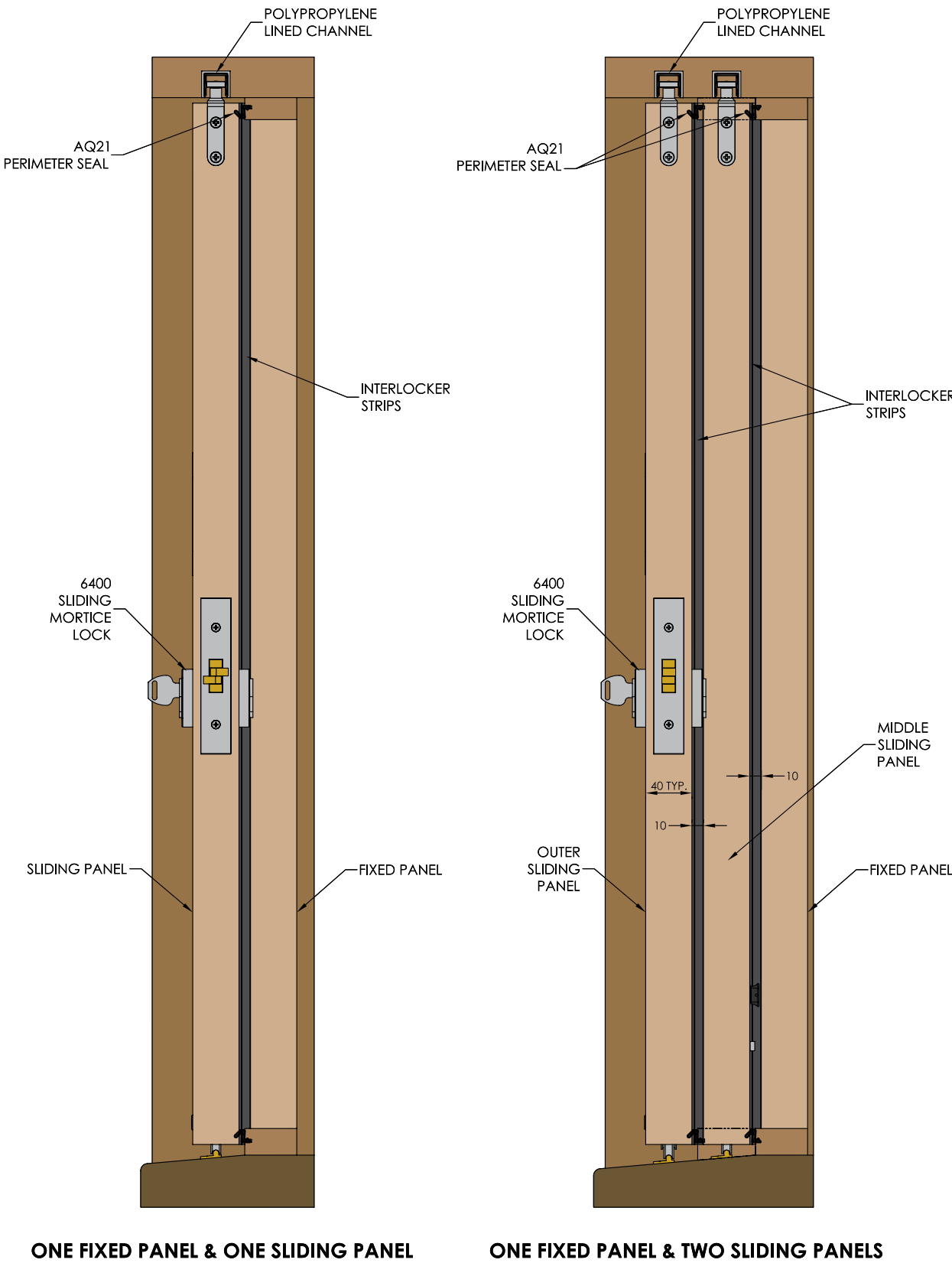
94PPA Inverted channel with 113RB/94 guides



Architectural Details

End View

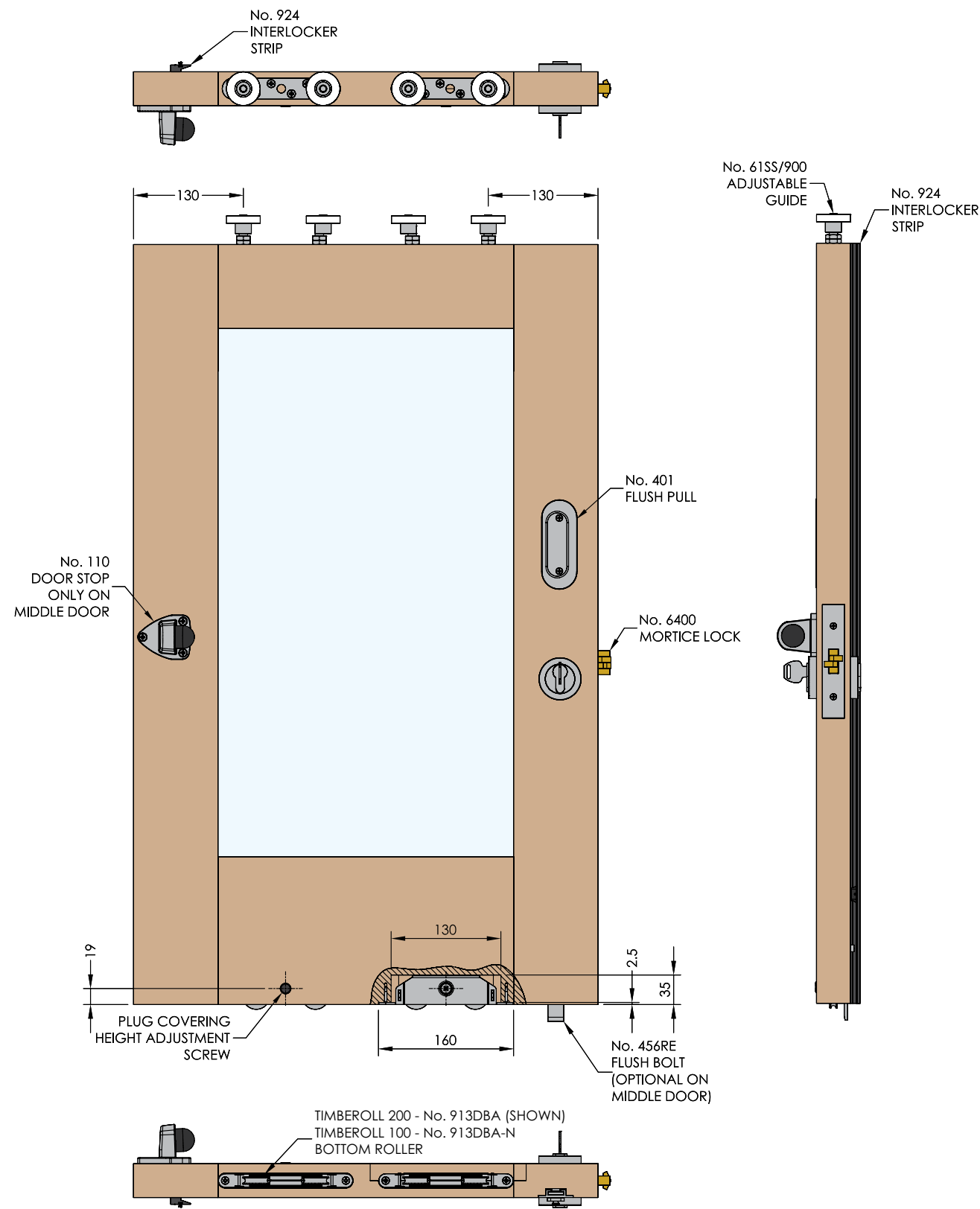
94PPA Inverted channel with 113RB/94 guides



Architectural Details

Hardware Layout

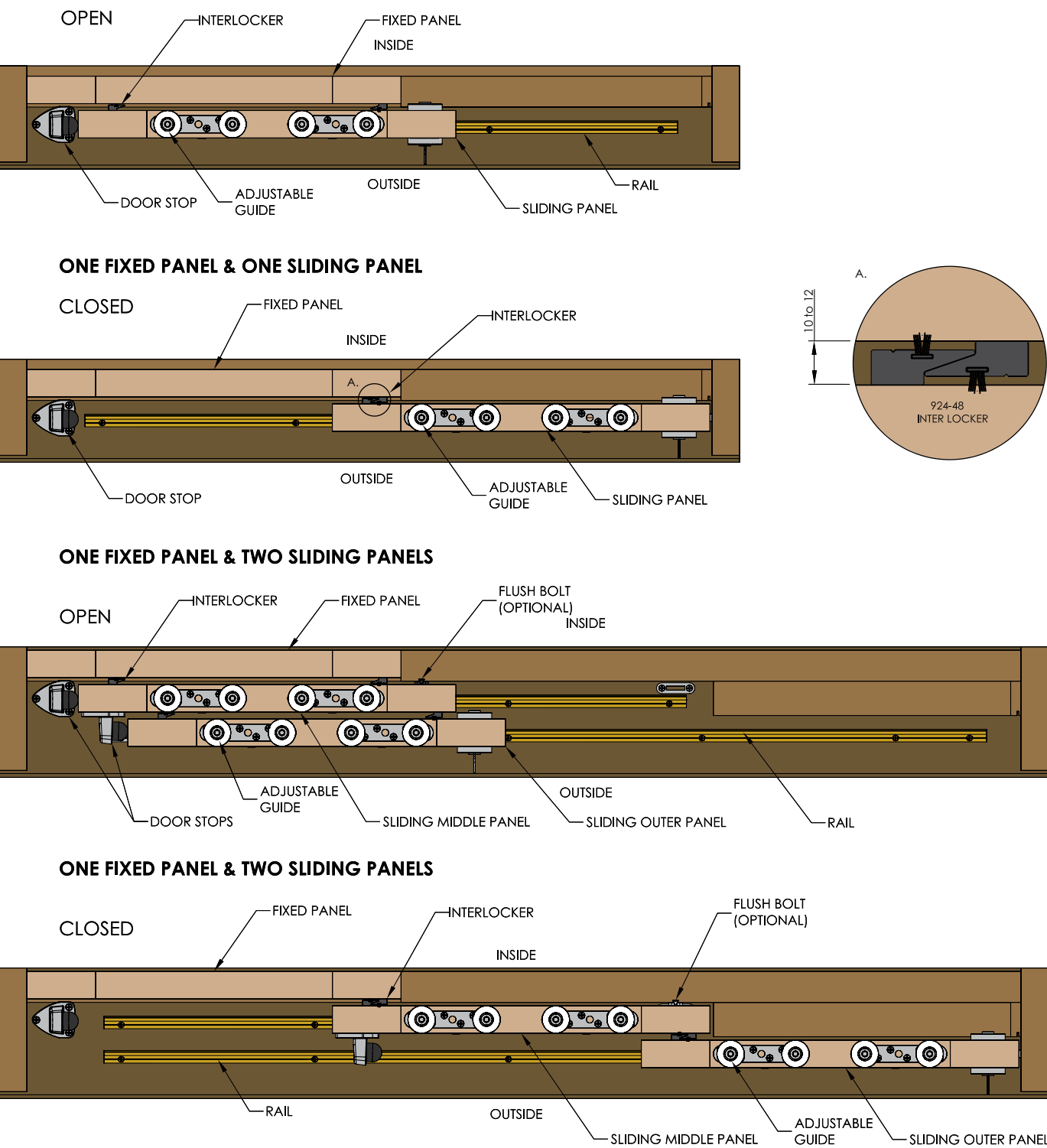
900 Top Guide Channel with 61SS/900 guides



Architectural Details

Top View

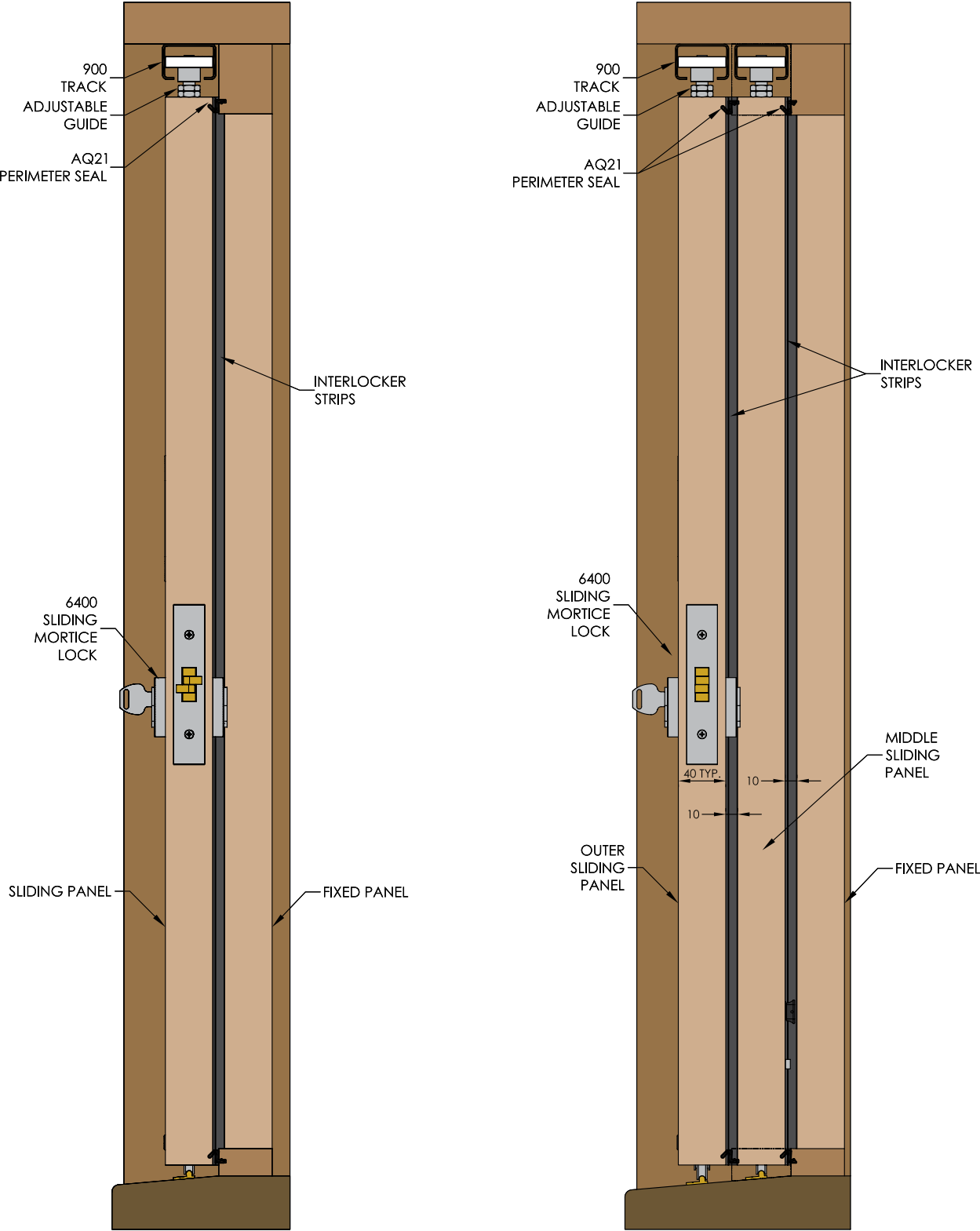
900 Top Guide Channel with 61SS/900 guides



Architectural Details

End View

900 Top Guide Channel with 61SS/900 guides



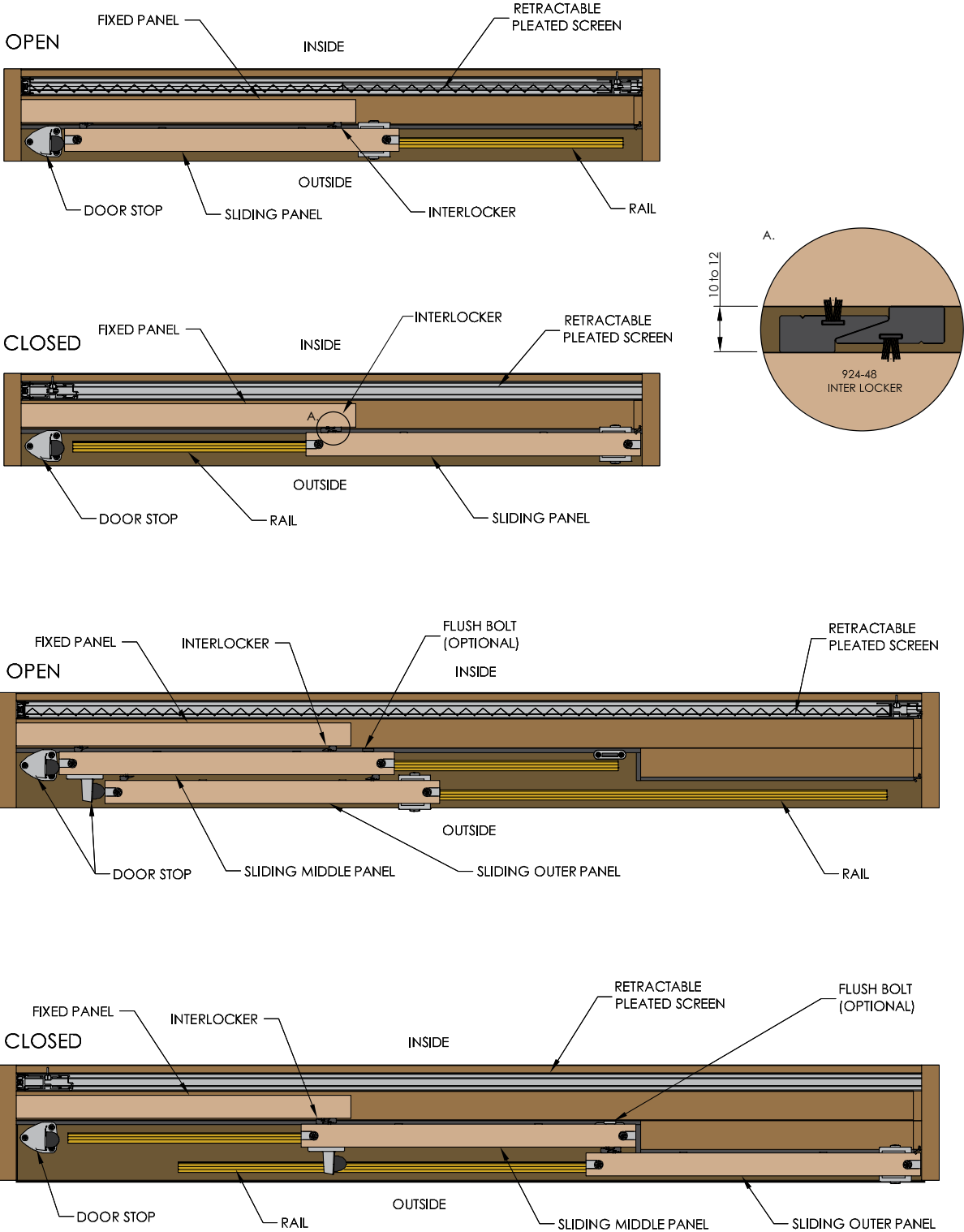
ONE FIXED PANEL & ONE SLIDING PANEL

ONE FIXED PANEL & TWO SLIDING PANELS

Architectural Details

Top View

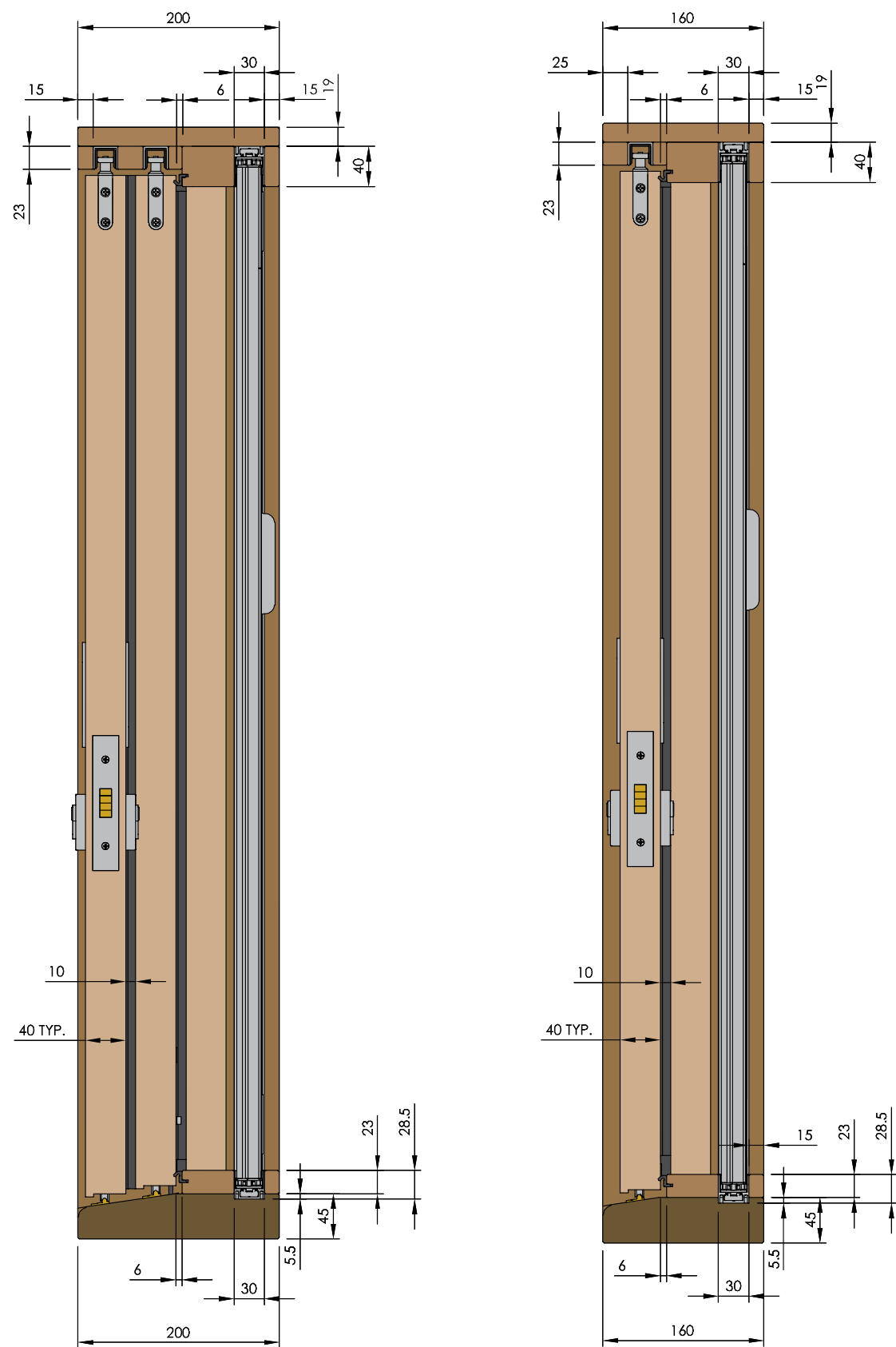
Brio® 612 Retractable Pleated Screen fitted across the opening



Architectural Details

End View

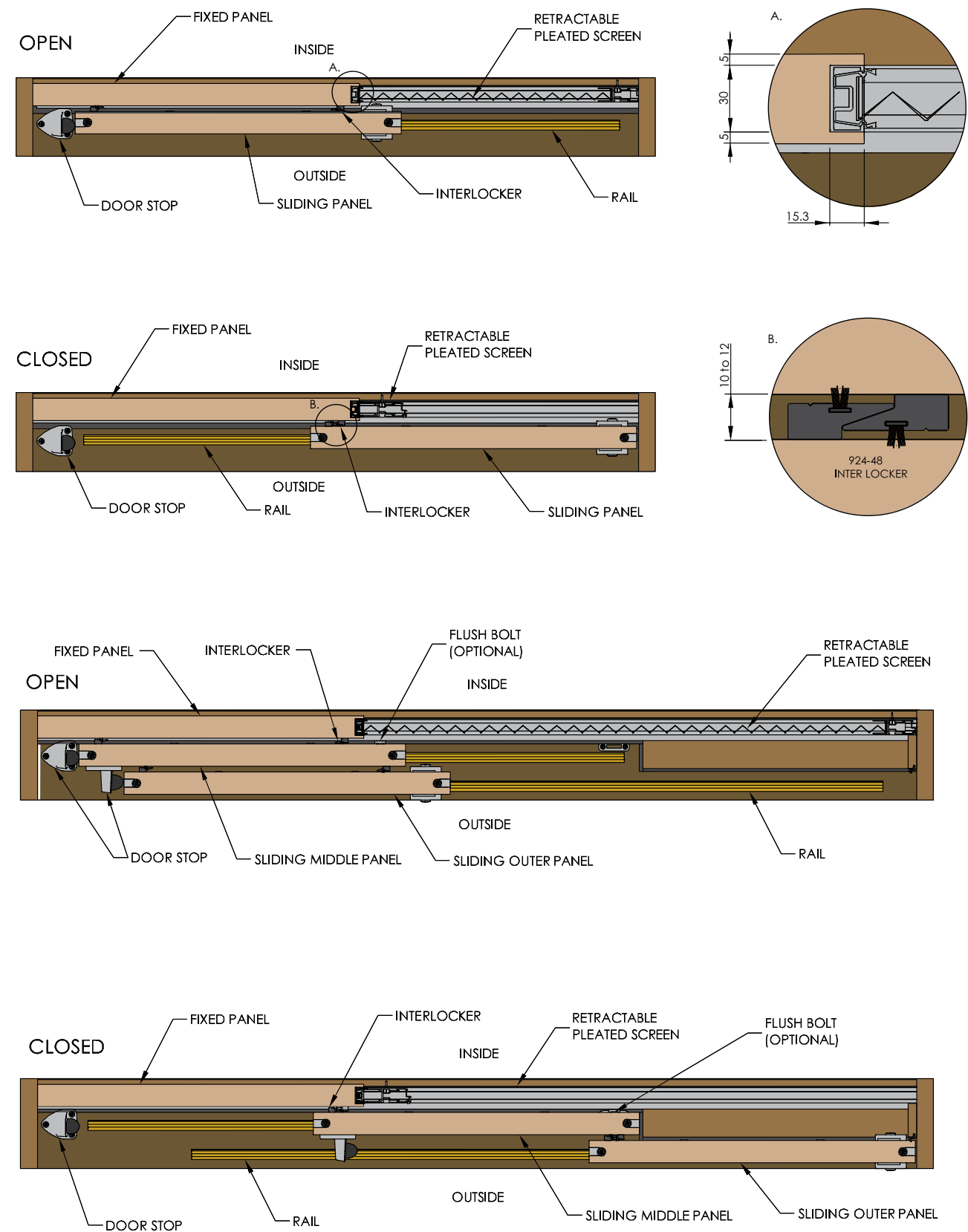
Brio® 612 Retractable Pleated Screen fitted across the opening



Architectural Details

Top View

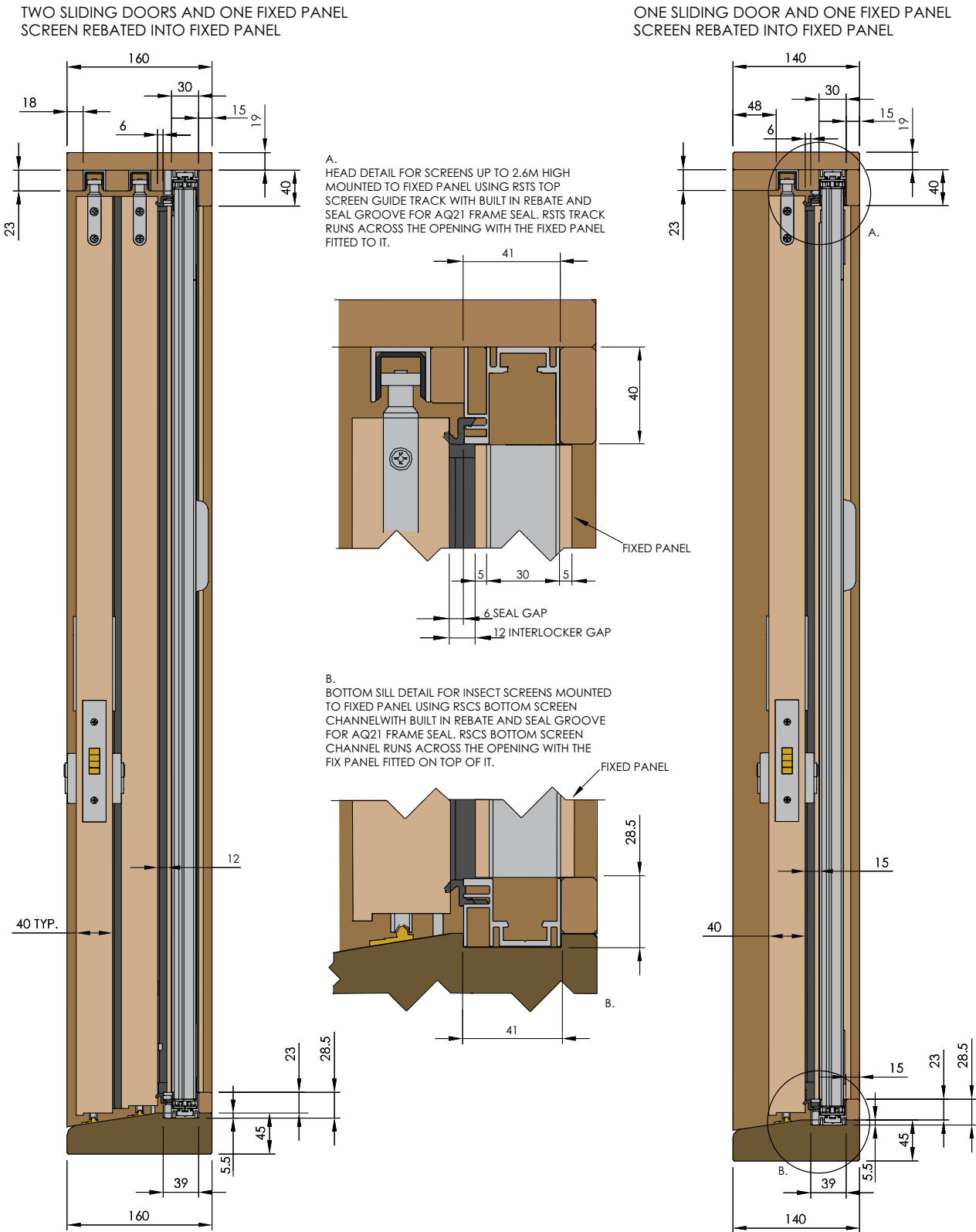
Brio® 612 Retractable Pleated Screen rebated into fixed panel



Architectural Details

End View

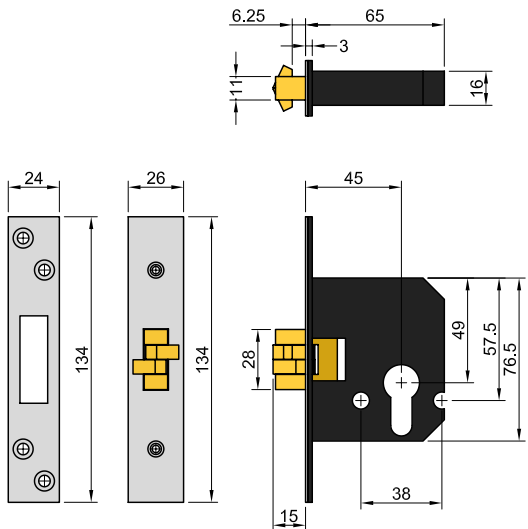
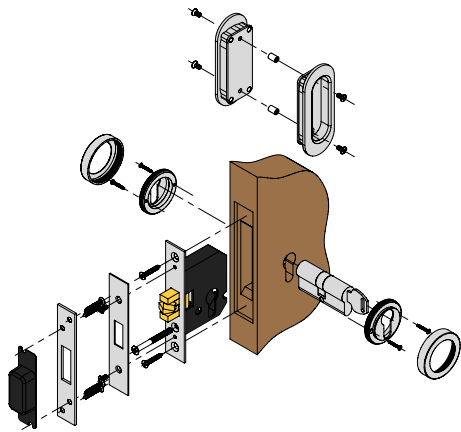
Brio® 612 Retractable Pleated Screen rebated into fixed panel



Sliding Mortice Lock

6400 Series

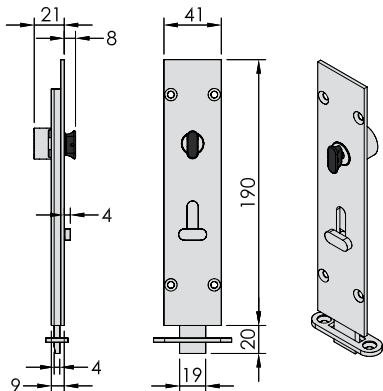
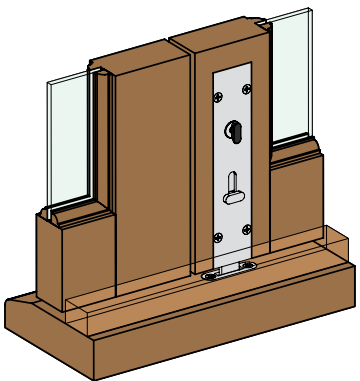
Locking Solutions for Straight Sliding Doors



Architectural Details

456 and 456E Flush Bolts

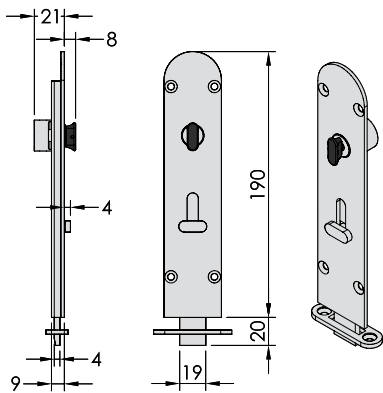
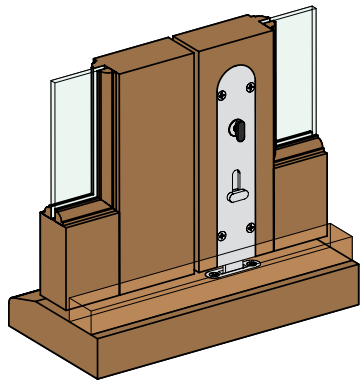
Locking Solutions for Straight Sliding Doors



Architectural Details

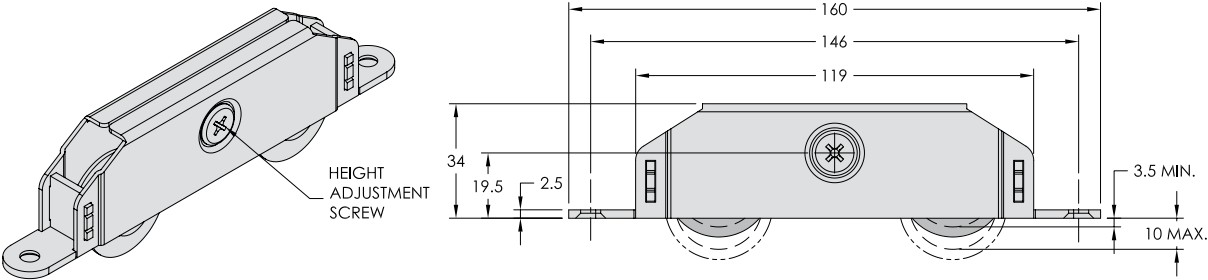
456R and 456RE Flush Bolts

Locking Solutions for Straight Sliding Doors

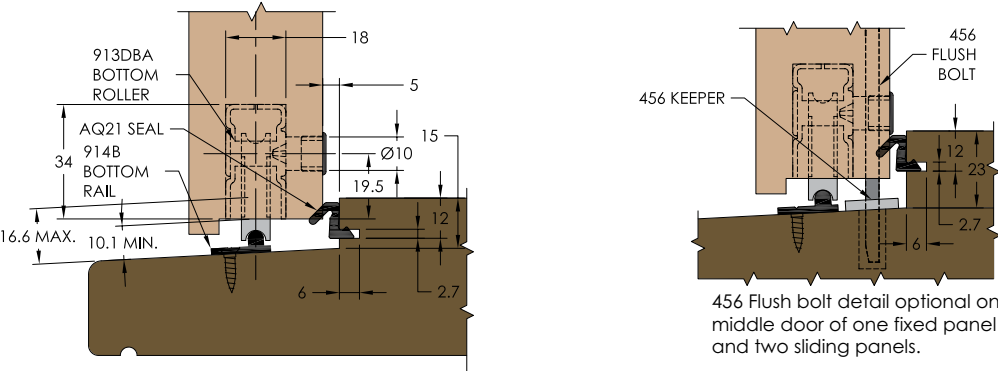


Architectural Details

913 DBA Bottom Roller

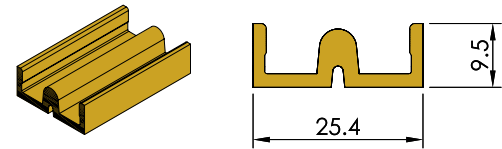


Installation Details



Accessories

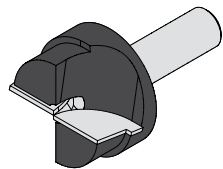
Alternative Bottom Rail - 918 Brass



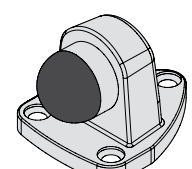
924 Interlocker



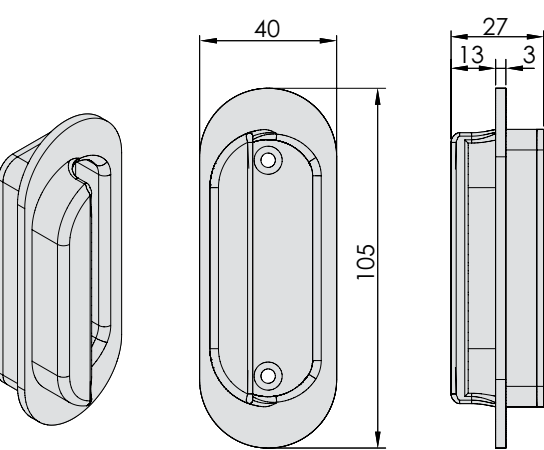
401R Router



110 Door Stop



401D Flush Pull with Raised Finger Grip



Timberoll 100/200

Specifications

| Door Specification | Timberoll 100 | Timberoll 200 |
|----------------------------------|--|---|
| Max panel weight | 100kg | 200kg |
| Max panel height | 2400mm | 3000mm |
| Max panel width | 1800mm | 3000mm |
| Min door thickness | 40mm | 40mm |
| Hardware Specification | | |
| Top Guide Channel: | | |
| 900A | Recommended for heavy duty applications | |
| 94PPA | Inverted recommended for medium duty applications. | |
| 96TA | Recommended for light duty applications. Not recommended in situations where the door is likely to warp since the door could bind on the tee. | |
| Material | Aluminium 25 microns clear anodised. | |
| Standard Lengths | 2000mm, 3000mm, 4000mm and 6000mm. | |
| Top Guides (2 per Door) | | |
| 61SS/900 | Stainless steel angle plate fitting with double nylon rollers one adjustable laterally to prevent rattle. | |
| 113RB/94 | Cast 316 stainless steel corner bracket with precision stainless steel bearing. | |
| 106RB/94 | Cast 316 stainless steel bracket with precision stainless steel bearing. | |
| Bottom Roller | | |
| 913DBA | | Full stainless steel construction, precision stainless bearings & tyres |
| 913DBA-N | Plated steel construction, precision bearings nylon tyres | |
| Interlocker & Seal | | |
| 924 | The 924 Interlocker is available in 4.8mm lengths, comes with fin seal, drilled and countersunk. Aluminium 25 microns in Black, Clear and Bronze anodised. | |
| Bottom Rail | | |
| 914A | Aluminium rail, available in 2000mm, 3000mm, 4000mm and 6000mm lengths. | |
| 914B | Bronze rail designed to allow room for flush bolt keepers, available in 2000mm, 3000mm, 4000mm and 6000mm drilled and countersunk. | |
| 918 | Brass rail designed to be recessed into the timber sill available in 2000mm, 3000mm, 4000mm and 6000mm drilled and countersunk. | |
| Security | | |
| 6400 Sliding Mortice Lock Series | Purpose designed sliding door lock available in convenient door kits. Kits comprise of one lock case, face plate, strike plate, strike box, two cylinder escutcheons, either single cylinder & turn or double cylinder and two 401 flush pulls. Available in Stainless Steel (SS), PVD Brass (PVDB) and Polished Stainless (PS) | |
| 456 Flush bolts | Locking, non-locking, square top and round top flush bolts are available for mulitpanel applications. Available in SN, PVDB and PN. | |
| Accessories | | |
| 110 | Door stop wall or floor mount available in Satin Chrome Plate and Polished Brass. | |
| 401 | Flush Pulls, cast stainless construction available in SS, PVDB and PS. 401 plunge router also available. | |
| 401D | Flush Pulls with raised finger pull, cast stainless construction available in SS, PVDB and PS. 401 plunge router also available. | |
| Warranty | 10 Years | |

Brio®

Brio RMD (UK) Ltd

Unit 30 Gateway West, Kingfisher Boulevard, Newburn Riverside,
Newcastle Upon Tyne, NE15 8NZ, United Kingdom

Phone +44 (0) 191 2291224 Fax +44 (0) 191 2677891

www.briouk.com

Brio RMD (UK) Limited trading as Brio®, is a division of the Brio® Group, a subsidiary of RMD Industries®

Brio® – Australia

PO Box 140, Regents Park NSW 2143
C5 - C7, Regents Park Estate, 391 Park Road,
Regents Park, NSW 2143, Australia.

Phone +61 2 8718 6718 Fax+61 2 8718 6719

www.brio.com.au

Brio® is a division of RMD Industries Pty Ltd ABN 31 004 313 937