

brio.com.au



Brio® where ideas unfold

Brio® Single Run

Top hung straight sliding architectural systems
for panels up to 250kg

About us

Brio®, based in Australia, is focused on bringing adventurous architectural ideas to life, converting the conceptual thoughts of our customers into exciting reality.

Our aim is that Brio® be seen as the innovative leader in sliding and folding door hardware – a leader in design and quality.

Brio® epitomises our core values. Energy. Spirit. Vitality. It also stands for the way we approach the discovery of new solutions for our customers.

Brio®'s R&D department brings a strong design element to the business, developing and testing new concepts using the latest CAD and modelling software.

The company embraces the concept of generic and private label enterprises and recognises the need for specialisation in certain circumstances and markets.

Brio® has a commitment to the continuous improvement of quality, and is certified to Quality Management System AS/NZS ISO 9001 :2008.

Brio® is a division of RMD Industries®





Single Run 80

The Brio® Single Run 80 system is designed for interior and exterior sliding shutters and doors up to 80kg in weight for residential or light commercial applications. The system is suitable for single panels slid to one side or two panels bi-parting in a single run of track. Alternatively, panels can slide parallel to each other to suit almost any configuration.

The compact structural aluminium 120 track can be top-fixed through the track or side-fixed using the Brio® stainless steel face-fixed mounting brackets for single or double track runs. The 120 track profile ensures the wheels cannot disengage and serves to reduce the risk of contamination as debris is less likely to accumulate on the raised rails.

Single Run 80 hanger's structural polymer construction, stainless steel fixing plates and hanger bolts ensures long life and high corrosion resistance. Our proven 4-wheel reinforced nylon outer tyre hanger technology, with a choice of chrome or stainless steel high-speed precision bearings, is standard. This combined with the unique 120 track profile, offers years of silent smooth operation and superior rolling performance.

The hanger and fixing plate allow simple height adjustment by tightening or loosening the hanger bolt. The hanger plate also features two anti-slip tabs to prevent the door from disengaging from the hanger bolt.

The 120 track is available in either mill or 25 micron clear anodised aluminium for improved corrosion performance. A comprehensive range of bottom channels and guides are available to suit a wide range of applications.

Max door panel weight: 80kg

Max door panel height: 3000mm

Max door panel width: 1500mm

Min door thickness: 19mm

Application: Interior and exterior sliding timber or aluminium shutters and doors

Single Run 80





Single Run 100 Zero Clearance

Floor to ceiling sliding doors are becoming increasingly popular in residential homes, commercial offices and retail fit-outs creating flexible office and living spaces. The striking appearance achieved with floor to ceiling doors presents its own unique challenges when it comes to sliding door hardware. Modern minimalist – clean lines demand unobtrusive hardware that is concealed out of view.

Brio® Single Run 100 was designed to achieve clearances of 3mm between the track and top of the door. With no hanger plates or screws protruding above the top edge of the door, the door can be adjusted to achieve a minimal “zero clearance” look.

In addition to the Brio® comprehensive range of bottom channels and guides, the new spring loaded guide and bottom rail combination can be easily concealed within the bottom edge of the door extending the zero clearance look to the floor.

The new clip stop with adjustable retention force holds the panel in place and completes the system.

Max door panel weight: 100kg
Max door panel height: 3000mm
Max door panel width: 1500mm
Min door thickness: 40mm
Application: Interior and exterior sliding timber doors in residential or light commercial applications.

Single Run 100





Single Run 120

The Brio® Single Run 120 system is designed for interior and exterior sliding shutters and doors up to 120kg in residential or light commercial applications. It uses our proven 4-wheel reinforced nylon outer tyre hanger technology with either chrome or stainless steel high-speed precision bearings for those more exposed applications. The 120 series' cast stainless steel hangers make it a durable solution for high traffic applications with impressive corrosion resistance.

There are seven dedicated hangers to suit a wide range of applications and door construction, such as timber, aluminium and MDF. Each hanger has been designed for simple installation and ease of adjustment.

The track can be soffit-fixed through the track, or side-fixed using Brio® stainless steel face-fixed mounting brackets for single or double track runs.

The system is suitable for a single panel slid to one side, or two panels bi-parting in a single run of track. A comprehensive range of bottom channels and guides are available to suit a wide range of applications.

Max door panel weight: 120kg
Max door panel height: 3000mm
Max door panel width: 1500mm
Min door panel thickness: 19mm
Application: Interior and exterior sliding timber or aluminium shutters and doors

Single Run 120





Single Run 180



Single Run 250

Single Run 180

The Brio® Single Run 180 is arguably the most versatile of all the Brio® straight sliding systems. The 180kg panel capacity can accommodate large panels, for example, an aluminium framed panel 2.5m x 2.5m with 10mm thick glass can slide on a single track or parallel to another. Single Run 180 is suited to both internal and external residential, commercial and light industrial applications.

As with all the straight sliding architectural systems the preferred choice of material is stainless steel. Cast marine grade 316 stainless steel is used in the hanger body to minimise joints and screws for the ultimate in strength. Only with cast technology is it possible to form complex shapes and introduce safety features such as anti-slip. Should a locking nut become loose using Brio® hardware the panel cannot simply slide off it's hanger.

Stainless steel comes as standard for all Brio® Single Run Architectural Systems. The only optional upgrade are the bearings. There is a choice of chrome steel bearings or full stainless steel for those more exposed applications.

The 180's versatility comes into play with hangers to suit heavy timber, aluminium and metal doors with options for corner, top fixing or bolting through angles and box sections. The track can be soffit-fixed through the track, or side-fixed using Brio® cast stainless steel face-fixed mounting brackets for single or double track runs.

The 180 track is available in either mill or 25 micron clear anodised aluminium for improved corrosion performance. A comprehensive range of bottom channels and guides are available to suit a wide range of applications.

Max door panel weight: 180kg
Max door panel height: 3000mm
Max door panel width: 2500mm
Min door panel thickness: 35mm
Application: Interior and exterior sliding timber, metal or aluminium shutters and doors

Single Run 250

The use of structural aluminium in a track with 3mm wall enables Brio® architectural systems to support panels weighing up to 250kg. Brio® Single Run 250 is ideally suited to large architectural openings in residential, commercial and industrial interior or exterior applications.

To accommodate these higher loads, the wheels used in straight sliding 250 increase in size. Like all Brio® Single Run Architectural Systems, the combination of precision bearings, nylon tyred wheels and our unique 250 track profile offers quiet finger-tip control.

Brio® straight sliding architectural systems are designed to be discrete. Square track is ideally shaped for recessing into the ceiling line. Two parallel track seal grooves locate bush seals that not only hide the hanger bolts and brackets, but also provide an element of sound retention. The track can be top-fixed through the track or side-fixed using Brio® stainless steel face-fixed mounting brackets for single or double track runs.

The 250 track is available in either mill or 25 micron clear anodised aluminium for improved corrosion performance. A comprehensive range of bottom channels and guides are available to suit a wide range of applications.

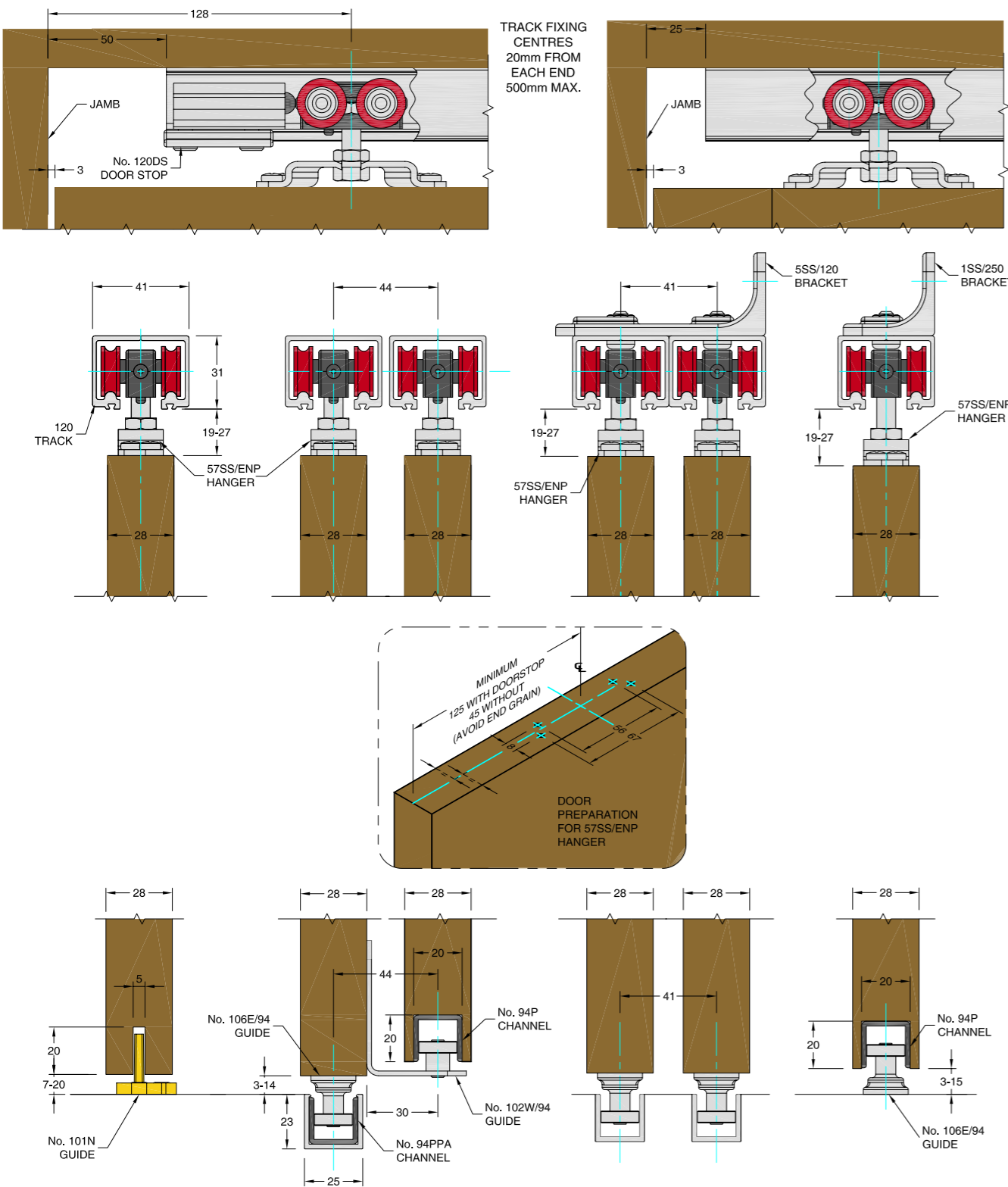
Max door panel weight: 250kg
Max door panel height: 3300mm
Max door panel width: 2500mm
Min door panel thickness: 35mm
Application: Interior and exterior sliding timber, metal or aluminium shutters and doors



Architectural Details

Single Run 80

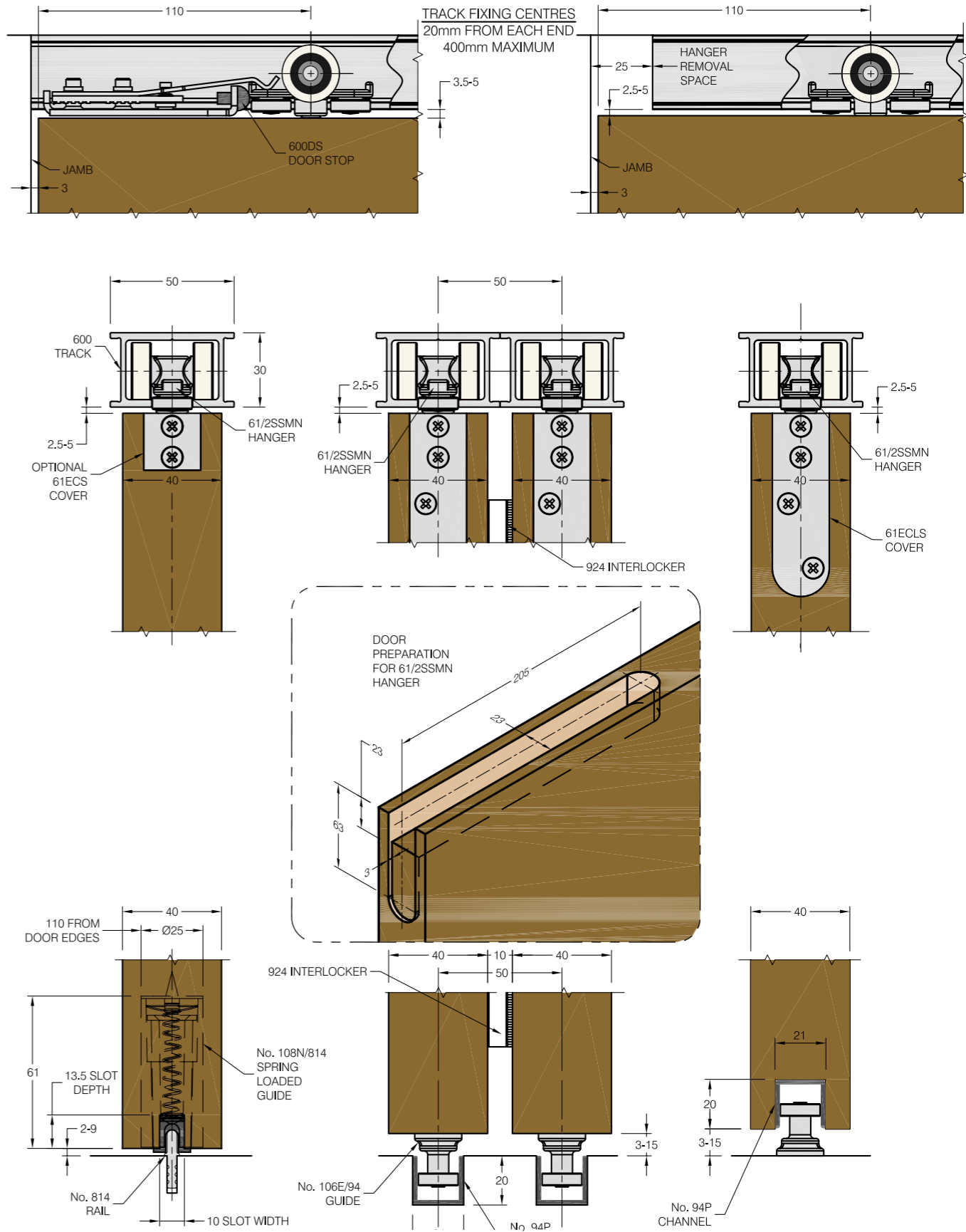
For top hung straight sliding doors, Max 80kg each



Architectural Details

Single Run 100 – Zero Clearance

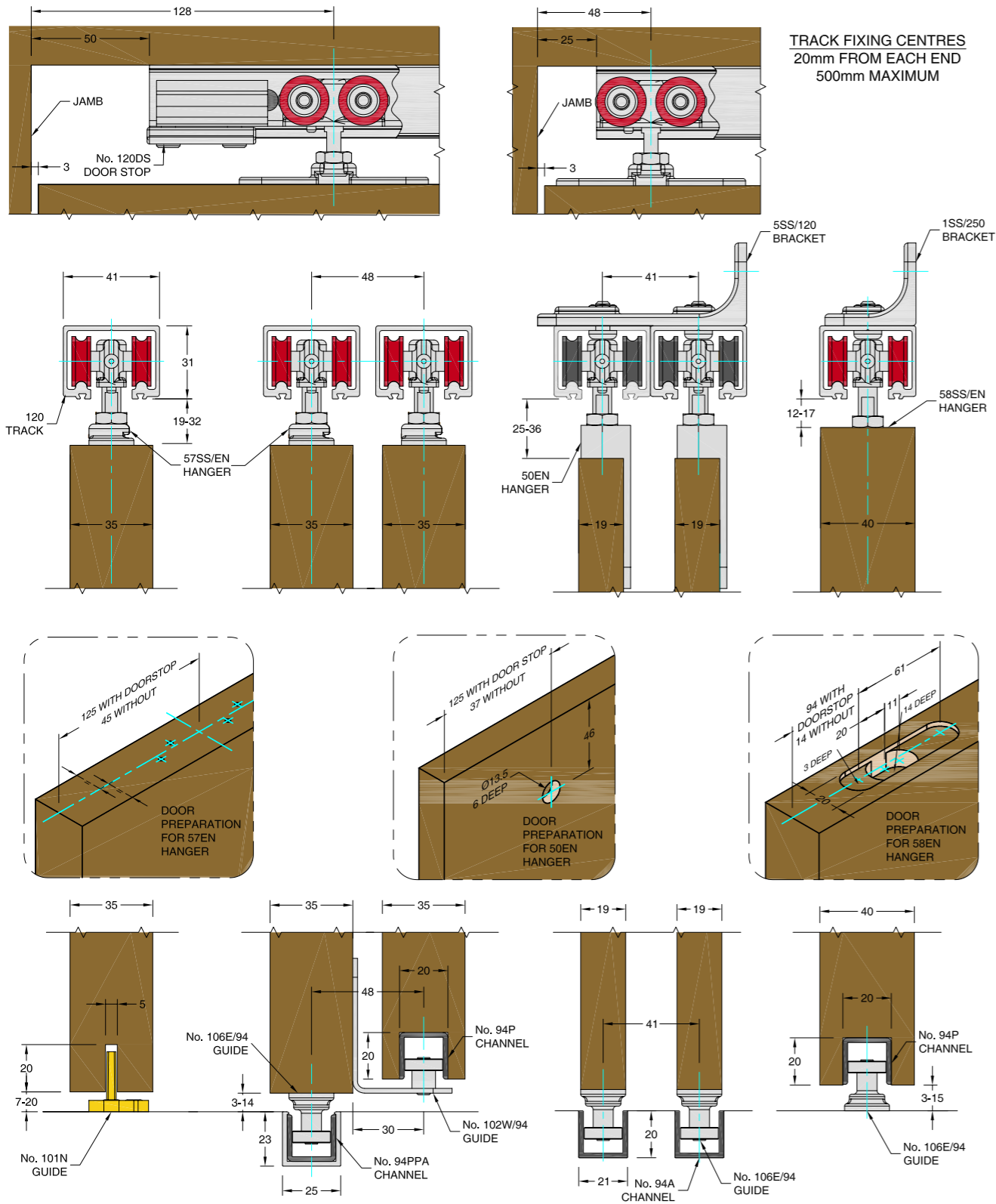
For top hung straight sliding doors, Max 100kg each



Architectural Details

Single Run 120

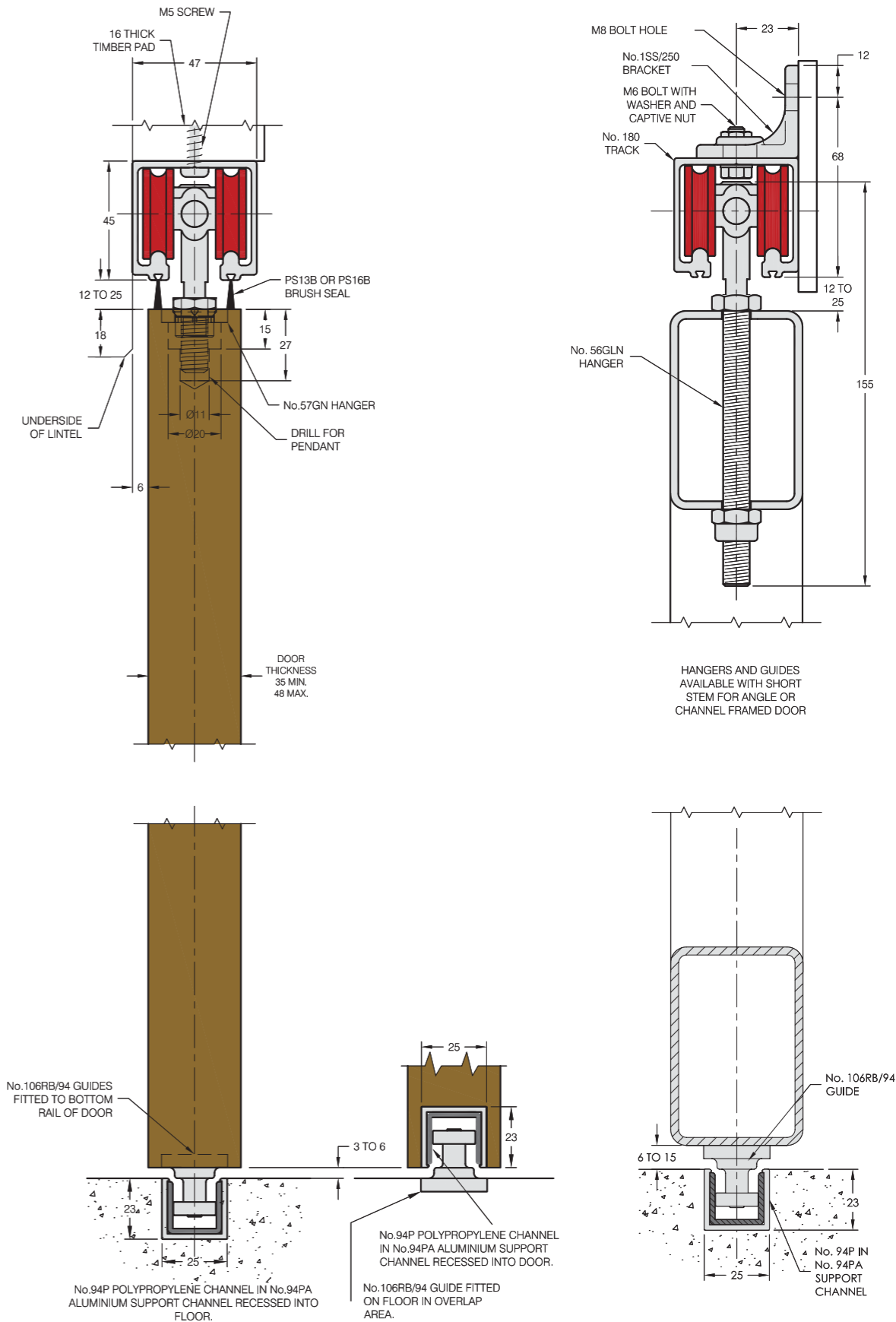
For top hung straight sliding doors, Max 120kg each



Architectural Details

Single Run 180

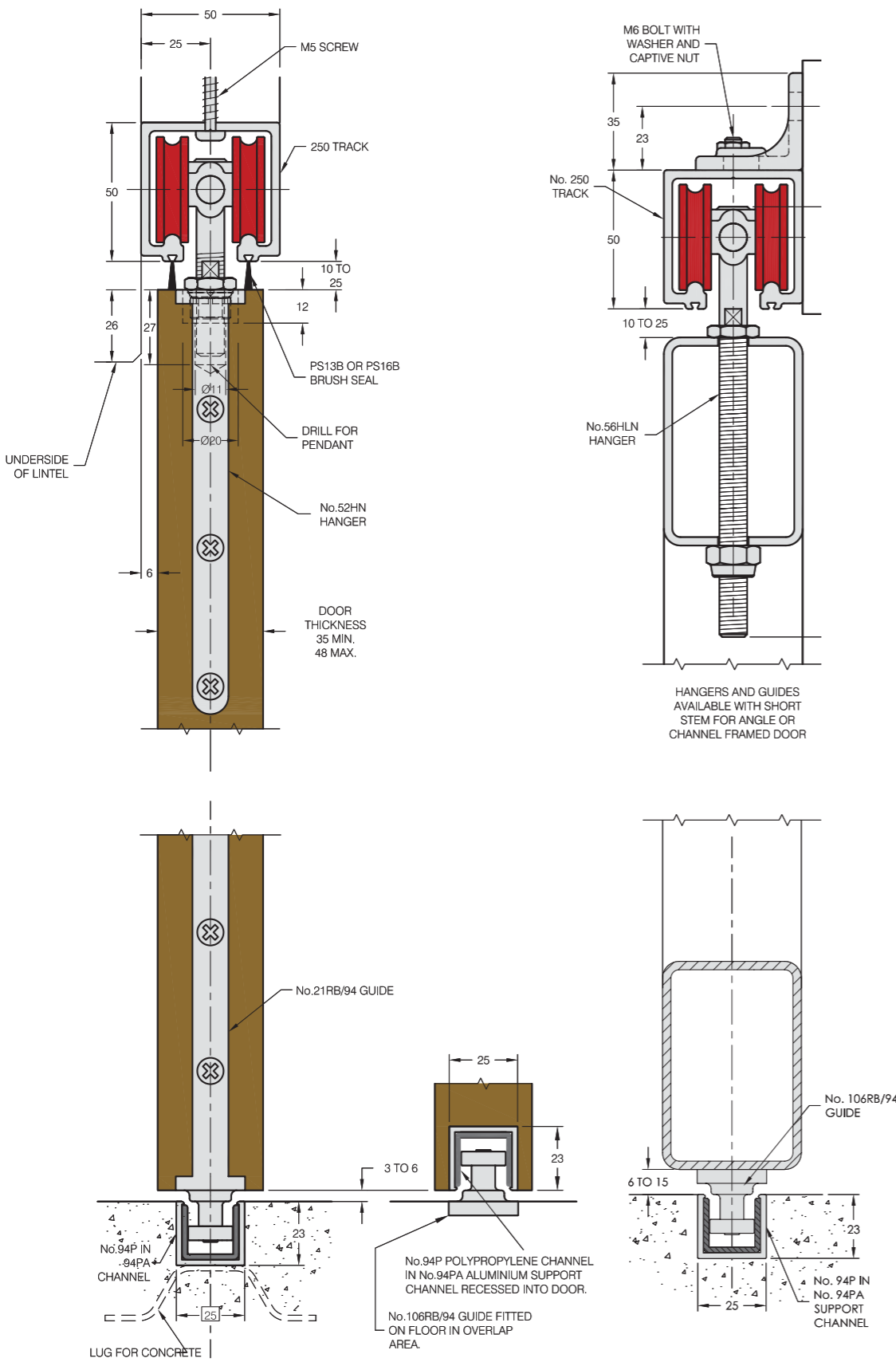
For top hung straight sliding doors, Max 180kg each



Architectural Details

Single Run 250

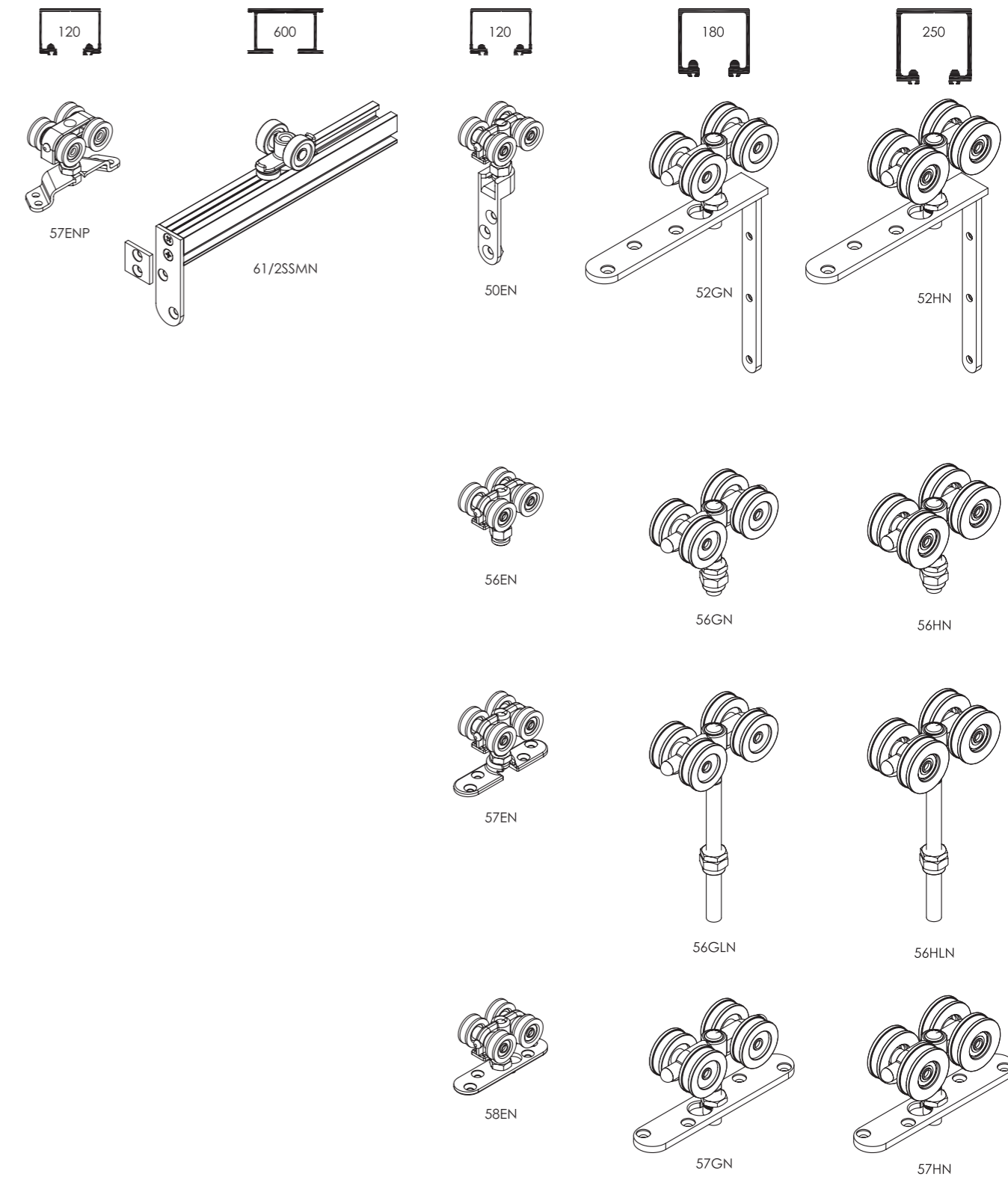
For top hung straight sliding doors, Max 250kg each



Architectural Details

Hangers

Single Run 80 Single Run 100 Single Run 120 Single Run 180 Single Run 250





Single Run Specifications

Architectural Systems

	80 Series		100 Series	120 Series		180 Series		250 Series	
Track:	120		600	120		180		250	
Material	Aluminium, mill or 25 microns clear anodised								
Standard Lengths	2000mm, 3000mm, 4000mm and 6000mm								
Brackets:									
Single Face Fitted Stainless, angle	1SS/250			1SS/250		1SS/250		1SS/250	
Double Face Fitted Stainless, angle	5SS/120			5SS/120		5SS/250		5SS/250	
Door Stop:									
Track mounted	120DS		600DS	120DS		180DS		180DS	
Hangers:	Chrome Bearings	Stainless Bearings	Stainless Bearings	Chrome Bearings	Stainless Bearings	Chrome Bearings	Stainless Bearings	Chrome Bearings	Stainless Bearings
For MDF Doors - face fitting				50EN					
For Timber Doors - plate (flush)			61/2SSMN	58EN	58SS/EN				
For Timber Doors - plate (surface)	57ENP	57SS/ENP		57EN	57SS/EN	57GN	57SS/GN	57HN	57SS/HN
For Timber Doors - angle fitting						52GN	52SS/GN	52HN	52SS/HN
For Metal Doors - angle frame				56EN	56SS/EN	56GN	56SS/GN	56HN	56SS/HN
For Metal Doors - box frame						56GLN	56SS/GLN	56HLN	56SS/HLN
For Metal Doors - plate fitting						57GN	57SS/GN	57HN	57SS/HN
Guides:									
Timber Doors - SS plate fitting	106E/94		106E/94	106E/94		106RB/94		106RB/94	
Timber Doors - nylon guide	101N		101N	101N					
Timber Doors - spring load guide	108N/814		108N/814						
Metal Doors - angle frame						106RB/94		106RB/94	
Metal Doors - box frame				106E/94		106RB/94		106RB/94	
Multiple Doors	102W/94		102W/94	102W/94		102W/94		102W/94	
Channel:									
Aluminium	94A		94A	94A		94A		94A	
Brass	94B		94B	94B		94B		94B	
Polypropylene	94P		94P	94P		94P		94P	
Aluminium Support for 94P	94PA		94PA	94PA		94PA		94PA	
Aluminium Rail for 108N/814	814A		814A	814A		814A		814A	
Standard Lengths	2000mm, 3000mm, 4000mm and 6000mm								
924 Interlocker	924		924	924		924		924	
Finishes	Clear Anodized (CA), Black Anodized (BLK), Bronze Anodised (BZ) Available in 4800mm length								

Brio®

Brio®

PO Box 140, Regents Park NSW 2143 C5, Regents Park Estate, 391 Park Road, Regents Park, NSW 2143
Phone +61 2 8718 6718 Fax +61 2 8718 6719

Victoria Queensland Western Australia South Australia Northern Territory Tasmania

Brio® is a registered trademark of RMD Industries® Pty Ltd ABN 31 004 313 937